



### 12 Silverstone Drive, Cowes FOR SALE



#### Immaculate Shoalhaven home -

This home has so much scope for the new owner as an investment, holiday home or permanent living.

Located in the Shoalhaven Estate, this large four-bedroom home offers multiple living zones and a fabulous undercover entertaining area, all this and just minutes away from Cowes shopping, dining and the beach.

The property boasts a king size master bedroom at the front of the property with double sliding doors opening into the king size master bedroom, walk-in robe and spacious ensuite with a double shower.

The well-appointed, spacious kitchen with walk-in pantry, huge entertainers island bench, 900mm electric cooktop and electric oven, dishwasher overlooks the dining and living area and opens out to an undercover alfresco area.

The large rumpus room overlooks the side undercover entertaining area with room for the BBQ and leading down to the spacious backyard which is beautifully landscaped and would appeal to anyone searching for a low maintenance property.

The further three-bedrooms are zoned away from the master suite, and have built-in robes, these share the large family bathroom and separate toilet.

A good sized laundry with plenty of storage space completes this delightful home.

Perfectly positioned, this fabulous home is a perfect investment for holiday or permanent living.

Other features include:

- Split system heating and cooling
- Linen storage
- Double lock-up garage with rear roller door access
- Situated on a 577sqm allotment

Disclaimer: All information contained herein is obtained from property owners or third-party sources which we believe are reliable. We have no reason to doubt its accuracy, however we



**Jacqui Robinson**

Principal - Jacqui Robinson Property

**M:** 0460 799 750

**E:** jacqui.robinson@smileelite.com

cannot guarantee it. All interested person/s should rely on their own enquiries.

**Features**

Built-In Robes

1 Ensuite

2 Living Areas

2 Open Spaces For Vehicles

Air Conditioning

**Land size**

577.00 Sqm

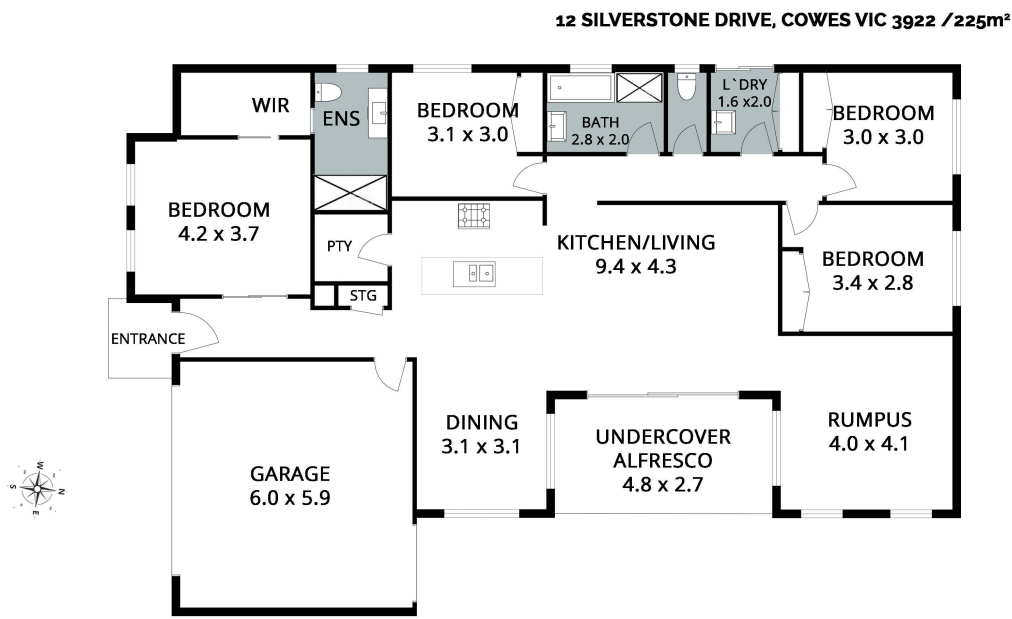


**Jacqui Robinson**

Principal - Jacqui Robinson Property

**M:** 0460 799 750

**E:** [jacqui.robinson@smileelite.com](mailto:jacqui.robinson@smileelite.com)



Scale in meters. Dimensions are approximate. All information contained herein is gathered from sources we believe to be reliable, however we cannot guarantee its accuracy and interested persons should rely on their own enquiries

Scale in metres. Dimensions are approximate. All information contained herein is gathered from sources we believe to be reliable, however we cannot guarantee its accuracy and interested persons should rely on their own enquiries.