



22 King Street, Uralla FOR SALE



Quaint Weatherboard Home

A quaint weatherboard home situated in a convenient location, this two-bedroom, one bathroom cottage oozes potential.

Situated just around the corner from popular eateries and the local brewery, you will be well connected to community events and the ever-growing activities the wonderful town of Uralla has to offer. Stroll down the footpath to the award-winning Alma Park and connecting to walking tracks and boutique shops and cafes.

Inside you will find a kitchen diner connected to the lounge room and two double bedrooms with shared bathroom.

At the rear of the property is a spacious under cover patio area overlooking the low-maintenance garden with single lock-up garage.

Alternatively, if you are exploring the potential to grow or start your investment portfolio, this well maintained house is definitely one to consider.

For more information or to book an inspection call Nathan today!

Features



Nathan Whitton

Principal – Nathan Whitton Property

M: 0435 252 908

E: nathan.whitton@smileelite.com



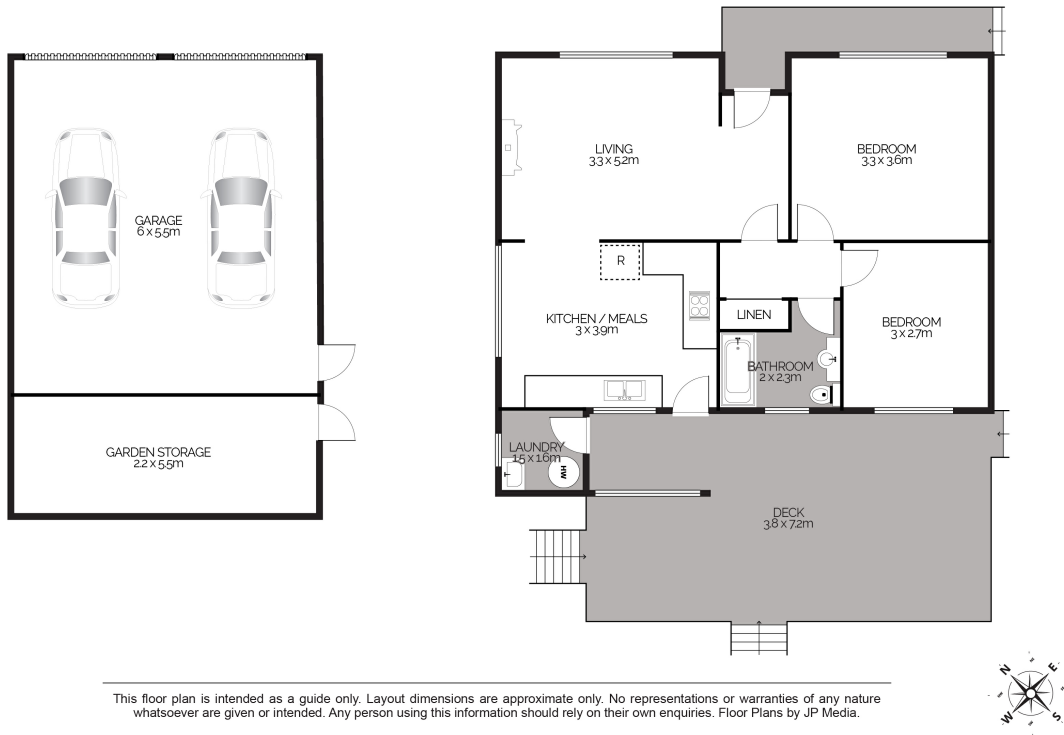
Nathan Whitton

Principal – Nathan Whitton Property

M: 0435 252 908

E: nathan.whitton@smileelite.com

22 King Street, URALLA



This floor plan is intended as a guide only. Layout dimensions are approximate only. No representations or warranties of any nature whatsoever are given or intended. Any person using this information should rely on their own enquiries. Floor Plans by JP Media.

Scale in metres. Dimensions are approximate. All information contained herein is gathered from sources we believe to be reliable, however we cannot guarantee its accuracy and interested persons should rely on their own enquiries.