



25 John Street, Uralla FOR SALE



Clover Cottage

This character filled cottage is the perfect blend of old world charm and modern day living. Renovated to maintain the period features of lead light windows and high ceilings. There are two bedrooms, study, family bathroom and a charming country kitchen, with the lounge room featuring a wood burning fire to keep the home toasty warm on cold winter nights.

A fabulous outdoor pergola is the perfect spot to relax while overlooking a private fully fenced back garden and firepit area.

Situated on a large 1012sqm block of land, in a quiet but central part of the township of Uralla, The cottage is ideally located with boutique shopping, schools, cafes and essential outlets just minutes away.

A boutique bed and breakfast occupies the cottage sleeping up to six guests, with a cosy country feel this property is bursting with charm.

Currently this well-established BnB has an occupancy rate of 90% and an annual turnover of around \$50,000, the opportunity to purchase a fully functional business is an option. Including current forward bookings, furniture and furnishings. An exciting possibility to consider.

To book an inspection or for further details call Nathan

Features

Land size

1,012.00 Sqm



Nathan Whitton

Principal – Nathan Whitton Property

M: 0435 252 908

E: nathan.whitton@smileelite.com



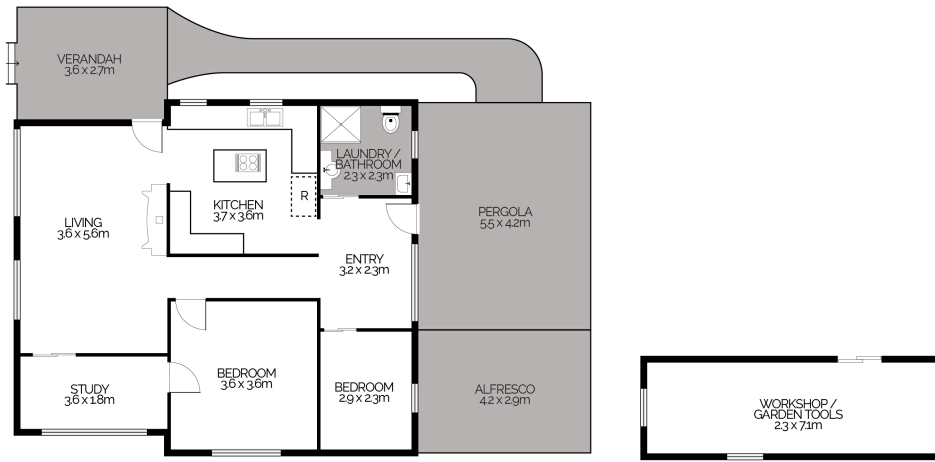
Nathan Whitton

Principal – Nathan Whitton Property

M: 0435 252 908

E: nathan.whitton@smileelite.com

25 John Street, URALLA



This floor plan is intended as a guide only. Layout dimensions are approximate only. No representations or warranties of any nature whatsoever are given or intended. Any person using this information should rely on their own enquiries. Floor Plans by JP Media.



Scale in metres. Dimensions are approximate. All information contained herein is gathered from sources we believe to be reliable, however we cannot guarantee its accuracy and interested persons should rely on their own enquiries.