



### 41 Elizabeth Circuit, Flinders FOR SALE



#### Designed for families with entertaining and lifestyle in mind!

Indulge in the epitome of single-level sophistication with this remarkable 4-bedroom family home – a resort-style entertainer that effortlessly combines space and tranquillity. Rarely does a residence capture the essence of contemporary family living with such finesse, setting a new standard for quality and comfort.

The heart of this home is an exquisite kitchen, adorned with bespoke cabinetry, top-tier appliances, a walk-in pantry, and a sprawling island bench that stands as the centrepiece. Designed with the gourmet chef in mind, this kitchen overlooks the open-plan family and dining areas. The seamless indoor/outdoor transitions through large sliding doors reveal a hidden oasis – a sparkling in-ground swimming pool and an enclosed all-weather alfresco space. This residence is tailor-made for backyard parties and entertainment, providing the perfect backdrop for making cherished family memories.

Don't miss the opportunity to make this resort-style family entertainer your own – a home where every day feels like a retreat.

#### Features

- Solar Panels
- 2 Toilets
- Built-In Robes
- Dishwasher
- 1 Ensuite
- 2 Living Areas
- NBN Available
- Deck
- Inground Pool
- Outside Entertaining Area
- Remote Garage Door
- Shed
- Ducted Cooling
- Ducted Heating

#### Land size



**Monique Field**

Principal - Monique Field Property

**M:** 0403 021 172

**E:** [monique.field@smileelite.com](mailto:monique.field@smileelite.com)



**Phoenix Smith**

Associate - Monique Field Property

**M:** 0421 850 852

**E:** [phoenix.smith@smileelite.com](mailto:phoenix.smith@smileelite.com)

536.00 Sqm

**Council rates**

\$676 per qtr

**Water rates**

\$173 per qtr



**Monique Field**

Principal - Monique Field Property

**M:** 0403 021 172

**E:** [monique.field@smileelite.com](mailto:monique.field@smileelite.com)

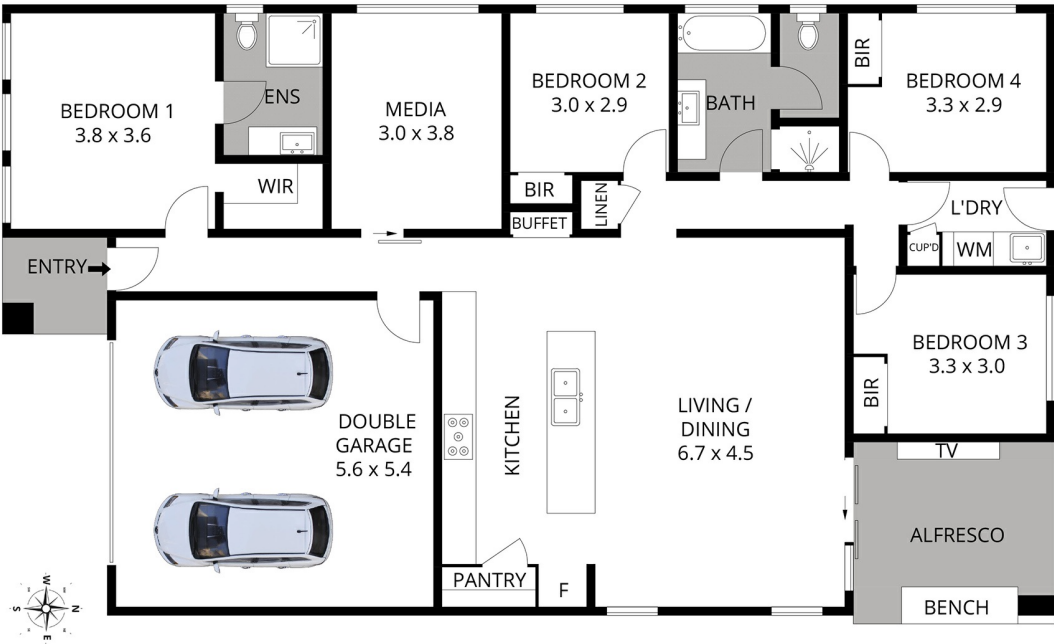


**Phoenix Smith**

Associate - Monique Field Property

**M:** 0421 850 852

**E:** [phoenix.smith@smileelite.com](mailto:phoenix.smith@smileelite.com)



Scale in metres. Dimensions are approximate. All information contained herein is gathered from sources we believe to be reliable, however we cannot guarantee its accuracy and interested persons should rely on their own enquiries.