



16 Cherrywood Crescent, Llanarth FOR SALE

Amazing Grace

It is rare to find a home of this calibre, and in this location, entering the market. Situated in exclusive Airlie Park Estate, in one of Bathurst's most sought-after streets, we are proud to present this exceptional architect-designed family home.

Premium features include:

- Elegant formal lounge, a light-filled family room, an elevated office/study, double height ceilings & polished hardwood timber flooring
- A timeless kitchen with quality appliances, granite benchtops, a sunny breakfast area & a covered outdoor entertaining patio with a huge servery window
- Large master suite with walk in robe and ensuite & three additional double bedrooms
- Central main bathroom & a ground floor powder room
- Ducted heating & cooling, a gas log fire in the lounge room & split system air-conditioning
- Delightful rear verandah, fully landscaped grounds with auto watering system & large shed
- Double garage & separate workshop with additional access via a unique internal lift
- All set on a generous 1,128sqm block

Features

3 Living Areas
Study

Land size

1,128.00 Sqm



Sandy Fairbrother

Principal - Cleary Fairbrother Property

M: 0438 436 161

E: sandy.fairbrother@smileelite.com



Jay Cleary

Principal - Cleary Fairbrother Property

M: 0439 891 872

E: jay.cleary@smileelite.com



Sandy Fairbrother

Principal - Cleary Fairbrother Property

M: 0438 436 161

E: sandy.fairbrother@smileelite.com



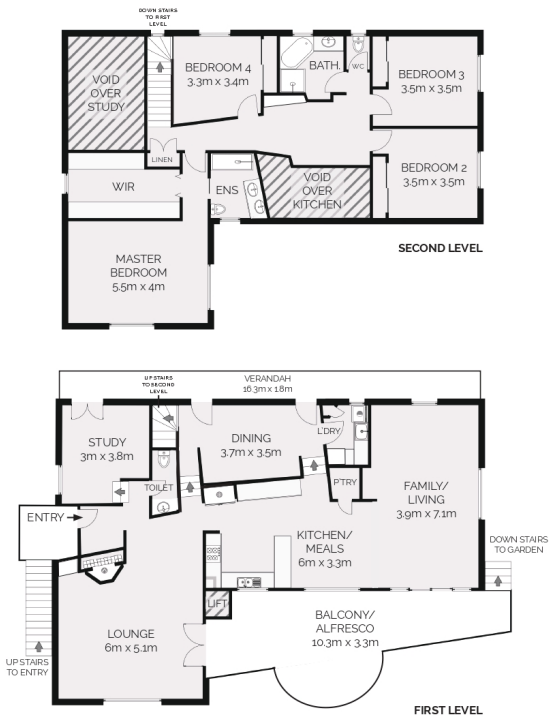
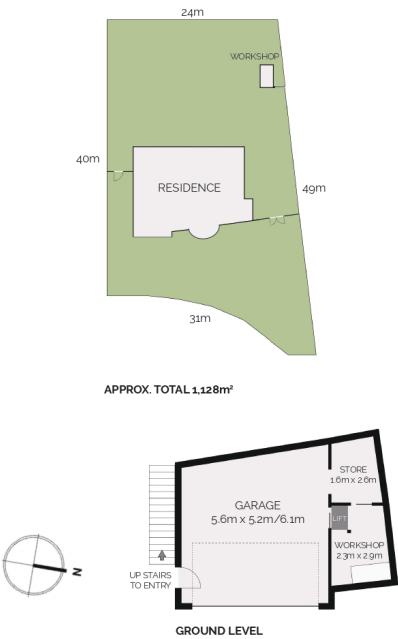
Jay Cleary

Principal - Cleary Fairbrother Property

M: 0439 891 872

E: jay.cleary@smileelite.com

16 CHERRYWOOD CR, LLANARTH



Scale in metres. Dimensions are approximate. All information contained herein is gathered from sources we believe to be reliable, however we cannot guarantee its accuracy and interested persons should rely on their own enquiries.

Scale in metres. Dimensions are approximate. All information contained herein is gathered from sources we believe to be reliable, however we cannot guarantee its accuracy and interested persons should rely on their own enquiries.