



## 29 Browning Drive, Glen Waverley FOR SALE



### Renovated family allure in a stunningly quiet court

Successfully marketed and Sold by Mark Kainey Property - Showcasing well-appointed interiors with splashes of modern style, on top of great alfresco highlights including a swimming pool, this four-bedroom, two-bathroom residence is a family superstar. Browning Drive is a whisper-quiet court that you'll love going home to every single day, and with The Glen Shopping Centre, excellent schools, and scenic parklands so close by, this incredible single-level home is sure to capture your attention.

The immaculate nature of this property will not be lost on buyers, with thoughtful renovations having been undertaken over the last few years. Generous formal lounge and dining is your exciting first impression, with this area flowing into the central hub of the home which delivers a large family room, casual meals, and stylish kitchen. This kitchen itself boasts sumptuous stone, a garden window for all your fresh herbs, soft-close drawers, and quality stainless steel appliances.

The master bedroom comes with walk-through BIRs plus a dazzling ensuite, with 3 other bedrooms featuring BIRs including the flexible front bedroom which gets great light and has office flexibility. The magnificent outdoor area at the rear has northern appeal and includes a large Vergola terrace for summer meals, a landscaped garden, and a solar-heated pool. Other property extras include a sleek spa bathroom, laundry with storage, ducted heating, evaporative cooling, split system heat/cool, shed/workshop, and double remote garage. The property also sits on a large 818 sqm (approx.).

So close to Highvale Secondary College, Highvale Primary School, Wesley College, Vermont South Shopping Centre, Licola Reserve, Billabong Park, Bushy Park Wetlands, buses, and Eastlink.

Disclaimer: All information contained herein is obtained from property owners or third-party sources which we believe are reliable. We have no reason to doubt its accuracy, however we cannot guarantee it. All interested person/s should rely on their own enquiries.

### Features

- 1 Ensuite
- 2 Open Spaces For Vehicles
- Air Conditioning



**Mark Kainey**  
Principal - Mark Kainey Property  
M: 0419 333 437  
E: mark.kaineys@smileelite.com

**Auction**  
18th Nov 2023 11:00AM

**Land size**

818.00 Sqm



**Mark Kainey**

Principal - Mark Kainey Property

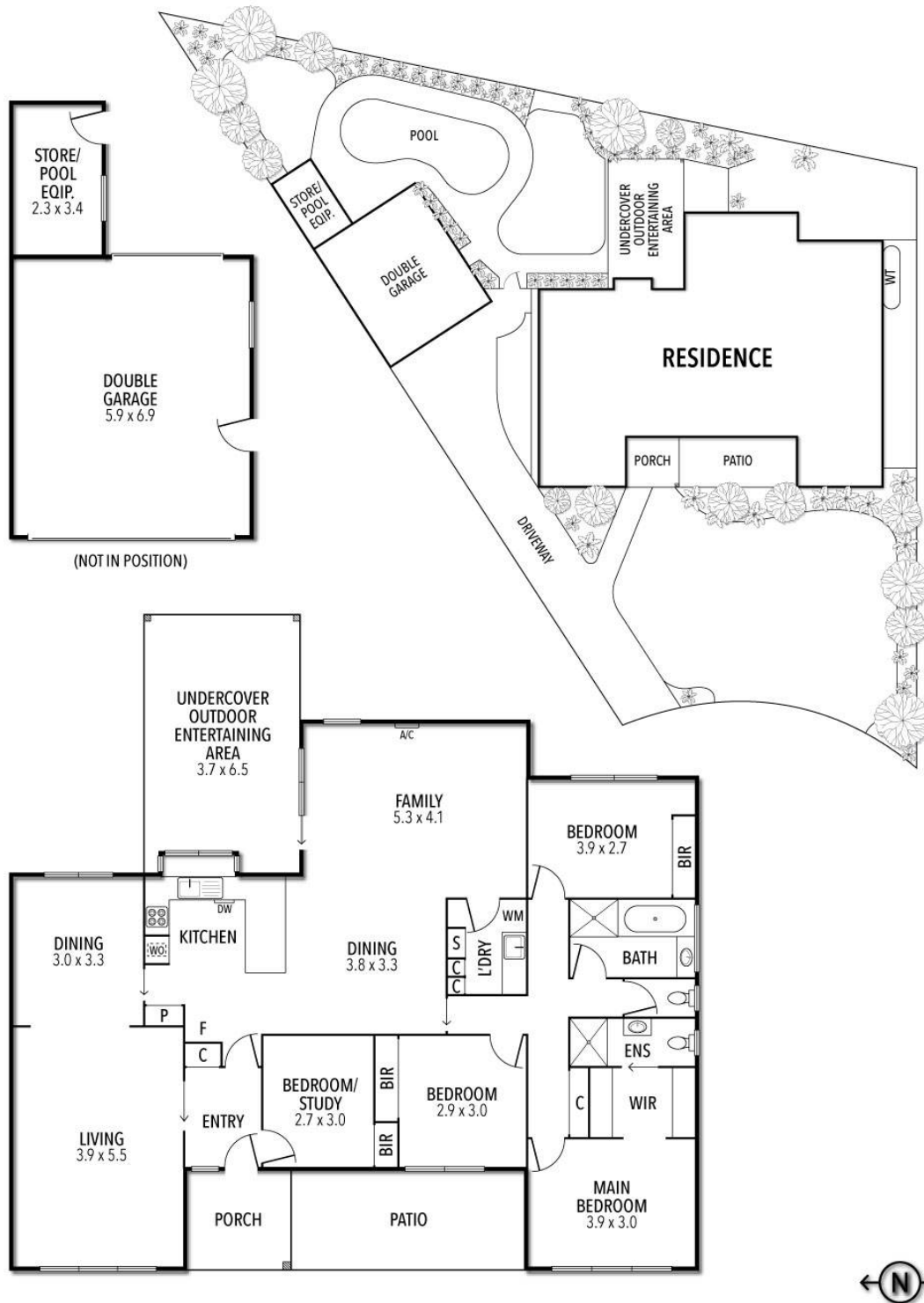
**M:** 0419 333 437

**E:** [mark.kainey@smileelite.com](mailto:mark.kainey@smileelite.com)

**Auction**

18th Nov 2023 11:00AM

## 29 BROWNING DRIVE, GLEN WAVERLEY



THE ABOVE PLAN IS AN ARTIST'S IMPRESSION ONLY, IT INCLUDES ELEMENTS THAT ARE FOR DISPLAY PURPOSES ONLY AND MAY NOT BE TO SCALE. LANDSCAPING SHOWN IS INDICATIVE ONLY. DIMENSIONS ARE APPROXIMATE.

Scale in metres. Dimensions are approximate. All information contained herein is gathered from sources we believe to be reliable, however we cannot guarantee its accuracy and interested persons should rely on their own enquiries.