



113/9 Marina Drive, Shell Cove FOR SALE



Your Luxury Harbourside Hideaway in Shell Cove Marina

It's time to embark on the next exciting chapter of your life, and this stunning harbourside residence is the perfect backdrop for your new lifestyle. Nestled in the heart of Shell Cove Marina, it offers a unique opportunity to embrace easy coastal living, with picturesque boardwalks and pristine beaches right at your doorstep.

This two-bedroom unit boasts an array of enticing features, starting with its spacious open-plan living spaces that effortlessly extend to a generous balcony. Entertaining is a delight in this setting, as the coastal breeze provides the perfect ambience. The kitchen is the heart of the apartment, offering ample storage and top-quality appliances. Gather around the kitchen island to swap stories, share recipes, and create cherished memories. It's a practical and stylish space, making meal preparation a joy.

If you're seeking a luxurious holiday retreat or an idyllic place to retire and savour the laid-back South Coast lifestyle, this absolute harbourfront apartment offers the ultimate opportunity. Make this exquisite harbourside hideaway your new home.

Disclaimer: All information contained herein is obtained from property owners or third-party sources which we believe are reliable. We have no reason to doubt its accuracy, however we cannot guarantee it. All interested person/s should rely on their own enquiries.

Features

- 2 Toilets
- Built-In Robes
- 1 Ensuite
- 1 Living Area
- Outside Entertaining Area
- Patio
- Ducted Cooling
- Ducted Heating

Council rates

\$250 per qtr



Monique Field
Principal - Monique Field Property
M: 0403 021 172
E: monique.field@smileelite.com



Phoenix Smith
Associate - Monique Field Property
M: 0421 850 852
E: phoenix.smith@smileelite.com

Open

17th Aug 2024 @ 10:30AM - 11:00AM



Monique Field

Principal - Monique Field Property

M: 0403 021 172

E: monique.field@smileelite.com



Phoenix Smith

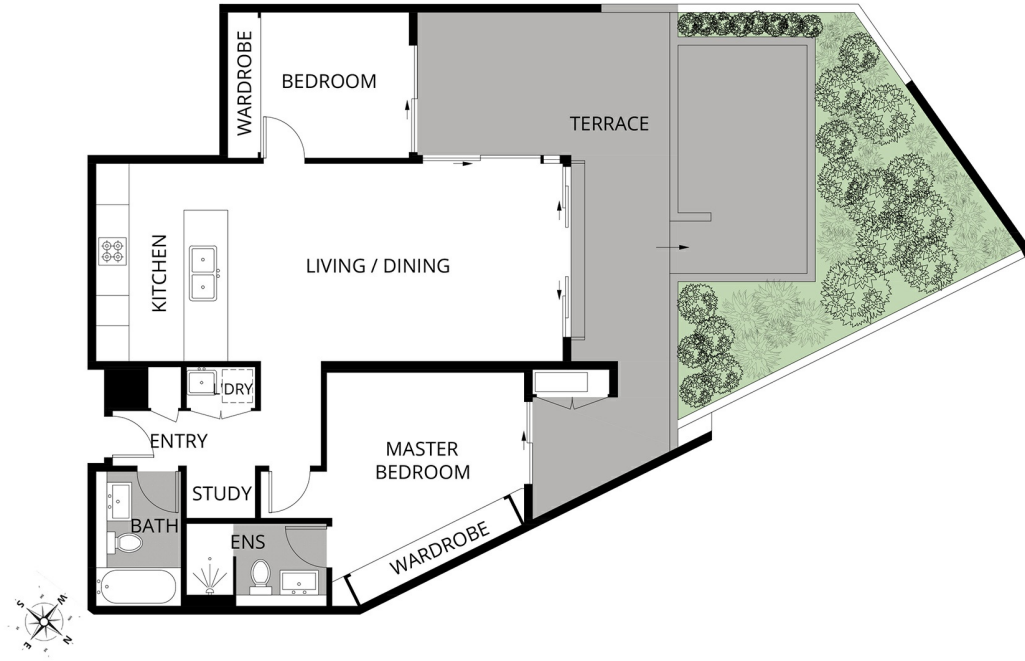
Associate - Monique Field Property

M: 0421 850 852

E: phoenix.smith@smileelite.com

Open

17th Aug 2024 @ 10:30AM - 11:00AM



Scale in metres. Dimensions are approximate. All information contained herein is gathered from sources we believe to be reliable, however we cannot guarantee its accuracy and interested persons should rely on their own enquiries.