



2/23 Wollingurri Street, Haywards Bay FOR SALE

Low Maintenance Living, the size will surprise

Discover the perfect blend of convenience and comfort in this 4-bedroom, single-level duplex located in a peaceful cul-de-sac in Haywards Bay. This spacious home offers a practical floor plan and is sure to surprise you as it is deceiving in size.

Situated in an excellent location, it's just a stone's throw away from parkland, reserves, and a community park, making it an ideal choice for those looking to downsize or first-time buyers seeking a family-friendly environment.

Don't miss the opportunity to make this stunning duplex your new home. Contact us today to arrange a viewing and experience the comfortable and convenient lifestyle that Haywards Bay has to offer.

Features

- 2 Toilets
- Built-In Robes
- Dishwasher
- 1 Ensuite
- 2 Living Areas
- Outside Entertaining Area
- Remote Garage Door
- Shed
- Ducted Cooling
- Ducted Heating

Land size

354.00 Sqm



Monique Field

Principal - Monique Field Property

M: 0403 021 172

E: monique.field@smileelite.com



Phoenix Smith

Associate - Monique Field Property

M: 0421 850 852

E: phoenix.smith@smileelite.com



Monique Field

Principal - Monique Field Property

M: 0403 021 172

E: monique.field@smileelite.com

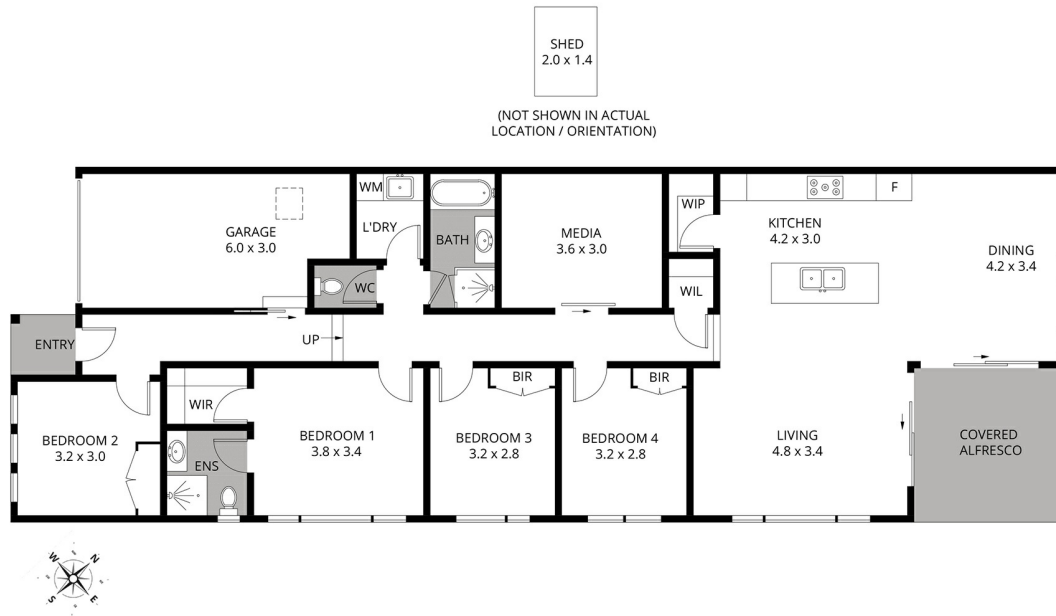


Phoenix Smith

Associate - Monique Field Property

M: 0421 850 852

E: phoenix.smith@smileelite.com



Scale in metres. Dimensions are approximate. All information contained herein is gathered from sources we believe to be reliable, however we cannot guarantee its accuracy and interested persons should rely on their own enquiries.