



## 15 Barnsbury Close, HAMPTON PARK FOR SALE

### Family Home In Quiet Cul-De-Sac

This immaculately presented 3 bedroom brick veneer home is situated on approx. 752sqm of prime land, with its 2 separate living areas, large outdoor entertainment area and quiet cul-de-sac locale makes the perfect first home/investment!

As you enter the home you're greeted by the formal lounge with its fresh new coat of paint and windows looking out to the street you'll never need to worry where the kids are again!

Continuing through you have the first bedroom on your left as you enter the home complete with BIR's, The master bedroom has a full ensuite and BIR's while the last bedroom has BIR's. The kitchen comes complete with stainless steel appliances including dishwasher, being conveniently located adjacent to the dining room you can serve your guests with ease! The second living area has two separate doors leading to the backyard and garage to allow for alternative access to the house.

Heading outside you have a large pergola and ample backyard space perfect for entertaining all your family/friends while still having space for the kids to play!

Local Amenities Include;

- Hampton Park Secondary School
- Hampton Park Primary School
- Hampton Park Shopping Centre
- Hallam Train Station

So for all you astute buyers and families out there if this home ticks all the boxes, call Nasir Azizi today on 0413 625 562 to secure yourself this wonderful property!

### Features

#### Land size

752.00 Sqm



**Nasir Azizi**

Principal - Nasir Azizi Property

M: 0413 625 562

E: [nasir.azizi@smileelite.com](mailto:nasir.azizi@smileelite.com)



**Nasir Azizi**

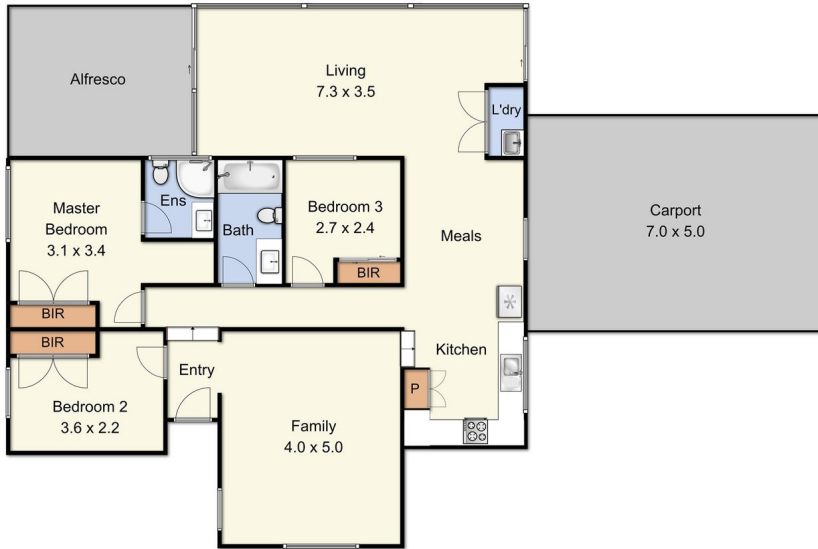
**Principal - Nasir Azizi Property**

**M:** 0413 625 562

**E:** [nasir.azizi@smileelite.com](mailto:nasir.azizi@smileelite.com)



15 Barnsbury Close, Hampton Park



This drawing is for illustrative purposes only and while every effort has been made to maintain accuracy, prospective purchasers should check all information

Scale in metres. Dimensions are approximate. All information contained herein is gathered from sources we believe to be reliable, however we cannot guarantee its accuracy and interested persons should rely on their own enquiries.