



**63 Dampier Drive, GOLDEN BAY
FOR SALE**

2 bedroom house

Charming Coastal Vibe

DON'T DELAY BOOK A VIEWING TODAY!

This charming two bedroom home features jarrah flooring, air conditioning, side access and an extra-long carport with workshop and massive patio entertaining area with tranquil water feature and shade sail to protect from the harsh summer sun.

The gardens are well established and cool and inviting offering different areas to relax in.

An added bonus separate to the house is your own fully air-conditioned games room/studio/retreat with toilet and shower. Ideal as a teen or adult retreat, Air BNB or studio.

Located so close to Golden Bay Beach you can hear the waves crashing yet all within walking distance to the local shopping centre and schools.

This home will not last, so get in quick.

Open Plan Living: Bright and airy lounge and dining area featuring hardwood jarrah floors.

Kitchen: Spacious kitchen fitted with a range of wall and base units, freestanding stainless steel 5 burner cooker and overhead extractor fan and room for a breakfast table.

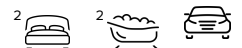
Bedroom: Both master and second bedrooms are bright and spacious with jarrah flooring.

Outside: The large gardens are established and are cool and inviting with different areas to explore and relax.

Outbuildings: An added bonus, and separate to the house, is an air conditioned games room/studio/retreat with toilet and shower.

Features

1 Ensuite
Floorboards



Denise Lewis

Principal - Lewis Holloway Property

M: 0412 877 613

E: denise.lewis@smileelite.com

1 Living Area
Rumpus Room
Study
2 Carports
Fully Fenced
Outside Entertaining Area
Shed
Gas Heating

Land size

845.00 Sqm

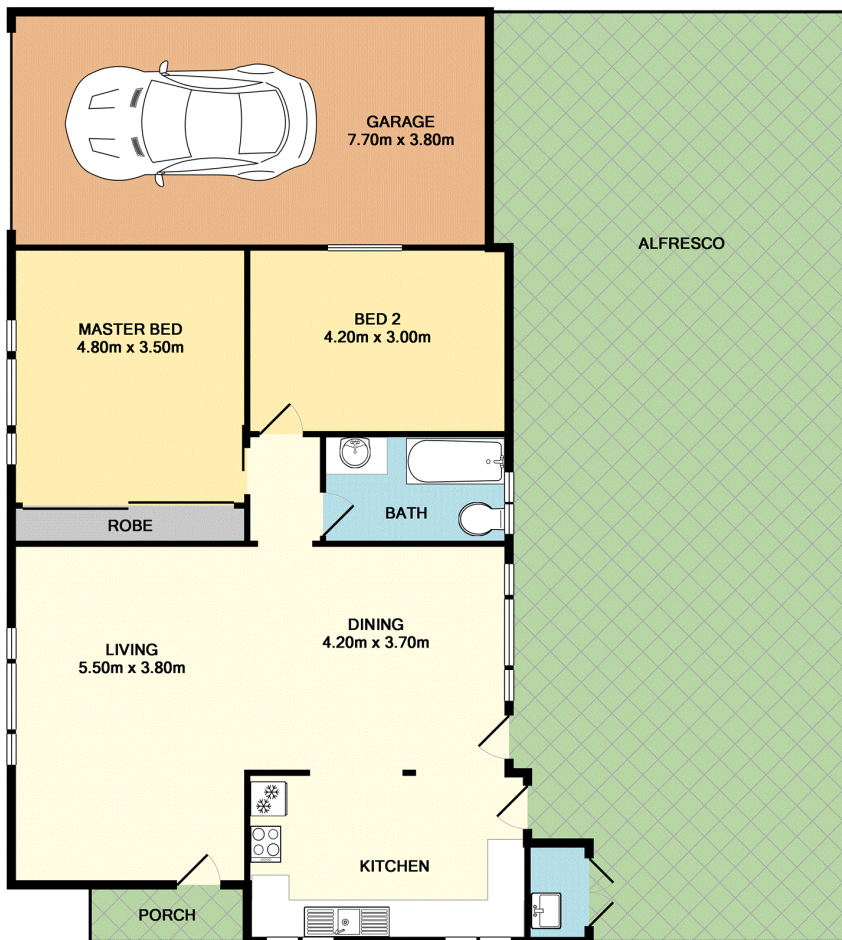
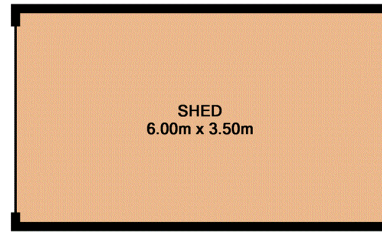
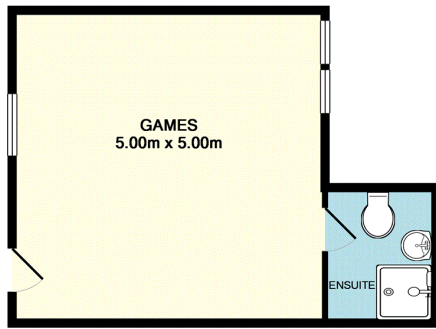


Denise Lewis

Principal - Lewis Holloway Property

M: 0412 877 613

E: denise.lewis@smileelite.com



TOTAL APPROX. FLOOR AREA 170.8 SQ.M. (1839 SQ.FT.)

Whilst every attempt has been made to ensure the accuracy of the floor plan contained here, measurements of doors, windows, rooms and any other items are approximate and no responsibility is taken for any error, omission, or mis-statement. This plan is for illustrative purposes only and should be used as such by any prospective purchaser. The services, systems and appliances shown have not been tested and no guarantee as to their operability or efficiency can be given
 Made with Metropix ©2017

Scale in metres. Dimensions are approximate. All information contained herein is gathered from sources we believe to be reliable, however we cannot guarantee its accuracy and interested persons should rely on their own enquiries.