



4 Eton Court, PARMELIA FOR SALE



4 bedroom house

QUIET ENTERTAINER - VALUE PLUS

Welcome to 4 Eton Court located in quiet cul de sac with beautiful elevated views and landscaped gardens and deck.

This beautifully presented family home on a 547 square metre block is perfect for entertaining family and friends on your spacious and decked alfresco with plenty of seating areas and limestone retaining walls.

From your generous open plan kitchen living areas overlooking landscaped gardens a sense of calm evokes.

You will be instantly drawn to the wooden flooring and wall to wall windows of light, making this a spacious home with all the levels of style you seek.

Your home theatre is the perfect place to catch up on all your sport or flicks and is ready for you to hit play.

The modern open plan layout, master suite with two generous walk in robes and double shower, three queen size bedrooms and large powered workshop for all your tools of the trade offer all that any aspiring tradie or hobbyist would love.

With this much on offer you would be hard pressed to find better style or value in this sought after street.

Home Theatre: You will never get bored at home with this home theatre room.

Invite your friends for a movie night or or game day as this room can easily accommodate 8 or more.

Kitchen: Modern, open plan with stainless steel appliances overlooking stunning living /dining and alfresco.

Open Plan Living: Graced with immaculate wooden flooring and living space overlooking the alfresco area you can easily entertain without missing the party as the floor to ceiling picture



Denise Lewis

Principal - Lewis Holloway Property

M: 0412 877 613

E: denise.lewis@smileelite.com

windows allow plenty of light and access to the outdoors.

Your pantry, chefs kitchen, stainless steel appliances and plenty of bench and storage space will leave you looking like a master chef.

Master Bedroom: Thanks to large picture windows your King size master suite appears light and bright with two generous walk in robes, well appointed en suite and double shower.

Features

- Alarm System
- Built-In Robes
- Dishwasher
- 1 Ensuite
- Floorboards
- 3 Living Areas
- 4 Carports
- Deck
- Outside Entertaining Area
- Remote Garage Door
- Secure Parking
- Shed
- Ducted Cooling
- Ducted Heating

Land size

547.00 Sqm

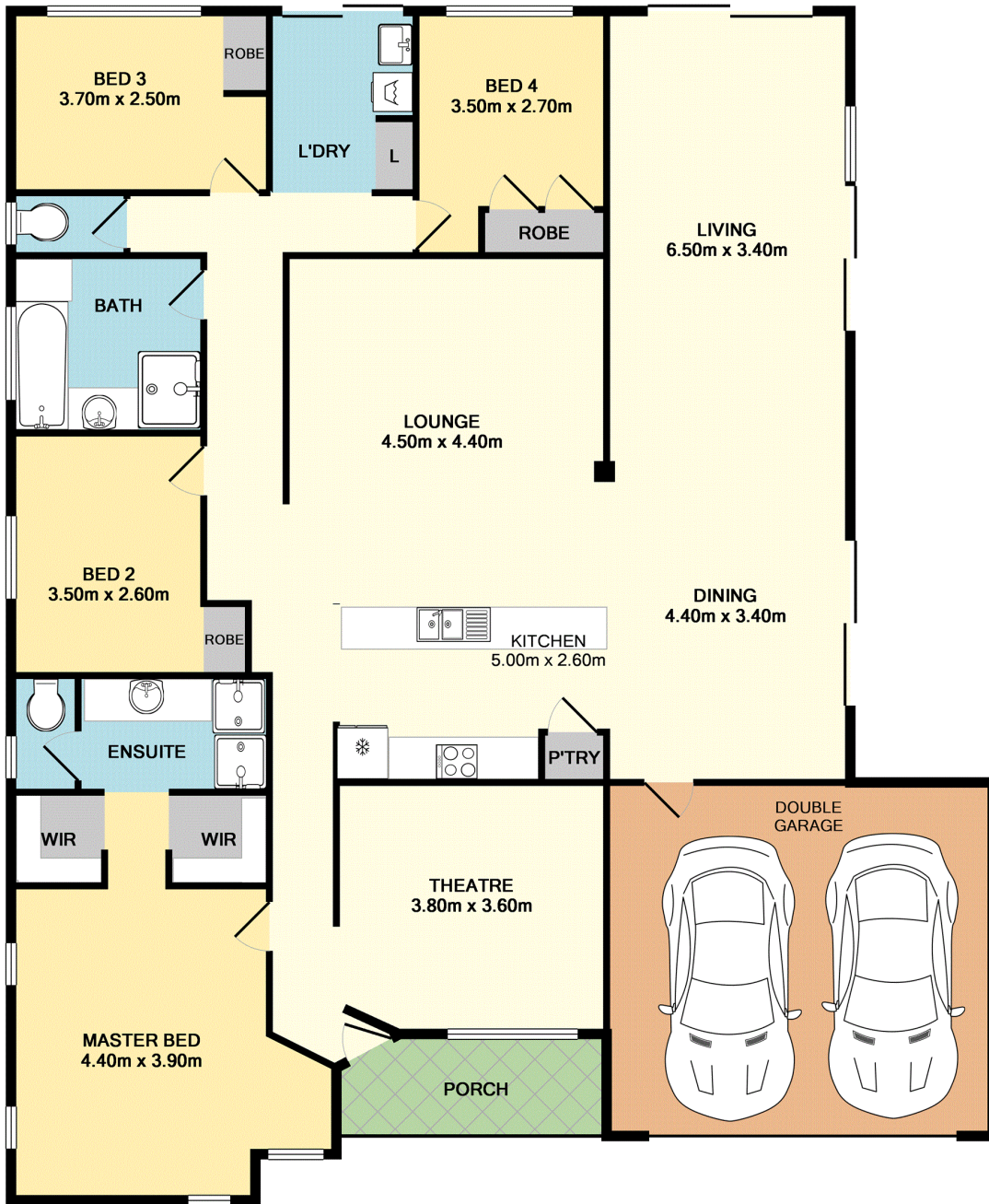


Denise Lewis

Principal - Lewis Holloway Property

M: 0412 877 613

E: denise.lewis@smileelite.com



TOTAL APPROX. FLOOR AREA 201.9 SQ.M. (2174 SQ.FT.)

Whilst every attempt has been made to ensure the accuracy of the floor plan contained here, measurements of doors, windows, rooms and any other items are approximate and no responsibility is taken for any error, omission, or mis-statement. This plan is for illustrative purposes only and should be used as such by any prospective purchaser. The services, systems and appliances shown have not been tested and no guarantee as to their operability or efficiency can be given
 Made with Metropix ©2017

Scale in metres. Dimensions are approximate. All information contained herein is gathered from sources we believe to be reliable, however we cannot guarantee its accuracy and interested persons should rely on their own enquiries.