



### 9B Carnegie Place, GREENFIELDS FOR SALE

4 bedroom house

RIVERSIDE LOCATION

DON'T WAIT FOR A HOME OPEN, BOOK A VIEWING TODAY.

A relaxed lifestyle and the outdoors could soon be yours at 9B Carnegie Place, Greenfields - the perfect place to unwind after reeling in your catch of the day!

Nestled down by the river in a quiet section of Greenfields is this immaculately presented little gem on a good sized 412m2 corner block.

Imagine having a wine or beer under the patio after a day spent fishing in the Serpentine River.

Open plan/ spacious living with tidy gardens a short stroll to the Serpentine River you are guaranteed to keep your cool all summer as the home boasts large street frontage, new flooring, ceiling fans and ducted reverse cycle air conditioning throughout.

A spacious master suite with built in mirrored robes and en-suite plus two good sized bedrooms and shared family bathroom are on offer.

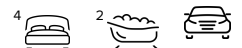
The open plan modern kitchen with breakfast bar offers views and direct access to the alfresco through a wall of windows. Here is a space to enjoy with family and friends.

You will never run out of space with floor to ceiling cupboards and smooth glide dish drawers, a 900mm gas hob, electric oven, dishwasher and pantry.

The alfresco and garden is also impressive with space for entertaining, a small garden shed and side access and parking for a boat, caravan or two or more cars.

The picturesque parks and river on your doorstep offer an array of options to explore the many walk trails and fishing spots nearby.

You are simply spoilt for choice when it comes to lifestyle and location as this home will make the perfect investment or first home by the river.



Denise Lewis

Principal - Lewis Holloway Property

M: 0412 877 613

E: denise.lewis@smileelite.com

Act today and move in tomorrow.

Local Area: If you fancy a spot of fishing why not take the rods, kids and dogs down to Riverside Gardens Reserve and the gorgeous Serpentine River where you can picnic, kayak or fish all day long.

This home is a great find in Greenfields as it offers ample accommodation options for a family or downsizer and all close to local amenities including public transport stops, Peel Health Campus, Murdoch University, Riverside Primary School and local childcare services only minutes away by car or foot.

### Features

- Built-In Robes
- Dishwasher
- 1 Ensuite
- Floorboards
- 2 Living Areas
- 2 Carports
- Courtyard
- Outside Entertaining Area
- Remote Garage Door
- Secure Parking
- Air Conditioning
- Ducted Cooling
- Ducted Heating

### Land size

412.00 Sqm

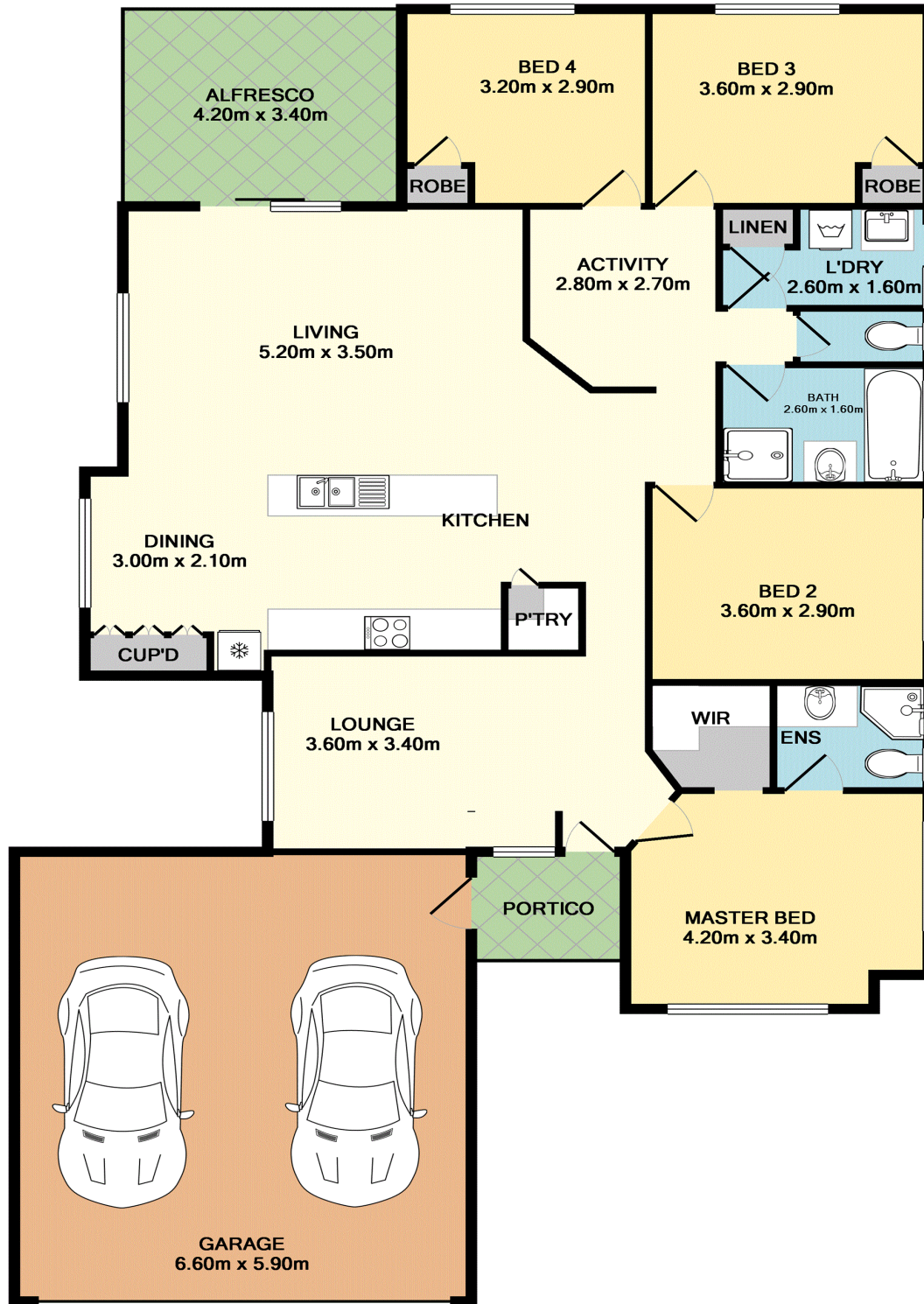


**Denise Lewis**

Principal - Lewis Holloway Property

**M:** 0412 877 613

**E:** [denise.lewis@smileelite.com](mailto:denise.lewis@smileelite.com)



TOTAL APPROX. FLOOR AREA 162.7 SQ.M. (1752 SQ.FT.)

Whilst every attempt has been made to ensure the accuracy of the floor plan contained here, measurements of doors, windows, rooms and any other items are approximate and no responsibility is taken for any error, omission, or mis-statement. This plan is for illustrative purposes only and should be used as such by any prospective purchaser. The services, systems and appliances shown have not been tested and no guarantee as to their operability or efficiency can be given  
 Made with Metropix ©2017

Scale in metres. Dimensions are approximate. All information contained herein is gathered from sources we believe to be reliable, however we cannot guarantee its accuracy and interested persons should rely on their own enquiries.