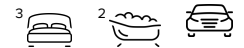




### 67 Maiden Way, BALDIVIS FOR SALE



#### 3 bedroom house

#### PARKSIDE ENTERTAINER

Bowl yourself a Maiden over this stunner.

DON'T WAIT FOR A HOME OPEN, BOOK A VIEWING TODAY.

This 2015 quality home opposite a gorgeous park on Maiden Way is nestled amongst quality homes in sought after Baldivis.

Featuring a spacious open plan kitchen and living areas and separate entertainment zone for your home cinema, this home will be perfect for family movie nights.

Additional features include keyless entry, monitored security system, hardwood floors, LED downlights and ducted reverse cycle air conditioning throughout ensuring your home is cool, cost effective, safe and cosy for year round comfort.

The master suite is spacious enough for two and guest bedrooms located at the rear are all queen size with plenty of storage space.

The added luxury of an expansive walk in scullery and laundry into the kitchen ensures you have handy access for all your grocery and laundry needs.

Outdoors your garden awaits with a private landscaped yard with plenty of room for a pool or kids play areas as you gaze out under your spacious alfresco. Rear access down the side and reticulated gardens have all been well designed for low maintenance so you can spend more time enjoying life.

With this great sized home and layout there is plenty of room for everyone to live in comfort indoors and out.

Living / Dining Room: Overlooking the living/dining and alfresco is your spacious open plan kitchen, where you can appreciate entertaining for large groups with your spacious breakfast bar, double plumbed fridge recess, stainless steel appliances, dishwasher and floor to ceiling



**Denise Lewis**

Principal - Lewis Holloway Property

**M:** 0412 877 613

**E:** denise.lewis@smileelite.com

overhead and under bench cupboard and bench space.

Surrounding Area: With the soon to be built shopping centre nearby and schools within walking distance the picturesque Warnbro Beach a short 10 minutes to the west and Kwinana Freeway entrance 4 minutes to the east makes it the ideal location for a better home-work-school-life balance.

### Features

- ADSL Available
- Alarm System
- Built-In Robes
- Dishwasher
- 1 Ensuite
- Floorboards
- 2 Living Areas
- 2 Carports
- Fully Fenced
- Outside Entertaining Area
- Remote Garage Door
- Secure Parking
- Air Conditioning
- Evaporative Cooling
- Gas Heating

### Land size

360.00 Sqm

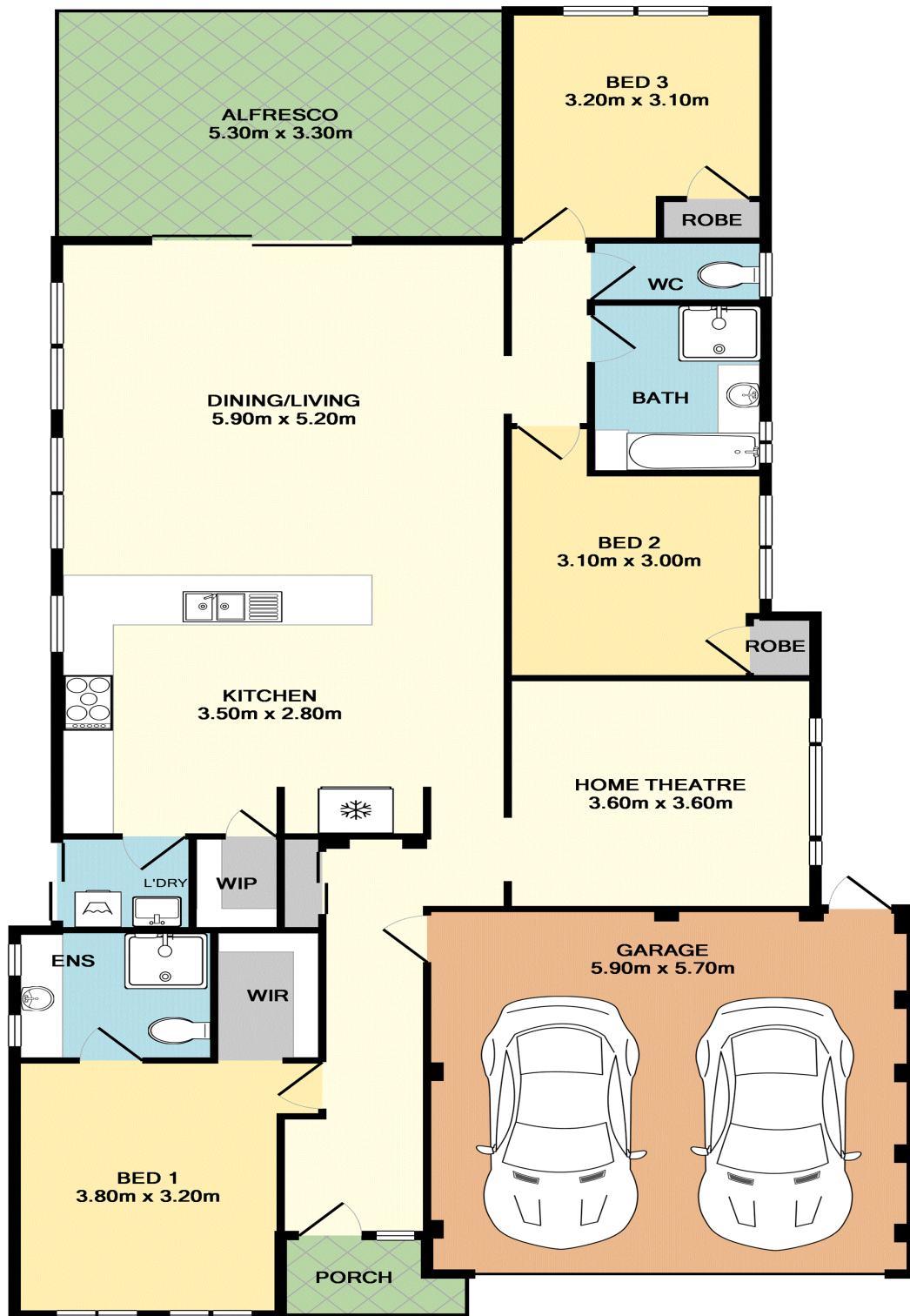


**Denise Lewis**

Principal - Lewis Holloway Property

**M:** 0412 877 613

**E:** [denise.lewis@smileelite.com](mailto:denise.lewis@smileelite.com)



TOTAL APPROX. FLOOR AREA 169.7 SQ.M. (1827 SQ.FT.)

Whilst every attempt has been made to ensure the accuracy of the floor plan contained here, measurements of doors, windows, rooms and any other items are approximate and no responsibility is taken for any error, omission, or mis-statement. This plan is for illustrative purposes only and should be used as such by any prospective purchaser. The services, systems and appliances shown have not been tested and no guarantee as to their operability or efficiency can be given  
 Made with Metropix ©2017

Scale in metres. Dimensions are approximate. All information contained herein is gathered from sources we believe to be reliable, however we cannot guarantee its accuracy and interested persons should rely on their own enquiries.