



90 Meadow Springs Drive, MEADOW SPRINGS FOR SALE

4 bedroom house

HOLIDAY MODE YEAR-ROUND

Endless hours can be spent on the golf course or crisp blue waters and white sandy beaches in year round holiday mode with this getaway in the heart of the Meadow Springs Golf Club

Surrounded by lush parklands, an international golf course and beautiful beaches this 200sm open plan home features wooden flooring and air-conditioning throughout with a private patio overlooking lovely landscaped and and reticulated lawns and gardens with limestone retaining walls on an easy care 576sm lock up and leave block, perfect for downsizers, work or travel.

There is a wonderful outlook overlooking landscaped gardens from the living areas inside and out creating a wonderful sense of space.

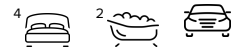
The home offers great separation with the parents retreat at the front and the guest wing and games room at the rear of the home allowing room for parents and kids to enjoy their own time while still having the ability to come together in the open plan living and dining rooms or home theatre.

All 3 bedrooms have built-in robes and are close to the main bathroom, games room, kitchen and laundry while the parents suite at the front enjoys privacy with picture windows, two dressing rooms and a spacious ensuite.

The home is perfect for entertaining with a large front lounge/theatre room for family movie nights through to the open plan living and large games room, well appointed chefs kitchen and breakfast bar, dish drawers, gas oven, dishwasher, large pantry and handy shoppers entry direct from the garage.

This home truly captures the essence of a holiday getaway. So get in quick, it won't be on the market long.

Surrounding Area: Within walking distance to the Meadow Springs Primary School just around the corner, Golf & Country Club, Shopping Centre and parks and open spaces including Quarry Adventure Park you can be sitting on some of Mandurah's most beautiful beaches within minutes.



Denise Lewis

Principal - Lewis Holloway Property

M: 0412 877 613

E: denise.lewis@smileelite.com

Features

ADSL Available
Built-In Robes
Dishwasher
1 Ensuite
Floorboards
2 Living Areas
Pay TV Access
Rumpus Room
Study
2 Carports
Fully Fenced
Outside Entertaining Area
Remote Garage Door
Secure Parking
Air Conditioning
Ducted Cooling
Ducted Heating
Evaporative Cooling
Gas Heating

Land size

576.00 Sqm

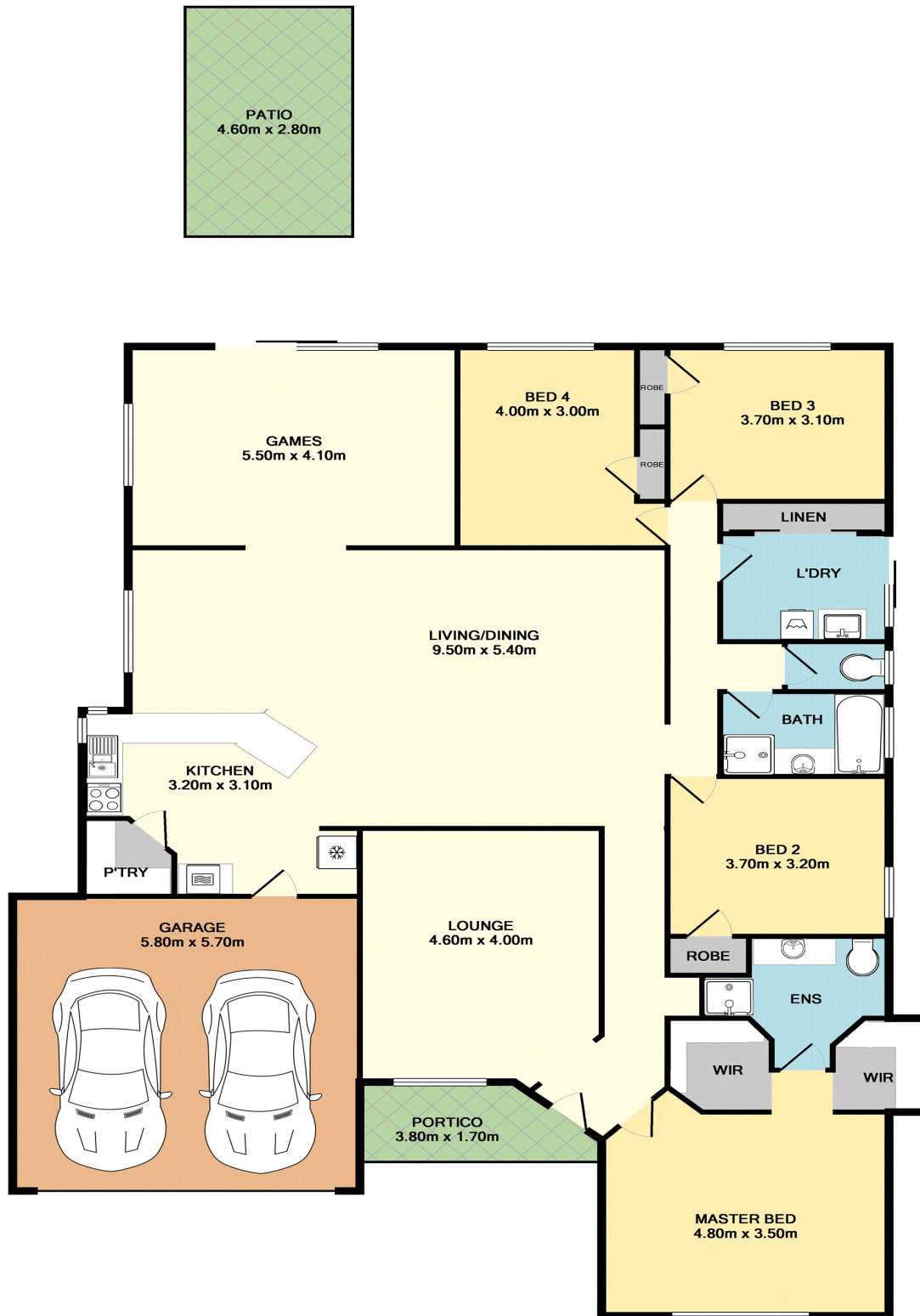


Denise Lewis

Principal - Lewis Holloway Property

M: 0412 877 613

E: denise.lewis@smileelite.com



TOTAL APPROX. FLOOR AREA 234.4 SQ.M. (2523 SQ.FT.)

Whilst every attempt has been made to ensure the accuracy of the floor plan contained here, measurements of doors, windows, rooms and any other items are approximate and no responsibility is taken for any error, omission, or mis-statement. This plan is for illustrative purposes only and should be used as such by any prospective purchaser. The services, systems and appliances shown have not been tested and no guarantee as to their operability or efficiency can be given
 Made with Metropix ©2018

Scale in metres. Dimensions are approximate. All information contained herein is gathered from sources we believe to be reliable, however we cannot guarantee its accuracy and interested persons should rely on their own enquiries.