



15 Diamante Place, MEADOW SPRINGS FOR SALE



4 bedroom house

Welcome to 15 Diamante Place, Meadow Springs!

Stylish family living in as-new contemporary home.

This immaculate home is just four years young and features modern living with the finest contemporary quality throughout and plenty of space to put in a pool (STCA) on a generous 605sqm block.

Peacefully set in a quiet cul-de-sac it would be perfect for a young family as its within walking distance to Quarry Park and choice of good schools

The enormous open-plan living/dining will impress with high ceilings and trendy stone-look over-sized floor tiles.

A separate carpeted home theatre off the living/dining area through stylish double doors will be a hit with your whole family, and the designer kitchen features a walk-in pantry, stone bench tops, 900mm gas cook top, stainless steel built-in oven, dishwasher recess and on-trend pendant lighting.

The master bedroom is privately located off the entry foyer at the front of the home and features a walk-in robe and modern en-suite with corner shower.

The second, third and fourth bedrooms all with built-in robes join the main bathroom with bath, shower and separate toilet, plus a walk-in linen cupboard and well-equipped internal laundry with outdoor access in a separate wing of the home.

You'll love entertaining on the generous integrated patio that's off the main living/dining area and overlooks the generous corner lawn and shed in the large backyard with plenty of space to put in a pool (STCA).

Features: -- Quality brick home is just four years young
-- Ducted reverse-cycle air conditioning throughout
-- Tiles to living areas; carpet to home theatre and bedrooms
-- Walk-in robe and ensuite to master bedrooms



Denise Lewis

Principal - Lewis Holloway Property

M: 0412 877 613

E: denise.lewis@smileelite.com

- Built-in robes to three extra bedrooms
- NBN ready to go for super-fast internet connection
- Large 605sqm block in quality neighbourhood

Surrounding Area: Just 200m from your doorstep to the fantastic Meadow Springs Golf Course, and less than 2km as the crow flies to stunning San Remo Beach.

Features

ADSL Available
Built-In Robes
Dishwasher
1 Ensuite
1 Living Area
2 Carports
Fully Fenced
Outside Entertaining Area
Remote Garage Door
Secure Parking
Ducted Cooling
Ducted Heating

Land size

605.00 Sqm

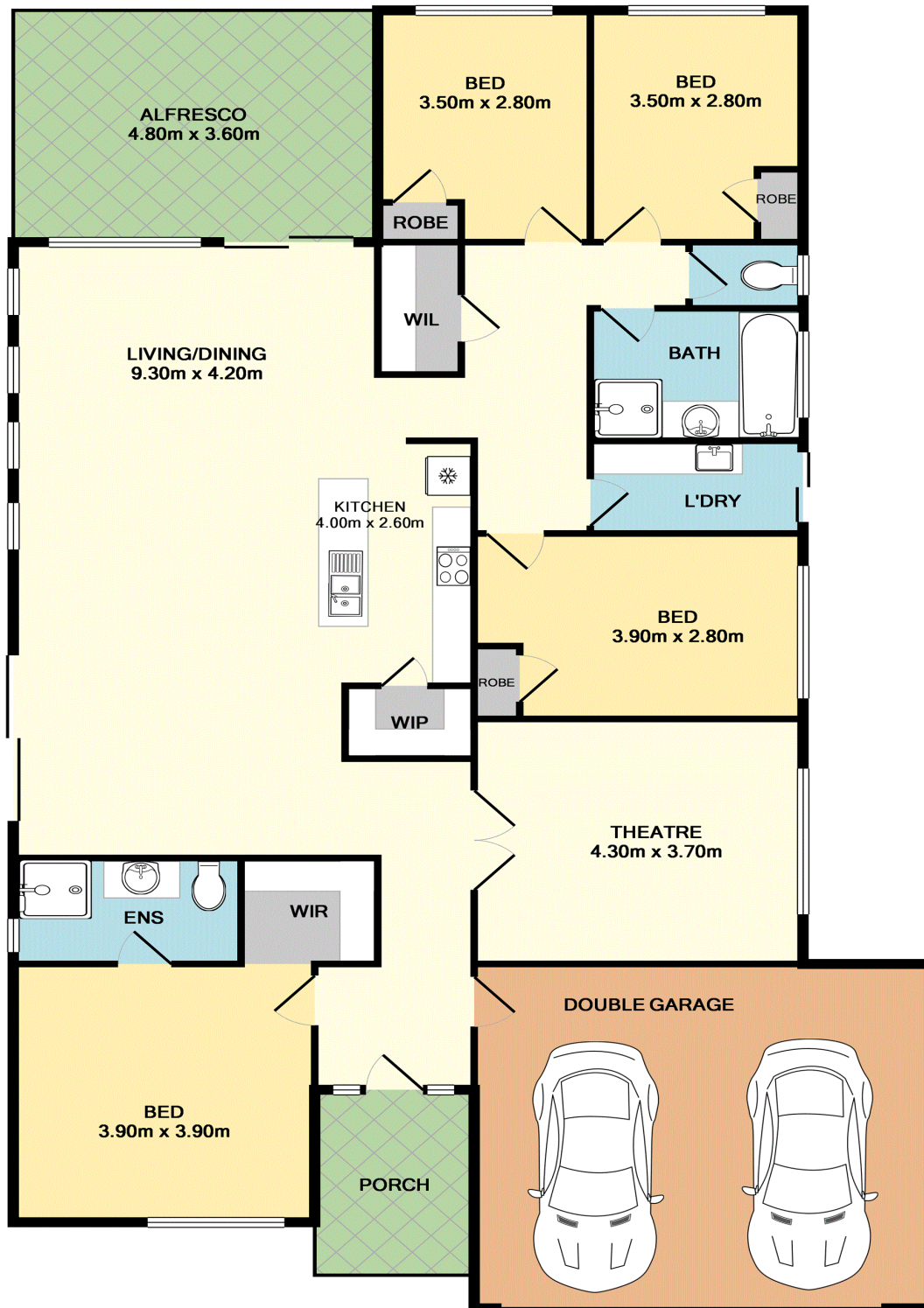


Denise Lewis

Principal - Lewis Holloway Property

M: 0412 877 613

E: denise.lewis@smileelite.com



TOTAL APPROX. FLOOR AREA 183.6 SQ.M. (1977 SQ.FT.)

Whilst every attempt has been made to ensure the accuracy of the floor plan contained here, measurements of doors, windows, rooms and any other items are approximate and no responsibility is taken for any error, omission, or mis-statement. This plan is for illustrative purposes only and should be used as such by any prospective purchaser. The services, systems and appliances shown have not been tested and no guarantee as to their operability or efficiency can be given
 Made with Metropix ©2018

Scale in metres. Dimensions are approximate. All information contained herein is gathered from sources we believe to be reliable, however we cannot guarantee its accuracy and interested persons should rely on their own enquiries.