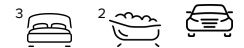




190 Pebble Beach Boulevard, MEADOW SPRINGS FOR SALE



3 bedroom house

Welcome to 190 Pebble Beach Boulevard, Meadow Springs!

Neat, sweet and complete!

First-home buyers will love this immaculate brick-and-tile home that offers plenty of space to start a family; downsizers note the low-maintenance single-level living on offer; and investors act fast to secure this quality lock-and-leave home with strong rent potential.

- Reverse-cycle ducted air conditioning throughout
- Tiled open-plan living/dining area, plus separate carpeted home theatre
- Premium chef's kitchen with stone bench tops and breakfast bar
- Gas cooking, stainless steel appliances and double pantry also to kitchen
- Master bedroom privately located at front with walk-in robe and ensuite
- Built-in robes and carpet to spacious second and third bedrooms
- Immaculate modern main bathroom with bath, shower and separate toilet
- Alfresco patio with café blinds; lawn and easy-care gardens in private backyard
- Well-equipped internal laundry with built-in storage and outdoor access
- NBN connected; rear access to double lock-up garage with internal entry

The home is centrally located walking distance to popular Quarry Park, and close to schools and public transport. It's also a five-minute drive to the beach, nearby Meadow Springs Shopping Centre adds convenience, and all major amenities are a short drive away in Mandurah town centre.

Features

- ADSL Available
- Built-In Robes
- 1 Ensuite
- 1 Living Area
- 2 Carports
- Fully Fenced
- Outside Entertaining Area
- Remote Garage Door
- Secure Parking



Denise Lewis

Principal - Lewis Holloway Property

M: 0412 877 613

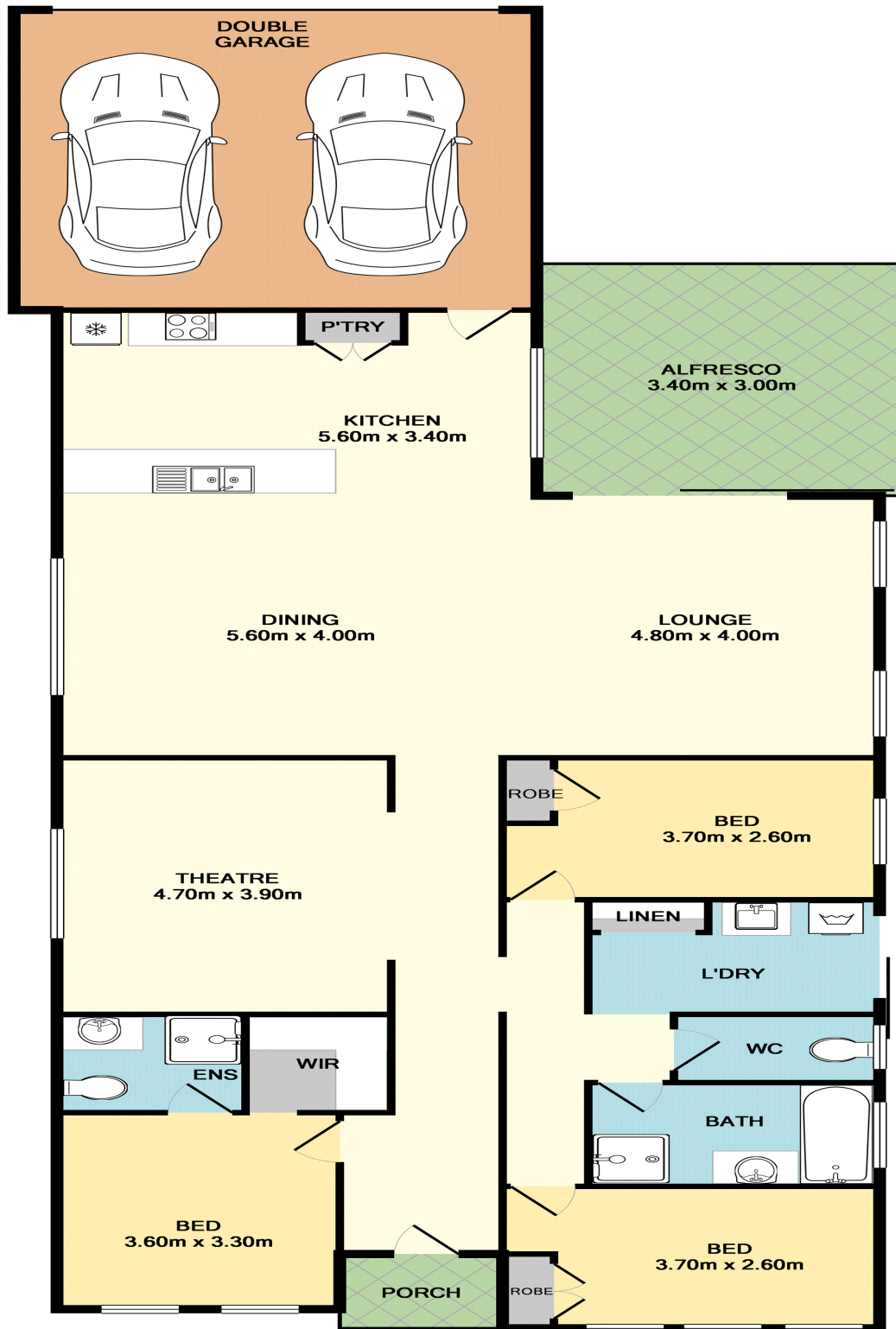
E: denise.lewis@smileelite.com

Air Conditioning
Ducted Cooling
Ducted Heating

Land size
400.00 Sqm



Denise Lewis
Principal - Lewis Holloway Property
M: 0412 877 613
E: denise.lewis@smileelite.com



TOTAL APPROX. FLOOR AREA 195.3 SQ.M. (2102 SQ.FT.)

Whilst every attempt has been made to ensure the accuracy of the floor plan contained here, measurements of doors, windows, rooms and any other items are approximate and no responsibility is taken for any error, omission, or mis-statement. This plan is for illustrative purposes only and should be used as such by any prospective purchaser. The services, systems and appliances shown have not been tested and no guarantee as to their operability or efficiency can be given
 Made with Metropix ©2018

Scale in metres. Dimensions are approximate. All information contained herein is gathered from sources we believe to be reliable, however we cannot guarantee its accuracy and interested persons should rely on their own enquiries.