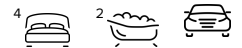




**8 Chollerton Way, MADORA BAY
FOR SALE**



4 bedroom house

Welcome to 8 Chollerton Way, Madora Bay!

Luxurious family living moments to the water's edge

4/5 bed, 2 bath, 4 parking

This luxurious modern home is immaculately presented inside and out, and boasts relaxed alfresco living beside the large in-ground pool to suit the growing family. Soaring nine-foot ceilings throughout add to the generous sense of light and space, and it is ideally set a short walk to the pristine waters of Madora Bay Beach.

- Expansive open-plan living/dining/games area with premium gloss floor tiles
- Spacious home theatre features recessed ceiling and a chic modern chandelier
- High-end designer kitchen will impress with stone bench tops and large butler's pantry
- Kitchen also features a European appliances package & Scullery that will delight the home chef
- Large alfresco patio overlooks paved pool area and lawn
- Large 9.2x4.4m kidney-shaped in-ground pool with solar heating and solar blanket
- Stylish master bedroom features a striking open ensuite with large twin vanity
- Carpet and mirrored built-in robes to generous second, third and fourth bedrooms
- Separate home office could easily be used as a fifth bedroom
- Immaculate family-sized main bathroom with frameless glass shower and separate bath
- 16kw ducted reverse-cycle a/c, plus designer lighting and smart wiring throughout
- Elegant plantation shutters and quality curtains and blinds throughout
- Perimeter high-definition CCTV security system with hard drive and monitor
- Over-sized double lock-up garage with high ceiling and in-roof storage
- Off-street parking for an additional two cars on double driveway

Don't miss this opportunity to secure a relaxed sea-change lifestyle beside the sparkling Indian Ocean in sought-after Madora Bay. Spectacular San Remo Beach, Madora Foreshore, quality schools and Lakelands Village shopping centre are all nearby, and it's a short drive to all major amenities in Mandurah town centre.

Features



Denise Lewis

Principal - Lewis Holloway Property

M: 0412 877 613

E: denise.lewis@smileelite.com

Built-In Robes
1 Ensuite
2 Living Areas
Study
2 Carports
Fully Fenced
Inground Pool
Outside Entertaining Area
Remote Garage Door
Secure Parking
Air Conditioning
Ducted Cooling
Ducted Heating

Land size

694.00 Sqm

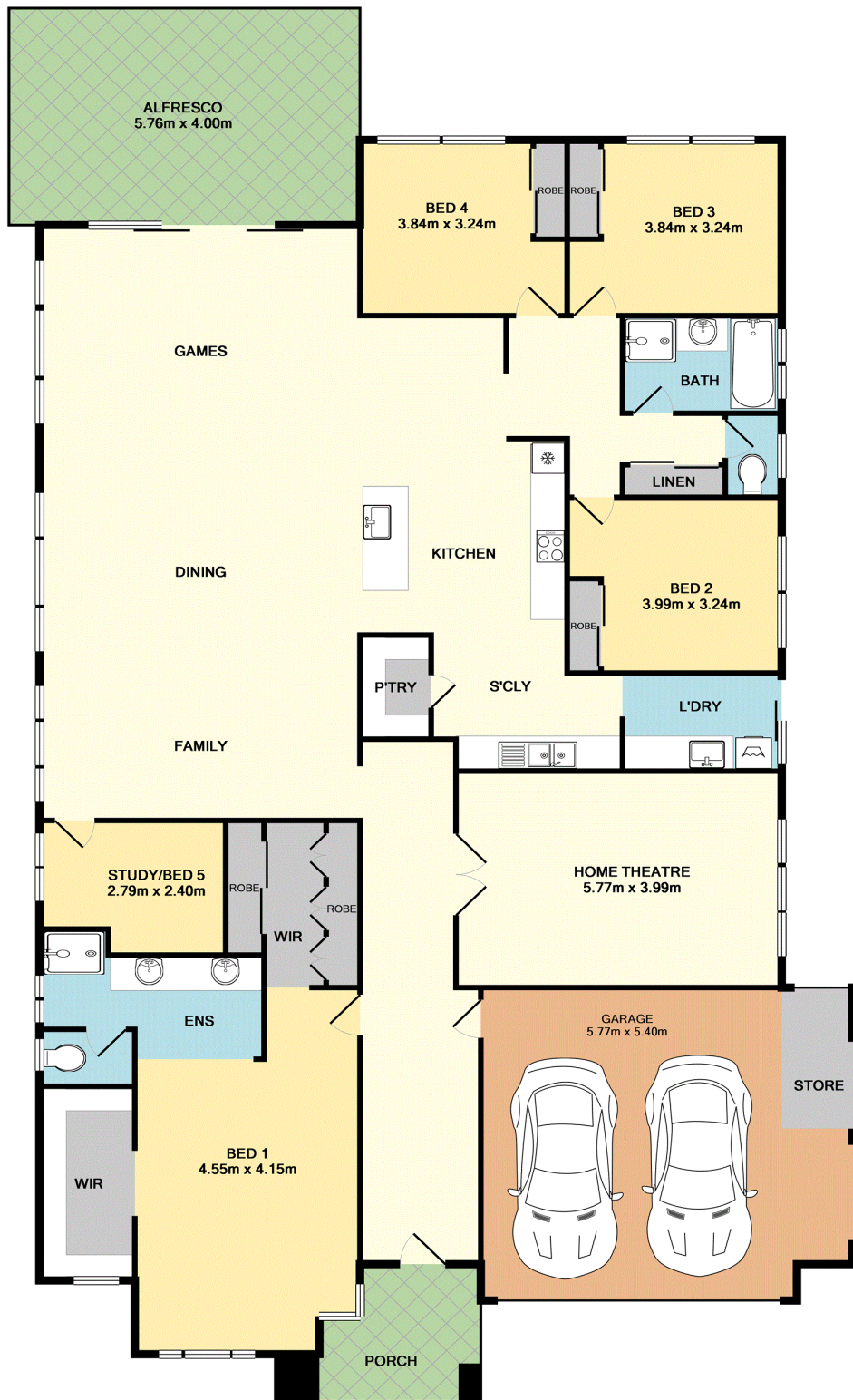


Denise Lewis

Principal - Lewis Holloway Property

M: 0412 877 613

E: denise.lewis@smileelite.com



TOTAL APPROX. FLOOR AREA 280.8 SQ.M. (3023 SQ.FT.)

Whilst every attempt has been made to ensure the accuracy of the floor plan contained here, measurements of doors, windows, rooms and any other items are approximate and no responsibility is taken for any error, omission, or mis-statement. This plan is for illustrative purposes only and should be used as such by any prospective purchaser. The services, systems and appliances shown have not been tested and no guarantee as to their operability or efficiency can be given
Made with Metropix ©2018

Scale in metres. Dimensions are approximate. All information contained herein is gathered from sources we believe to be reliable, however we cannot guarantee its accuracy and interested persons should rely on their own enquiries.