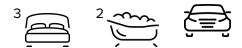




### 4/124 Oats Street, CARLISLE FOR SALE



#### 3 bedroom unit

Welcome to 4/124 Oats Street, Carlisle!

3 bed, 2 bath, 2 parking

Quality three-bedroom villa minutes to the city

Secure spacious modern living in an in-demand inner-city location with this quality brick villa that features separate family and living/dining areas plus three generous bedrooms. The private courtyard is paved for low-maintenance alfresco living and a security system makes it an ideal lock-and-leave residence.

- Enter into the spacious family room at front that features floating timber flooring
- Separate living/dining area at rear – also with floating floor – opens to paved courtyard
- Quality modern kitchen features a gas cooktop, s/steel appliances and walk-in pantry
- Master bed with walk-in robe and ensuite is privately located off the family room at front
- Second and third bedrooms join the family-sized main bathroom in a separate wing
- Built-in robe to second bedroom; walk-in robe to third bedroom; carpet to both
- Well-presented main bathroom features a bath, shower and separate toilet
- Ducted air conditioning throughout; lock-and-leave security system; low strata fees
- Well-equipped internal laundry with outdoor access; large built-in linen cupboard
- Secure double garage with shopper's entry and storeroom with courtyard access

Walk to bus stops, parks and Oats Street train station for a short commute to Perth CBD from this convenient central location. It's also just moments to Swansea Street Markets, major shopping centres and cinemas, restaurants and cafes, and your choice of quality schools.

#### Features

Alarm System  
Built-In Robes  
1 Ensuite  
1 Living Area  
2 Carports  
Courtyard  
Fully Fenced



**Denise Lewis**

Principal - Lewis Holloway Property

**M:** 0412 877 613

**E:** denise.lewis@smileelite.com

Outside Entertaining Area  
Remote Garage Door  
Secure Parking  
Air Conditioning  
Ducted Cooling

**Land size**

230.00 Sqm

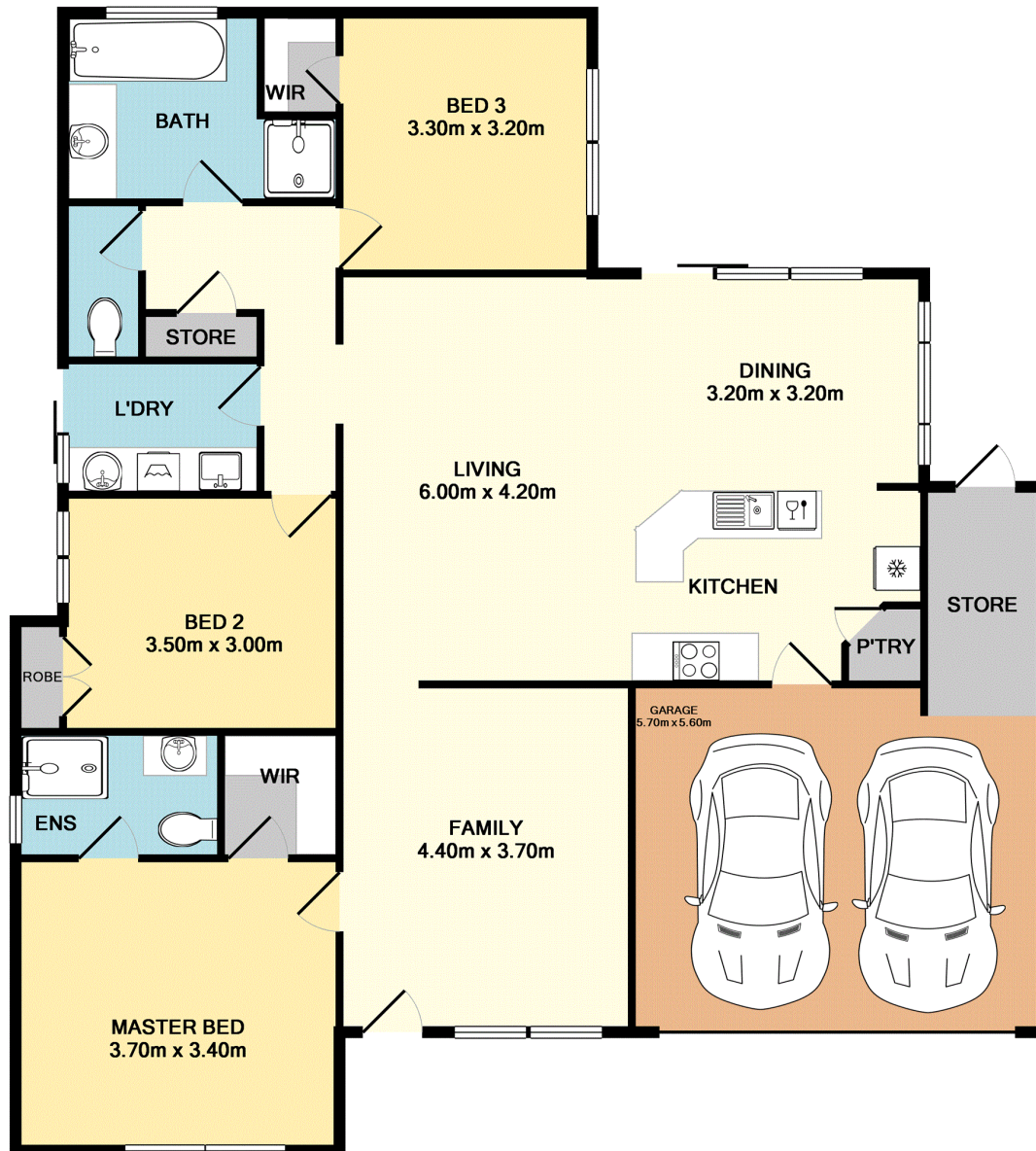


**Denise Lewis**

Principal - Lewis Holloway Property

**M:** 0412 877 613

**E:** [denise.lewis@smileelite.com](mailto:denise.lewis@smileelite.com)



TOTAL APPROX. FLOOR AREA 146.4 SQ.M. (1576 SQ.FT.)

Whilst every attempt has been made to ensure the accuracy of the floor plan contained here, measurements of doors, windows, rooms and any other items are approximate and no responsibility is taken for any error, omission, or mis-statement. This plan is for illustrative purposes only and should be used as such by any prospective purchaser. The services, systems and appliances shown have not been tested and no guarantee as to their operability or efficiency can be given  
 Made with Metropix ©2018

Scale in metres. Dimensions are approximate. All information contained herein is gathered from sources we believe to be reliable, however we cannot guarantee its accuracy and interested persons should rely on their own enquiries.