



76 Challenger Road, MADORA BAY
FOR SALE



4 bedroom house

Welcome to 76 Challenger Road, Madora Bay!

BRAND NEW GEMMIL HOME WITH QUALITY FIXTURES AND FITTINGS.
Furniture Package Available As Separate Negotiation.

Immaculate beachside home offers a contemporary coastal lifestyle!

4 bed, 2 bath, 2 parking

From its charming façade to the spacious alfresco patio in the generous private backyard, this immaculately presented four-bedroom home will impress with stylish contemporary living in a prime coastal location. It is ideally set easy walking distance to spectacular San Remo Beach and is ready for you to move your growing family straight in with absolutely no work to do.

- High ceilings throughout, spacious open-plan living/dining area features premium gloss floor tiles and opens out to the patio
- Separate carpeted home theatre plus additional private study space add more living space
- High-end designer kitchen features white stone bench tops and stylish pendant lighting
- Gas cooktop, stainless steel appliances and scullery with walk-in pantry also to the kitchen
- The large master bedroom is privately located off the wide entry hall at the front of the home
- Master features two walk-in robes and luxury ensuite with twin vanity and large shower
- Built-in robes to generous second and third bedrooms; walk-in robe to the fourth bedroom
- Second bed offers access to the two-way main bathroom with bath, shower and large vanity
- Large integrated patio overlooks manicured corner lawn in the fully fenced backyard
- Well-equipped internal laundry with large built-in linen cupboard and outdoor access
- Rendered double lock-up garage, plus large double driveway with gated/paved side access

You'll love this incredible coastal location that is set just one block back from the ocean and easy walking distance to Madora Bay Bea. It's also steps to bus stops and parks, close to schools, and a short drive to Meadow Springs Shopping Centre. All major amenities including a train station are also available in neighbouring Mandurah.

Features

Built-In Robes



Denise Lewis

Principal - Lewis Holloway Property

M: 0412 877 613

E: denise.lewis@smileelite.com

1 Ensuite
2 Living Areas
Study
2 Carports
Fully Fenced
Outside Entertaining Area
Remote Garage Door
Secure Parking
Air Conditioning
Ducted Cooling
Ducted Heating

Land size

628.00 Sqm

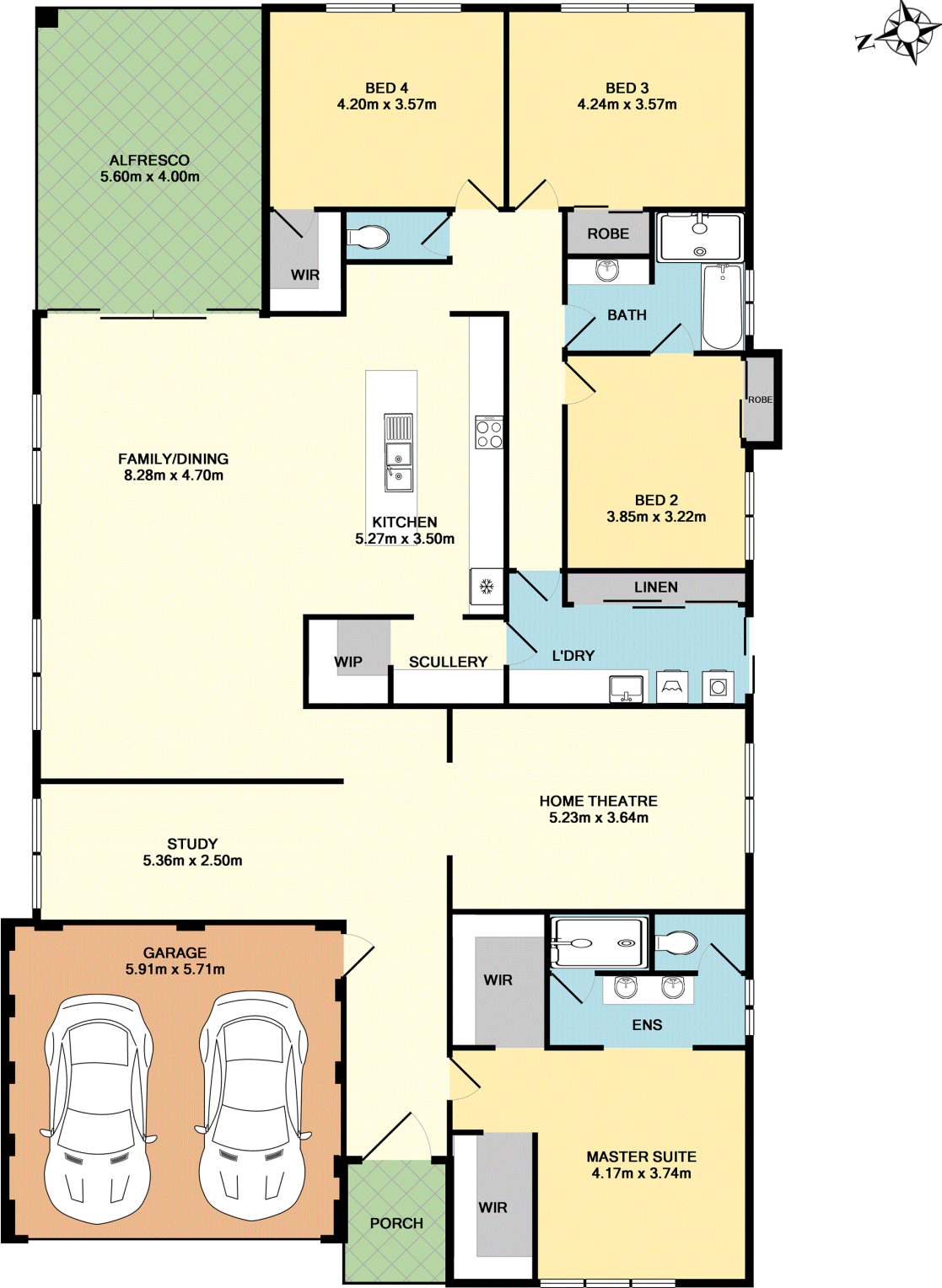


Denise Lewis

Principal - Lewis Holloway Property

M: 0412 877 613

E: denise.lewis@smileelite.com



TOTAL APPROX. FLOOR AREA 243.5 SQ.M. (2622 SQ.FT.)
Whilst every attempt has been made to ensure the accuracy of the floor plan contained here, measurements of doors, windows, rooms and any other items are approximate and no responsibility is taken for any error, omission, or mis-statement. This plan is for illustrative purposes only and should be used as such by any prospective purchaser. The services, systems and appliances shown have not been tested and no guarantee as to their operability or efficiency can be given
Made with Metropix ©2018

Scale in metres. Dimensions are approximate. All information contained herein is gathered from sources we believe to be reliable, however we cannot guarantee its accuracy and interested persons should rely on their own enquiries.