



### 32/13 Cantonment Street, FREMANTLE FOR SALE



#### 1 bedroom apartment

Welcome to 32/13 Cantonment Street, Fremantle!

New York-style warehouse apartment in the heart of Fremantle!

1 bed, 1 bath, 1 parking

This stunning New York-style warehouse conversion will impress all comers with soaring ceilings, abundant natural light and a bright paved courtyard at front. It is ideally set in the sought-after Woodson's Complex in the heart of Fremantle CBD with trendy cafes and restaurants on your doorstep.

- Timber flooring, soaring raked ceiling and split-system a/c to bright living/dining area
- Neat galley-style kitchen with electric cooktop, built-in oven and dishwasher
- Master bedroom also with timber floor, plus ceiling fan and huge mirrored built-in robe
- Light-filled main bathroom is well presented with shower over bath and separate laundry
- Bright paved front courtyard/barbecue area adds plenty of wow factor
- Parking for one car in security complex, plus storage facility on title

Walk to Fremantle's best cafes, restaurants and bars from this stylish inner-city pad. It's also moments to supermarkets, cinemas, The University of Notre Dame, Bathers Beach, and Fremantle train station for an easy commute to Perth CBD.

#### Features

1 Carport

#### Land size

68.00 Sqm



**Jan Holloway**

Principal - Lewis Holloway Property

**M:** 0499 955 442

**E:** [jan.holloway@smileelite.com](mailto:jan.holloway@smileelite.com)

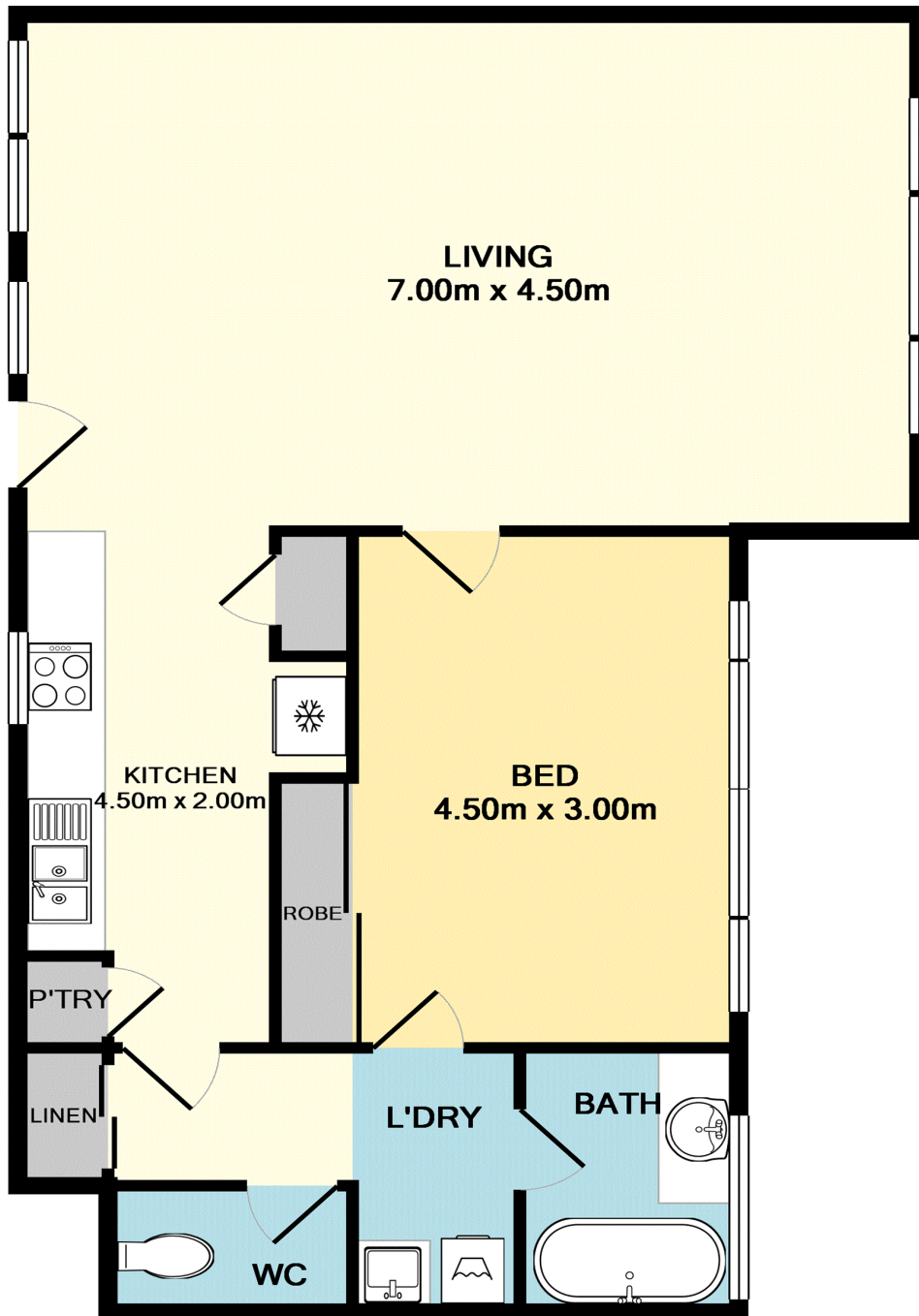


**Jan Holloway**

Principal - Lewis Holloway Property

**M:** 0499 955 442

**E:** [jan.holloway@smileelite.com](mailto:jan.holloway@smileelite.com)



TOTAL APPROX. FLOOR AREA 68.8 SQ.M. (741 SQ.FT.)

Whilst every attempt has been made to ensure the accuracy of the floor plan contained here, measurements of doors, windows, rooms and any other items are approximate and no responsibility is taken for any error, omission, or mis-statement. This plan is for illustrative purposes only and should be used as such by any prospective purchaser. The services, systems and appliances shown have not been tested and no guarantee as to their operability or efficiency can be given

Made with Metropix ©2018

Scale in metres. Dimensions are approximate. All information contained herein is gathered from sources we believe to be reliable, however we cannot guarantee its accuracy and interested persons should rely on their own enquiries.