



11 Portrush Parade, MEADOW SPRINGS FOR SALE

4 bedroom house

Welcome to 11 Portrush Parade, Meadow Springs!

4 bed, 2 bath, 2 parking

Spacious family living in quality modern home.

This spacious four-bedroom home is ideal for the growing family and showcases a bright elevated outlook. It is set on a generous 714sqm block with side access, and features a spacious open-plan living/dining area plus a separate games room and a large alfresco patio for easy entertaining. Stunning floating floors star in the low-maintenance living areas, and there are walk-in robes to three of four generous bedrooms.

- Enter via the covered front portico and into the wide reception hall with floating floor
- Large light-filled games room or home theatre is located off the entry hall on your right
- Continue into the spacious open-plan living/dining area with slow-combustion fireplace
- Living/dining area opens onto the large alfresco patio with pergola for easy entertaining
- Large wrap-around kitchen features a gas cooktop, s/steel appliances and walk-in pantry
- King-sized master bedroom features a walk-in robe and modern ensuite with corner shower
- Walk-in robes to second and third beds; fourth bed at front suits use as a home office
- Immaculate family-sized main bathroom with corner shower, bath and separate toilet
- Internal laundry with linen cupboards and outdoor access; evaporative air conditioning
- Low-maintenance backyard with room for a pool (STCA); large front garden
- Double remote garage with side access; extra off-street parking on driveway

The home is conveniently set walking distance to Meadow Springs Reserve, bus stops and Frederick Irwin Anglican School. It's also moments to Meadow Springs Golf and Country Club, Meadow Springs Shopping Centre and Murdoch University (Mandurah Campus), and a short drive to stunning San Remo Beach.

Features

Built-In Robes
1 Ensuite
1 Living Area
Open Fireplace



Jan Holloway

Principal - Lewis Holloway Property

M: 0499 955 442

E: jan.holloway@smileelite.com

Rumpus Room
2 Carports
Fully Fenced
Outside Entertaining Area
Remote Garage Door
Secure Parking
Air Conditioning
Evaporative Cooling

Land size

714.00 Sqm

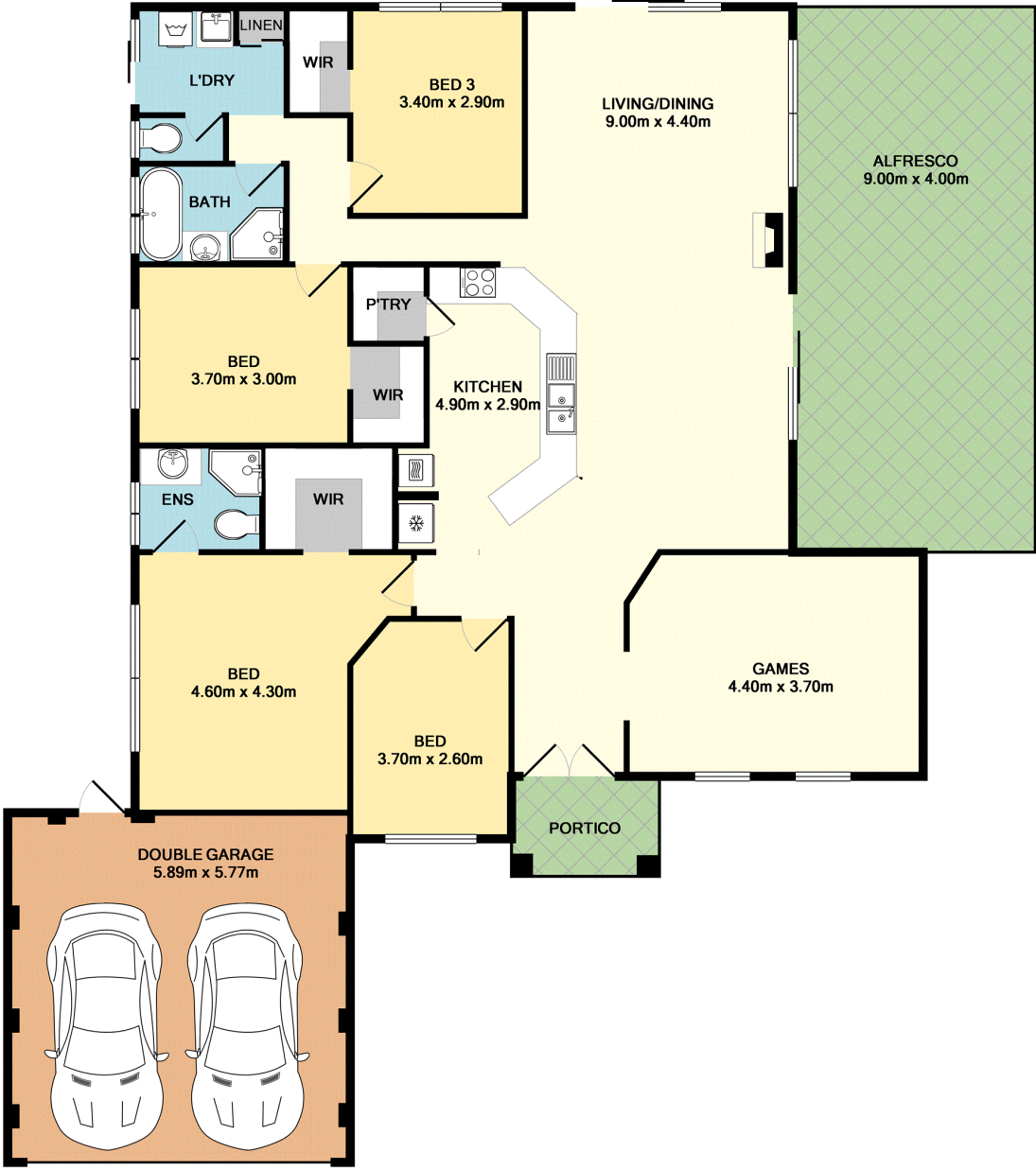


Jan Holloway

Principal - Lewis Holloway Property

M: 0499 955 442

E: jan.holloway@smileelite.com



TOTAL APPROX. FLOOR AREA 182.6 SQ.M. (1966 SQ.FT.)

Whilst every attempt has been made to ensure the accuracy of the floor plan contained here, measurements of doors, windows, rooms and any other items are approximate and no responsibility is taken for any error, omission, or mis-statement. This plan is for illustrative purposes only and should be used as such by any prospective purchaser. The services, systems and appliances shown have not been tested and no guarantee as to their operability or efficiency can be given

Made with Metropix ©2018

Scale in metres. Dimensions are approximate. All information contained herein is gathered from sources we believe to be reliable, however we cannot guarantee its accuracy and interested persons should rely on their own enquiries.