



### 63 Pymmes Junction, BALDIVIS FOR SALE

#### 4 bedroom house

4 bed, 2 bath, 2 parking

Five-star family living in luxury as-new home

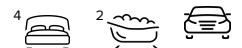
This stunning four-bedroom home is just five years young and was quality built by New Generation Homes to the highest standards. It features an enormous open-plan living/dining area, separate games room, plus home theatre, and the fabulous designer kitchen will delight the home chef. There's also plenty of space for active family living on the generous 688sqm block in an enviable Parkland Heights location.

- Open-plan living/dining area is tiled and features high ceilings and abundant natural light
- A large tiled games room is off the living/dining area through double doors
- Separate carpeted home theatre, plus additional tiled activity space off minor bedrooms
- Five-star designer kitchen with walk-in pantry and 900mm Blanco s/steel oven
- Sleek white stone bench tops, breakfast bar and large gas cooktop also to the kitchen
- Generous master bedroom with adjoining study, parents' retreat or nursery/fifth bedroom
- Luxury ensuite with twin vanity and separate toilet, plus a walk-in robe also to master bed
- Walk-in robe to the good-sized second bedroom; built-in robes to third and fourth bedrooms
- Immaculate main bathroom with frameless glass shower, bath and separate toilet
- Main living/dining area opens to the large alfresco patio for impressive entertaining
- Sparkling in-ground pool starts in the fenced backyard with double side access
- Internal laundry with outdoor access; walk-in linen cupboard/storeroom off activity space
- Ducted reverse-cycle air conditioning throughout ensures your year-around comfort
- Double lock-up garage with internal entry; extra off-street parking on driveway

This large family residence is surrounded by other quality new-build homes in sought-after Parkland Heights. Walk to bus stops, a park and pharmacy from your doorstep, and it's just moments to Tuart Rise Primary School for a convenient family living. Stockland Baldivis Shops,

#### Features

Built-In Robes  
Dishwasher  
1 Ensuite  
2 Living Areas



**Denise Lewis**

Principal - Lewis Holloway Property

**M:** 0412 877 613

**E:** [denise.lewis@smileelite.com](mailto:denise.lewis@smileelite.com)

Rumpus Room  
Study  
2 Carports  
Fully Fenced  
Inground Pool  
Outside Entertaining Area  
Remote Garage Door  
Secure Parking  
Air Conditioning  
Ducted Heating

**Land size**

658.00 Sqm

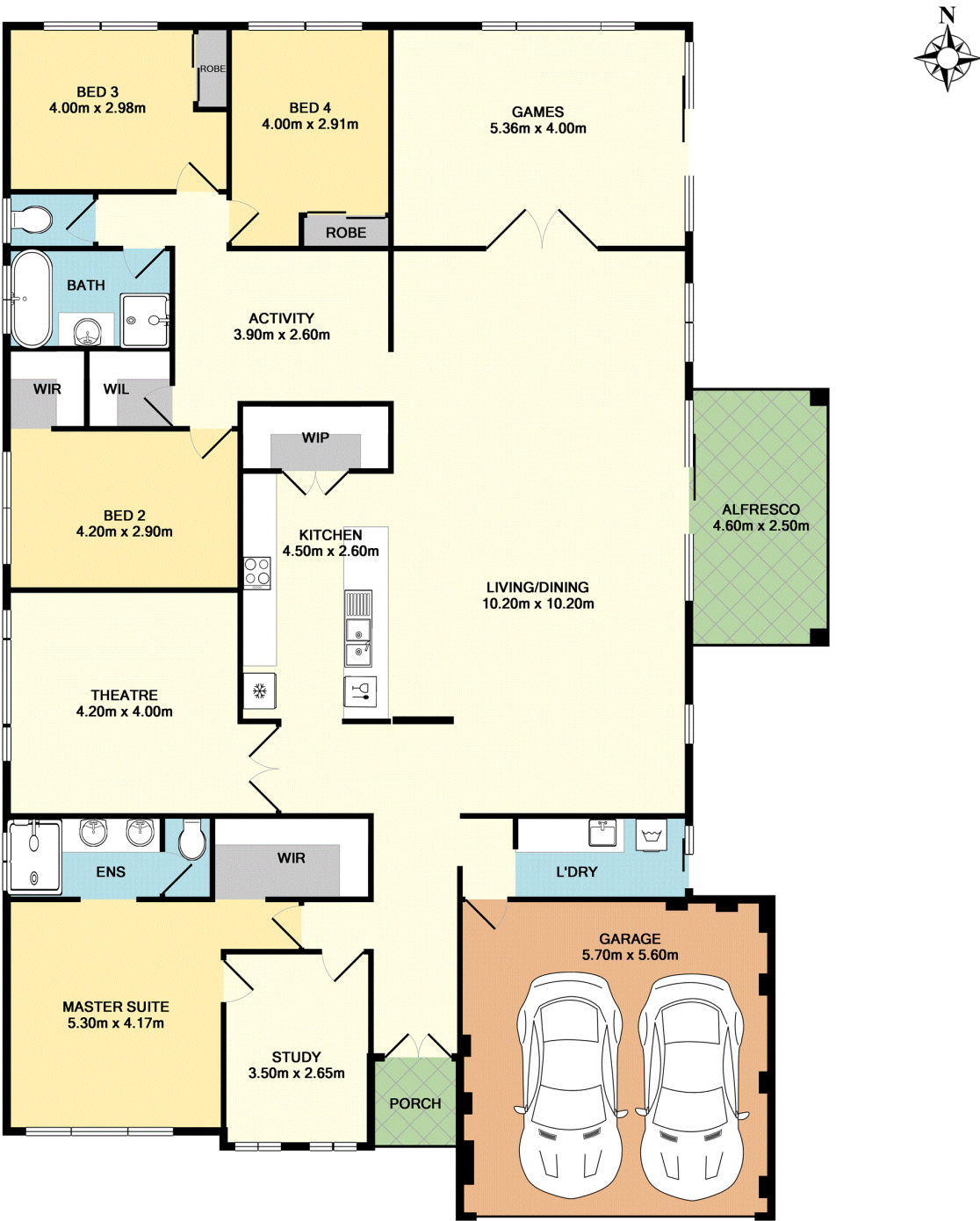


**Denise Lewis**

Principal - Lewis Holloway Property

**M:** 0412 877 613

**E:** [denise.lewis@smileelite.com](mailto:denise.lewis@smileelite.com)



TOTAL APPROX. FLOOR AREA 256.2 SQ.M. (2758 SQ.FT.)

Whilst every attempt has been made to ensure the accuracy of the floor plan contained here, measurements of doors, windows, rooms and any other items are approximate and no responsibility is taken for any error, omission, or mis-statement. This plan is for illustrative purposes only and should be used as such by any prospective purchaser. The services, systems and appliances shown have not been tested and no guarantee as to their operability or efficiency can be given

Made with Metropix ©2018

Scale in metres. Dimensions are approximate. All information contained herein is gathered from sources we believe to be reliable, however we cannot guarantee its accuracy and interested persons should rely on their own enquiries.