



3 Bidgeamia Road, GOLDEN BAY FOR SALE

4 bedroom house

WELCOME TO 3 BIDGEMIA ROAD !

Nestled between the established communities of Secret Harbour and Golden Bay you will find the new Golden Bay Estate. Set in one of its quiet streets you'll find this fantastic 2016 Blueprint family-built home sitting on a larger than most, 560m2 block located opposite a large park with BBQ facilities, children's play equipment and large grassed areas to play cricket or kick a ball.

Boasting 4 bedrooms, two bathrooms and a spacious, low maintenance yard, with a grassed area for children to play, a fire pit for cool autumn nights to melt a marshmallow or two, a huge paved side access which will quite comfortably house a caravan and a small boat plus a 5.5 x 7 powered shed, doesn't get much better!

Additional features include:

- Reverse Cycle A/C
- High ceilings (31c) to kitchen, living, dining and alfresco
- 900mm Westinghouse appliances to kitchen
- 20mm Caesarstone benchtops to kitchen
- Ceramic tiled floors to main
- All bedrooms with built in storage
- LED down lights to living and theatre
- Secure double garage
- Reticulated gardens
- NBN internet connection
- Outdoor entertaining with café blinds
- Fire pit

A home with so much potential close to the future Foreshore Park with direct beach access, proposed beach cafés and the new village centre complete with an IGA, speciality stores, a liquor store, medical centre, childcare centre and within walking distance to primary and senior schools.

Features



Jan Holloway
Principal - Lewis Holloway Property
M: 0499 955 442
E: jan.holloway@smileelite.com

ADSL Available
Built-In Robes
Dishwasher
1 Ensuite
2 Living Areas
Fully Fenced
Outside Entertaining Area
Secure Parking
Shed

Land size

560.00 Sqm

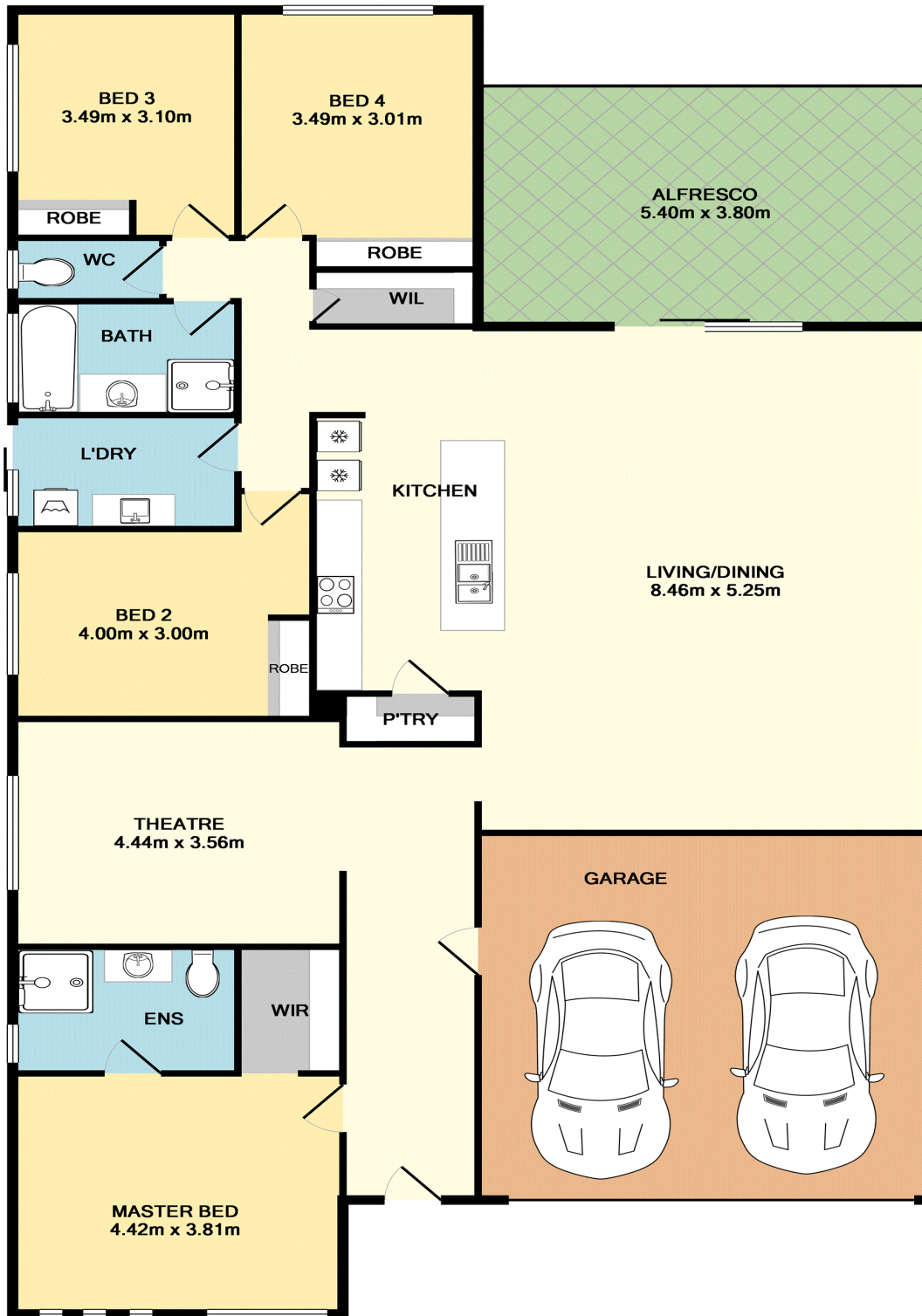


Jan Holloway

Principal - Lewis Holloway Property

M: 0499 955 442

E: jan.holloway@smileelite.com



TOTAL APPROX. FLOOR AREA 207.1 SQ.M. (2229 SQ.FT.)

Whilst every attempt has been made to ensure the accuracy of the floor plan contained here, measurements of doors, windows, rooms and any other items are approximate and no responsibility is taken for any error, omission, or mis-statement. This plan is for illustrative purposes only and should be used as such by any prospective purchaser. The services, systems and appliances shown have not been tested and no guarantee as to their operability or efficiency can be given
 Made with Metropix ©2019

Scale in metres. Dimensions are approximate. All information contained herein is gathered from sources we believe to be reliable, however we cannot guarantee its accuracy and interested persons should rely on their own enquiries.