



29 Norling Road, HIGH WYCOMBE FOR SALE

3 bedroom house

Don't miss this Golden Opportunity!!!

This immaculate 3 Bed x1.5 Bath x 2 Garage Family home is overlooking Scott Reserve and zoned R20/40 with potential Retain and Build/subdivision*.

791 sqm block with both beautifully presented house and garden showcase both quality and style. Finished to perfection if you are looking for the perfect home where all the work has been done for you and also can be a potentially a great investment with plenty of development options.

Features include:

- Overlooking Scott Reserve.
- 3 Beds, 1 Bath with additional Powder room
- Modern Bathroom and Laundry
- Automatic double Garage
- Country style kitchen overlooking landscaped backyard with stainless steel appliances
- 2 Split system Air Conditioning
- 2 Gas bayonet connection
- Large master bedroom with walk-in robe
- Ceiling fans on all bedrooms
- Spacious vaulted ceiling living/dining with access to generous outdoor patio entertaining area
- Security screens throughout
- Fully landscaped garden
- Garden sheds
- Built in 1990
- Gas hot water system

The location is ideal, close to several schools, High Wycombe Village Shopping Centre, Library, IGA, and public transport.

It's time for the current owners to move on, so come and discover this absolute find for yourself. Don't miss out- it will be sold!

Request a viewing, give feedback and make offers 24/7 through Purplebricks or Contact Ricco



Jan Holloway

Principal - Lewis Holloway Property

M: 0499 955 442

E: jan.holloway@smileelite.com

Agustandra to arrange an inspection on 0426 895 558 before it is gone.

*Subject to WAPC/COUNCIL approval

Features

Built-In Robes
2 Carports
Courtyard
Fully Fenced
Outside Entertaining Area
Remote Garage Door
Secure Parking
Shed

Land size

791.00 Sqm

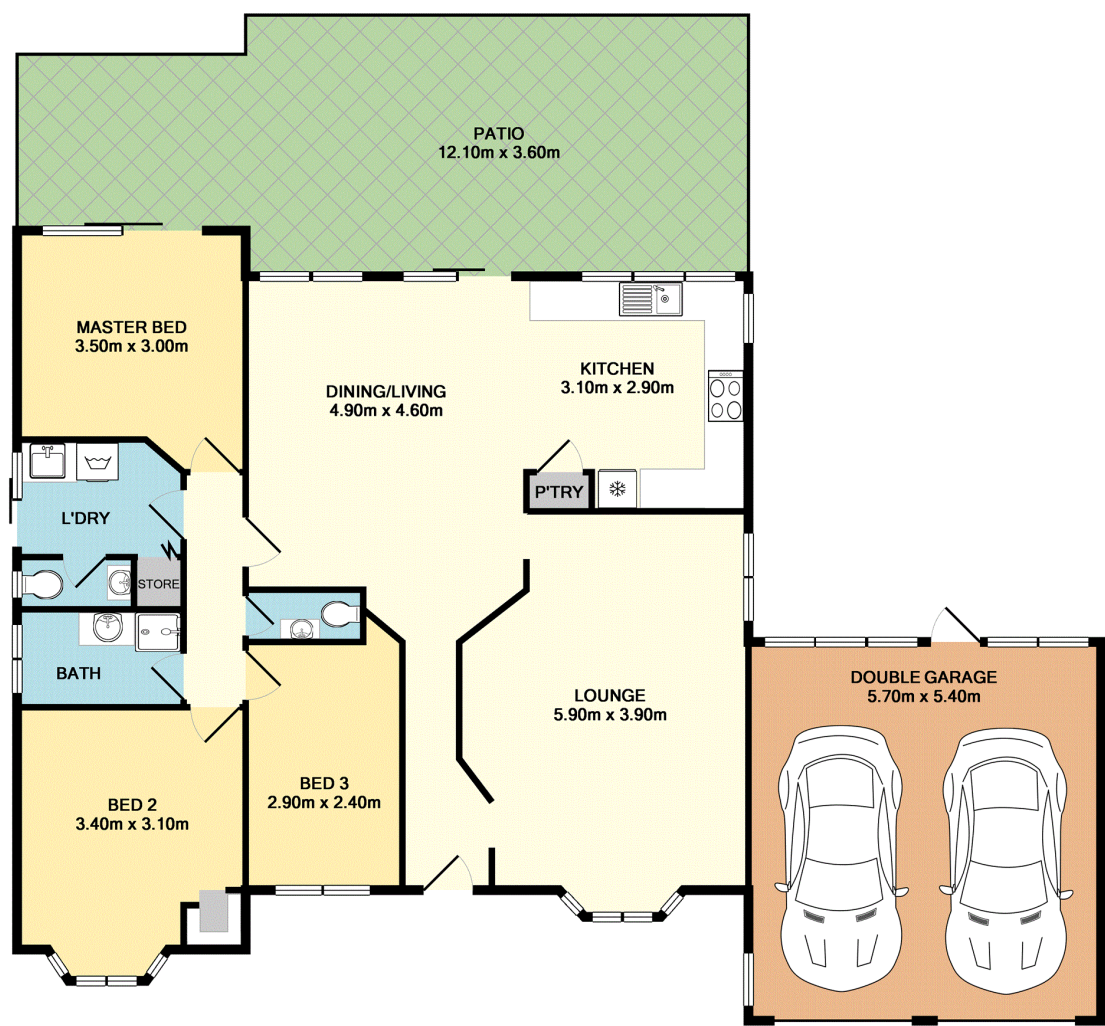


Jan Holloway

Principal - Lewis Holloway Property

M: 0499 955 442

E: jan.holloway@smileelite.com



TOTAL APPROX. FLOOR AREA 143.6 SQ.M. (1546 SQ.FT.)

Whilst every attempt has been made to ensure the accuracy of the floor plan contained here, measurements of doors, windows, rooms and any other items are approximate and no responsibility is taken for any error, omission, or mis-statement. This plan is for illustrative purposes only and should be used as such by any prospective purchaser. The services, systems and appliances shown have not been tested and no guarantee as to their operability or efficiency can be given
Made with Metropix ©2019

Scale in metres. Dimensions are approximate. All information contained herein is gathered from sources we believe to be reliable, however we cannot guarantee its accuracy and interested persons should rely on their own enquiries.