



### 41 Lawson Street, BENTLEY FOR SALE



#### 4 bedroom house

GREAT LOCATION HOME CLOSE TO CURTIN UNIVERSITY WITH PUBLIC TRANSPORT RIGHT ON YOUR DOORSTEP.

If you are looking for a PERFECT first/investment home in a FANTASTIC LOCATION close to Curtin University and Public Transport, this 4 Bed 2 Bath 2 Garage Home is A MUST SEE as this won't last long on the market.

This family home boasts four great sized bedrooms, two well-appointed bathrooms, lounge area, open plan living/dining/kitchen equipped stainless steel gas cooktop & electric oven, a built-in pantry and elegant downlights throughout, a ducted air-conditioning system, roller shutters, full security screens, alarm system and many other features.

The living area is spacious with easy sliding door access to the outdoor entertainment area and low maintenance backyard. So you can have a Lock and Leave Lifestyle.

#### Why Buy Me?

- \* 422 sqm Green Title Block
- \* Bus stop right on your doorstep
- \* 4 Great Sized Bedrooms, 2 Bathrooms
- \* Four spacious bedrooms all featuring robes
- \* Double lock up garage and security Gate
- \* Open plan living/dining/kitchen equipped with stainless steel gas cooktop, a built-in pantry
- \* Elegant downlights throughout.
- \* Ducted reverse cycle air-conditioning system
- \* Roller Shutters
- \* Full security screens & alarm system

Conveniently located close to Curtin University, Waterford Plaza, Carousel Shopping Centre, Canning River, parks, public transport and all of the daily amenities one could require. Location cannot be more ideal!

Request a viewing, give feedback and make offers 24/7 through Purplebricks or Contact Ricco



**Jan Holloway**

Principal - Lewis Holloway Property

**M:** 0499 955 442

**E:** [jan.holloway@smileelite.com](mailto:jan.holloway@smileelite.com)

Agustandra to arrange an inspection on 0426 895 558 before it is gone.

**Features**

Alarm System  
Built-In Robes  
1 Ensuite  
Floorboards  
1 Living Area  
Fully Fenced  
Outside Entertaining Area  
Remote Garage Door  
Secure Parking  
Shed  
Ducted Cooling  
Ducted Heating

**Land size**

422.00 Sqm

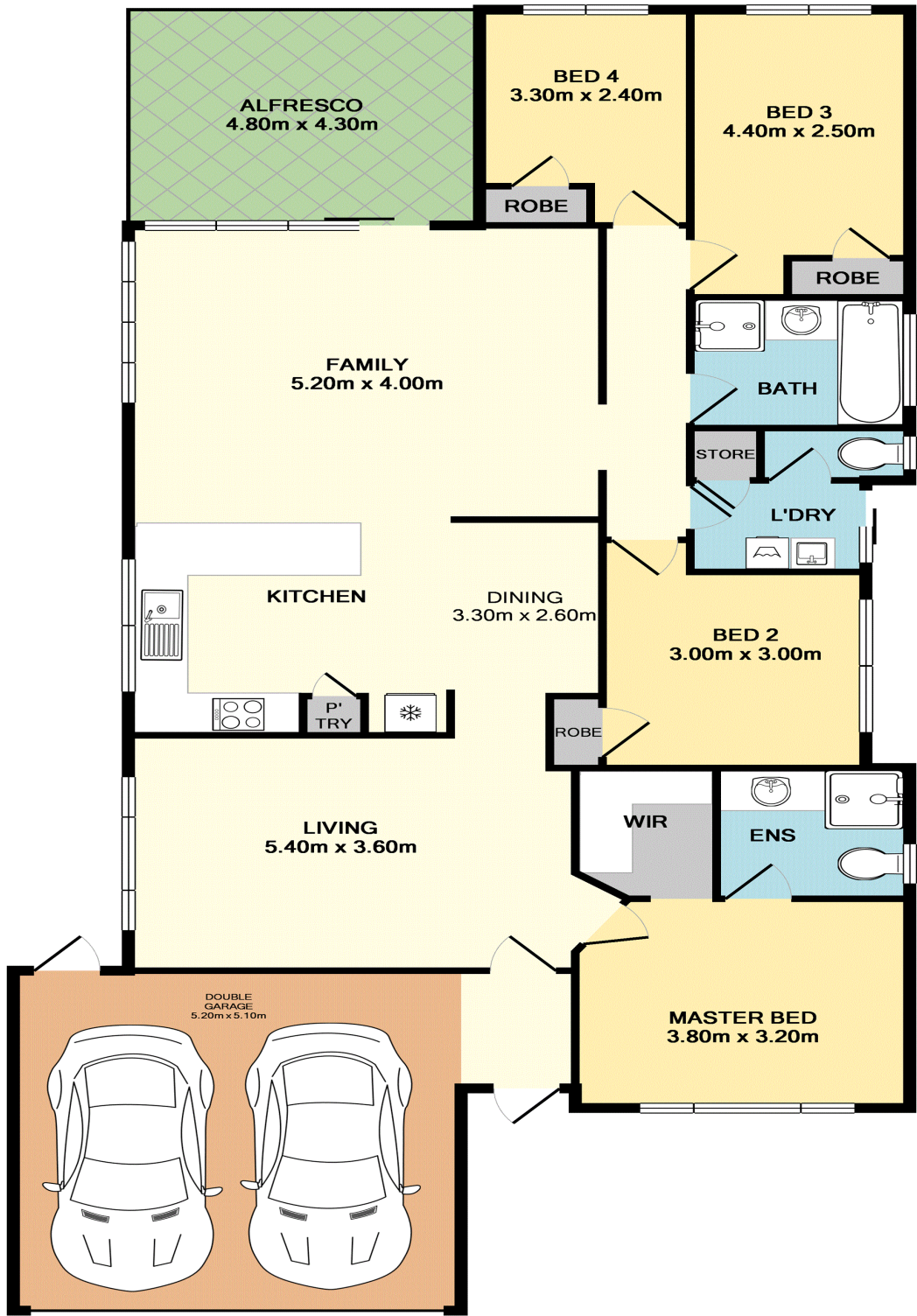


**Jan Holloway**

Principal - Lewis Holloway Property

**M:** 0499 955 442

**E:** [jan.holloway@smileelite.com](mailto:jan.holloway@smileelite.com)



TOTAL APPROX. FLOOR AREA 152.3 SQ.M. (1639 SQ.FT.)

Whilst every attempt has been made to ensure the accuracy of the floor plan contained here, measurements of doors, windows, rooms and any other items are approximate and no responsibility is taken for any error, omission, or mis-statement. This plan is for illustrative purposes only and should be used as such by any prospective purchaser. The services, systems and appliances shown have not been tested and no guarantee as to their operability or efficiency can be given

Made with Metropix ©2019