



## 17 Whitehaven Avenue, SECRET HARBOUR FOR SALE



**Modern family home, side access available, large corner block**

ANOTHER HOME UNDER OFFER IN RECORD TIME.

THINKING OF SELLING? WE OFFER A FAIR FIXED FEE OF \$8800

What an opportunity! This stunning low-maintenance home offers modern easy-care living at its best, with inviting style and an irresistible lifestyle close to all amenities. The property has been designed with the utmost regard for quality and style with quality Bamboo flooring, plush carpeting and neutral colour schemes adding to the enormous appeal. Energised by natural light throughout, the property also offers the freedom to entertain year-round with ample indoor-outdoor space for the entire family to enjoy.

The living accommodation is perfectly proportioned with great separation and privacy. There is room to accommodate every family event and occasion including a separate lounge to the front and an immense open plan living domain encompassing the modern kitchen, living and dining room. The kitchen offers both form and function with a full range of stainless steel appliances, built-in pantry and an array of intelligent storage options.

- Spacious master bedroom boasting a walk-in wardrobe and ensuite shower room
- Four well-sized family bedrooms ensure plenty of room to live and grow
- Light and bright well-appointed family bathroom with separate bath and shower
- Easy care reticulated gardens
- Large corner block with room for you to add side-access
- Separate lounge at the front of the home
- Central kitchen, large island with a waterfall benchtop, stainless steel appliances and a walk-in pantry
- Open plan living
- Activity/study nook area located near the minor bedrooms
- Split system air-conditioning, perfect for those hot summer months
- Bamboo flooring to the main living areas

Step outside to the under the main roof alfresco dining area with wooden decked flooring and cupboards ready for an outside kitchen. Spacious back yard for the kids to play, room for a future pool or a shed and plenty of available space for a side-access gate to be added to park your boat or caravan.



**Jan Holloway**

Principal - Lewis Holloway Property

**M:** 0499 955 442

**E:** [jan.holloway@smileelite.com](mailto:jan.holloway@smileelite.com)

This property description has been prepared for advertising and marketing purposes only. The information provided is believed to be reliable and accurate. Buyers are encouraged to make their own independent due diligence investigations/enquiries and rely on their own personal judgement regarding the information provided.

**Features**

Built-In Robes

1 Ensuite

2 Open Spaces For Vehicles

Air Conditioning

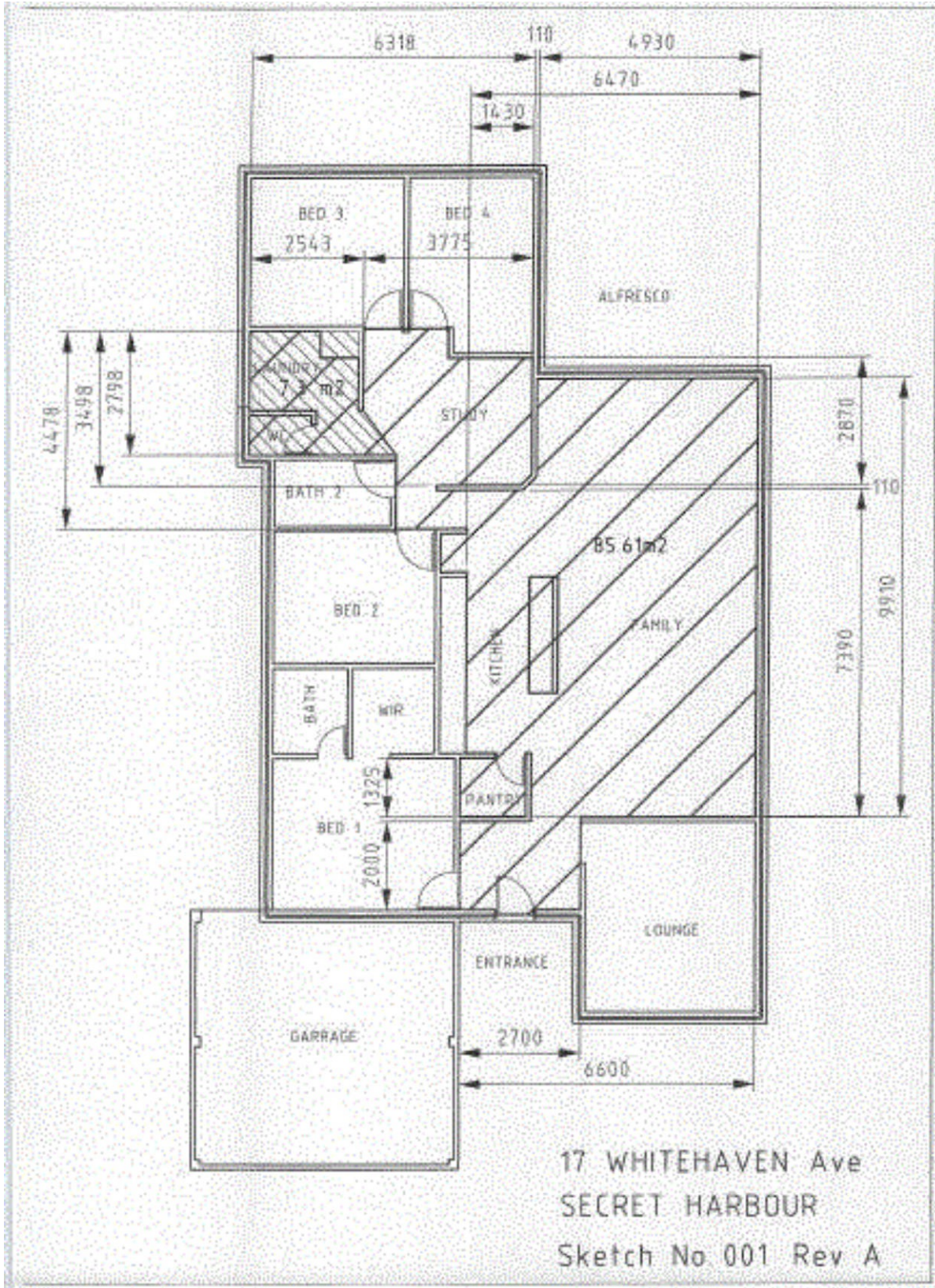
**Land size**

524.00 Sqm

**Jan Holloway**

Principal - Lewis Holloway Property

**M:** 0499 955 442**E:** [jan.holloway@smileelite.com](mailto:jan.holloway@smileelite.com)



Scale in metres. Dimensions are approximate. All information contained herein is gathered from sources we believe to be reliable, however we cannot guarantee its accuracy and interested persons should rely on their own enquiries.