



#### 44 Pineknoll Gardens, MEADOW SPRINGS FOR SALE



**Large family home! Room for all your growing family needs! \*\*\* UNDER OFFER!! FIRST HOME OPEN MULTIPLE OFFERS \*\*\***

This large, family home, built in 2006 by Gemmill Homes is set on a 642m2 block amongst beautiful gardens and in an absolutely fantastic location.

Everything with this home is oversized! On entry you will step into a large bright hallway, the newly painted walls in soft neutral modern colour palate which continues throughout the whole home gives a real sense of space! Crisp and clean! Off to the right a large master bedroom with his and hers walk-in robes, extra-large en-suite with double shower and quality feature tiling.

Also at the front of the home is a great sized theatre room fitted with a projector and projector screen to complete that cinema experience. Grab the popcorn and the kids and relax.

Down the hallway and through the double French doors you will enter the main living area, including the family room, dining room and kitchen. The kitchen is the focal gathering point for the family and central to the living and dining area. It includes a range of extras including a breakfast bar, dishwasher, single oven, gas hob and an abundance of bench and cupboard space. The kitchen, with handy shopper's entrance looks out onto the large under main roof alfresco and beautiful tranquil gardens beyond.

The three further bedrooms are queen in size and close to the main bathroom, which once again features quality tiling and a large shower.

Other features you are sure to love include:

- Evaporative conditioning
- TV points in every bedroom
- Security flyscreen doors to front and laundry
- Security shutters to all windows
- Security alarm and C.C.T.V monitoring system
- Separate laundry with external access to garden
- Larger alfresco area
- 3.8 KW solar system with a 5KW inverter
- Fully reticulated gardens from bore
- NBN



**Jan Holloway**  
Principal - Lewis Holloway Property  
M: 0499 955 442  
E: [jan.holloway@smileelite.com](mailto:jan.holloway@smileelite.com)

- And not forgetting the double side access

In the best location, opposite Oakwood Primary School, walking distance to restaurants, shops, doctors and dentist and a short drive to the Meadow Springs Shopping Centre and Madora Bay Beach, this well presented, 4-bedroom property is going to feel like home. All you have to do is move in and enjoy.

Disclaimer:

This information is provided for general information purposes only and is based on information provided by the Seller and may be subject to change. No warranty or representation is made as to its accuracy and interested parties should place no reliance on it and should make their own independent enquiries.

### Features

2 Toilets  
Built-In Robes  
1 Ensuite  
4 Open Spaces For Vehicles  
Air Conditioning

### Land size

641.00 Sqm



**Jan Holloway**

Principal - Lewis Holloway Property

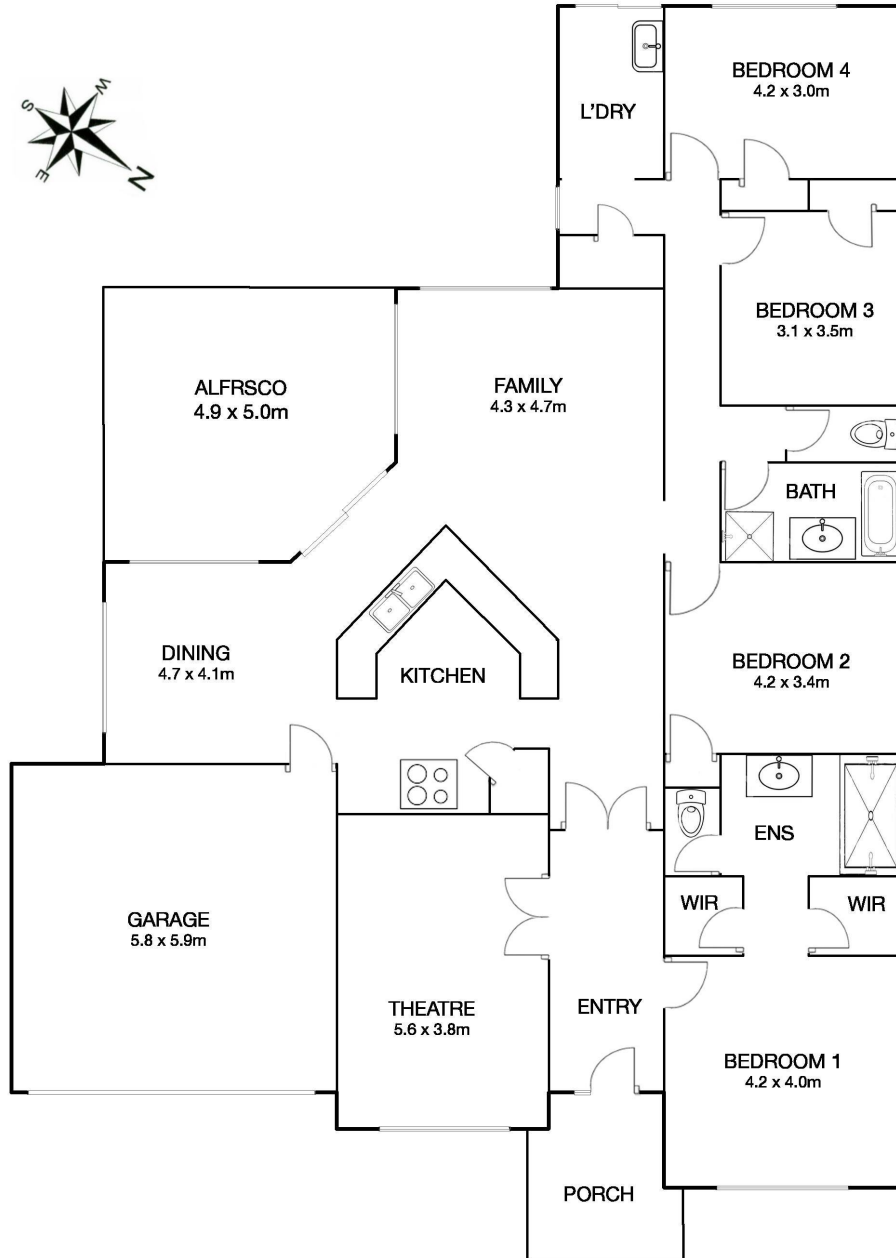
**M:** 0499 955 442

**E:** [jan.holloway@smileelite.com](mailto:jan.holloway@smileelite.com)

# LEWIS HOLLOWAY

PROPERTY

44 Pineknoll Gardens, Meadow Springs/282.48m<sup>2</sup>



Scale in metres. Dimensions are approximate. All information contained herein is gathered from sources we believe to be reliable, however we cannot guarantee its accuracy and interested persons should rely on their own enquiries.