



10 Sienna Grove, KARNUP FOR SALE



Beautiful family home, nothing to do but move in and enjoy

Welcome to the Vista Estate! Denise Lewis from Lewis Holloway Property is proud to welcome 1 Aquamarine Parade, Karnup to the market.

This lovely four-bedroom, two-bathroom family home, boasting 163sqm (approx) of living accommodation. Built by BGC Homes in 2016 and situated on a 445sqm block (approx), approx 1.1km away from Singleton Beach Front, walking distance to lovely parks, shops, schools, and public transport.

Accommodation comprises:

- 5.5kw Solar System Installed in 2020
- 22 Solar Panels
- Modern open plan living and dining, filled with an abundance of natural light
- Master ensuite, boasting large shower, double vanity, and separate toilet
- All generous-sized minor bedrooms with double robes
- Gas bayonet, ready for you to install a gas fire
- Double garage
- NBN Internet
- Quality kitchen with 900mm appliances, stone worktops, ample cupboard storage and worktop space, walk-in pantry with double fridge recess, plus dishwasher
- Theatre room/second living room
- Separate activity room
- Under main roof alfresco, ideal for entertaining
- Low maintenance back yard.

Other features you are sure to love:

- Quality flooring to main areas
- Great street appeal with low maintenance gardens
- High ceilings to living areas
- Feature pendant lighting over kitchen workbench

You definitely won't want to miss out on this one! Property is moving fast. This really needs to



Jan Holloway
Principal - Lewis Holloway Property
M: 0499 955 442
E: jan.holloway@smileelite.com

be seen to appreciate its offering.

Contact Denise on 0412 877 613 for further information and to book into a home open or arrange your personal viewing.

Disclaimer: This information is provided for general information purposes only and is based on information provided by the Seller and may be subject to change. No warranty or representation is made as to its accuracy and interested parties should place no reliance on it and should make their own independent enquiries.

Features

2 Toilets
Built-In Robes
1 Ensuite
2 Living Areas
Study
2 Open Spaces For Vehicles
Air Conditioning

Land size

450.00 Sqm



Jan Holloway

Principal - Lewis Holloway Property

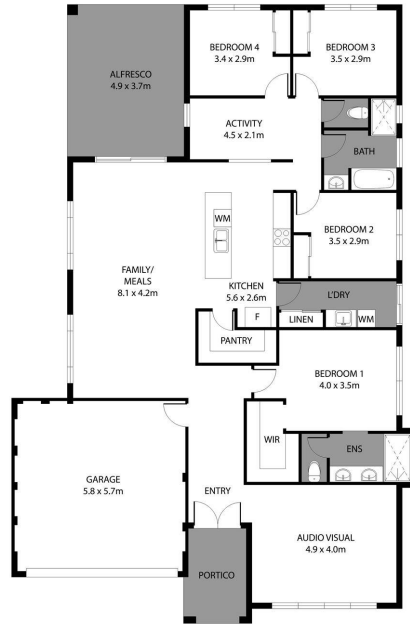
M: 0499 955 442

E: jan.holloway@smileelite.com

LEWIS HOLLOWAY

PROPERTY

10 Sienna Grove Karnup/183.5m²



Scale in metres. Dimensions are approximate. All information contained herein is gathered from sources we believe to be reliable, however we cannot guarantee its accuracy and interested persons should rely on their own enquiries.

POWERED BY SMILE ELITE™
PROUD PARTNERS WITH SYDNEY COUNTRY LIVING

Scale in metres. Dimensions are approximate. All information contained herein is gathered from sources we believe to be reliable, however we cannot guarantee its accuracy and interested persons should rely on their own enquiries.