



### 14B Nerrima Court, COOLOONGUP FOR SALE



#### Motivated Seller!

Lewis Holloway Property is proud to bring to market this cosy, 1981 built duplex, strata titled home (no fees).

Well maintained and set on a large block (approximately 500sqm), boasting some renovations, this home offers a great opportunity for those wishing to get into the property market, invest or downsize and nest.

Comprising of a lounge area, three bedrooms, bathroom, separate laundry and a kitchen/dining area, which transitions effortlessly to the patio/alfresco and large enclosed rear garden beyond. This home is sure to appeal to those who would love a smaller place, with large gardens and space, where a sense of freedom prevails.

With potential side access and large grassed areas front and back, you will have plenty of room for cars, boats, caravans, sheds and much, much more!

Other features that you will love include:

- Good size master with double sliding robes
- Two single sized minor bedrooms one with double sliding robes
- Modern kitchen area
- Modern bathroom units
- Large enclosed rear garden
- Bore on site which will need some maintenance
- Potential side access
- Security doors to front and rear
- Alarmed

Set in a great area just a stone's throw from the local shops, schools, parks and transport routes, this property won't be on the market long. Don't miss out and book your inspection today, call Jan Holloway on 0499 955 442

#### Disclaimer:

This information is provided for general information purposes only and is based on information provided by the Seller and may be subject to change. No warranty or representation is made as



**Jan Holloway**  
Principal - Lewis Holloway Property  
M: 0499 955 442  
E: [jan.holloway@smileelite.com](mailto:jan.holloway@smileelite.com)

to its accuracy and interested parties should place no reliance on it and should make their own independent enquiries.

**Features**

1 Living Area

1 Open Spaces For Vehicle



**Jan Holloway**

Principal - Lewis Holloway Property

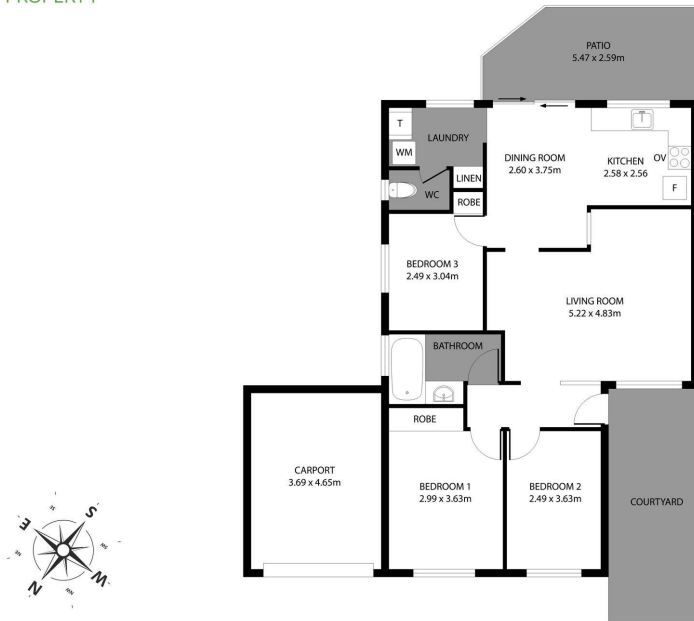
**M:** 0499 955 442

**E:** [jan.holloway@smileelite.com](mailto:jan.holloway@smileelite.com)

# LEWIS HOLLOWAY

PROPERTY

14B Nerrima Court, Cooloogup



Scale in metres. Dimensions are approximate. All information contained herein is gathered from sources we believe to be reliable, however we cannot guarantee its accuracy and interested persons should rely on their own enquiries.

POWERED BY SMILE ELITE™  
PROUD PARTNERS WITH SYDNEY COUNTRY LIVING

Scale in metres. Dimensions are approximate. All information contained herein is gathered from sources we believe to be reliable, however we cannot guarantee its accuracy and interested persons should rely on their own enquiries.