



3 Pattison Ridge, MADORA BAY FOR SALE



HOME OPEN CANCELLED, PROPERTY IS NOW UNDER CONTRACT. QUALIFIED BUYERS WAITING FOR SIMILAR PROPERTIES. CALL ME NOW IF YOU ARE THINKING OF SELLING

HOME OPEN CANCELLED, PROPERTY IS NOW UNDER CONTRACT.

QUALIFIED BUYERS WAITING FOR SIMILAR PROPERTIES. CALL ME NOW IF YOU ARE THINKING OF SELLING

Located on a 700sqm block in Beautiful Madora Bay, this Owner Builder built-in 2013, this magnificent 350sqm under roof is packed full of features, fit for the illustrious owner and has all the bells and whistles that will please the whole family.

No expense has been spared with the finishes of the home, which is perfect for the discerning buyer looking to set themselves apart from the rest.

FORGET THE REST, YOU'VE FOUND THE BEST!!

More reasons you will love this home:

- Stunning four-bedroom, two-bathroom and three car garage property offers multiple living spaces including
- Home theatre
- Open plan living and dining
- Large study, boot room, and good sized laundry
- Master bedroom includes his and hers walk-in robes, luxurious ensuite and double vanities
- King size bedrooms all with double inbuilt robes
- Beautiful chefs kitchen with a massive walk-in pantry, stone tops, dishwasher, stainless steel appliances, ample storage and bench space
- Reverse cycle split system air-conditioning
- High ceilings with feature walls and downlights
- Floating timber floors throughout
- Solar panels
- Massive alfresco perfect for outdoor entertaining
- Beautiful crystal blue swimming pool
- Triple garage with high clearance roller door fitting three cars and plenty of storage space
- Surrounded by established easy care garden beds



Jan Holloway

Principal - Lewis Holloway Property

M: 0499 955 442

E: jan.holloway@smileelite.com

The gardens are extremely low maintenance which caters perfectly to the busy family or lock up and leave buyers. The rear yard is currently fully paved but has so much space that you can easily have enough room for a pool.

Madora Bay is regarded by many as the most liveable land estate in Mandurah primarily because of its beachside location and ease of access to Perth. Located just 10 minutes north of Mandurah, the suburb is fringed by the pristine shoreline of Madora Bay Beach. There is a surf life-saving club, world-class golf course, shopping centre, and quality schools located nearby giving you all of the amenities you need whilst you enjoy a whisper quiet neighbourhood.

Disclaimer: This information is provided for general information purposes only and is based on information provided by the Seller. No warranty or representation is made as to its accuracy and interested parties should place no reliance on it and should make their

Features

3 Toilets
Built-In Robes
1 Ensuite
2 Living Areas
Study
2 Open Spaces For Vehicles
Air Conditioning

Land size

700.00 Sqm



Jan Holloway

Principal - Lewis Holloway Property

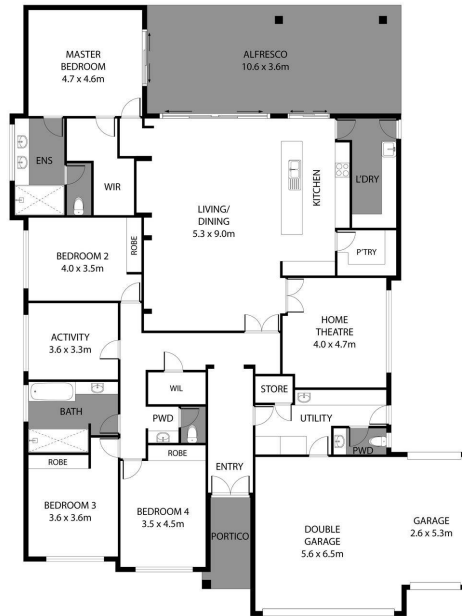
M: 0499 955 442

E: jan.holloway@smileelite.com

LEWIS HOLLOWAY

PROPERTY

3 Pattison Ridge, Madora Bay/396.5m²



Scale in metres. Dimensions are approximate. All information contained herein is gathered from sources we believe to be reliable, however we cannot guarantee its accuracy and interested persons should rely on their own enquiries.

POWERED BY SMILE ELITE™
PROUD PARTNERS WITH SYDNEY COUNTRY LIVING

Scale in metres. Dimensions are approximate. All information contained herein is gathered from sources we believe to be reliable, however we cannot guarantee its accuracy and interested persons should rely on their own enquiries.