



8 Whitechurch Mews, PORT KENNEDY FOR SALE



Rare find, beachside family home on a massive 743sqm block

This four-bedroom, two-bathroom home is situated on a slightly elevated 743sqm block, in a beachside cul-de-sac of Port Kennedy.

Set on a huge 743sqm block, the home is set back from the street giving you a nice long driveway and plenty of parking options, especially handy for the caravan, trailer, or boat! Located in a quiet cul-de-sac with a large parkland at the end of the street, you are a short drive from schooling and shopping options, public transport, and the beautiful Port Kennedy and Warnbro beaches.

Offering unique charm, this family home has been well-loved and cared for by the current owner and offers opportunities for the lucky new owners to make it their own.

Special features include:

- Spacious lounge to the front of the property with a built-in bar
- Large open plan family room with kitchen, casual dining, and additional lounge area
- Master bedroom with ceiling fan, built-in robes, and tiled ensuite
- Three additional double-sized bedrooms, two with built-in robes
- Log burner to the family and dining area

The amazing outdoor area includes:

- Massive patio area offering opportunities galore to adapt to your family's needs
- Workshop, smaller garden shed
- Fantastic space for the largest of families to enjoy, plenty of room for a pool subject to council approval
- Lawns all reticulated from the bore
- Security camera system

In an excellent location with parklands at the end of the cul-de-sac, close to great shopping, schools, transport links, and a short drive to beautiful beaches, this home will not last long in today's market.

For all inquiries please contact Denise Lewis on 0412 877 613.

Disclaimer: All information contained herein is obtained from property owners or third-party



Jan Holloway
Principal - Lewis Holloway Property
M: 0499 955 442
E: jan.holloway@smileelite.com

sources which we believe are reliable. We have no reason to doubt its accuracy, however, we cannot guarantee it. All interested person/s should rely on their own inquiries.

Features

2 Toilets
Built-In Robes
1 Ensuite
2 Living Areas
1 Carport
2 Open Spaces For Vehicles

Land size

743.00 Sqm



Jan Holloway

Principal - Lewis Holloway Property

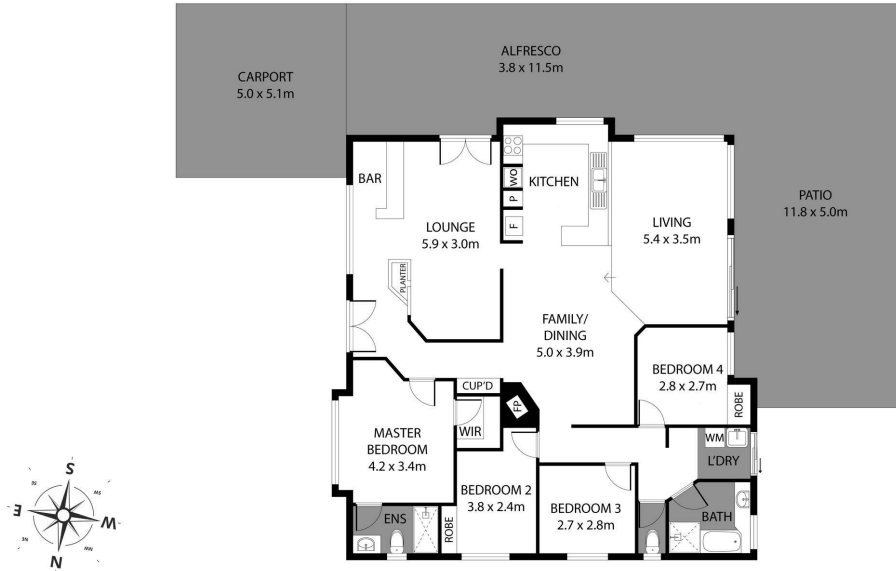
M: 0499 955 442

E: jan.holloway@smileelite.com

LEWIS HOLLOWAY

PROPERTY

8 Whitechurch Mews, Port Kennedy



Scale in metres. Dimensions are approximate. All information contained herein is gathered from sources we believe to be reliable, however we cannot guarantee its accuracy and interested persons should rely on their own enquiries.

POWERED BY SMILE ELITE™
PROUD PARTNERS WITH SYDNEY COUNTRY LIVING

Scale in metres. Dimensions are approximate. All information contained herein is gathered from sources we believe to be reliable, however we cannot guarantee its accuracy and interested persons should rely on their own enquiries.