



17 Arpenteur Drive, BALDIVIS FOR SALE

4 bedroom house

Huge Potential!

17 ARPENTEUR DRIVE, BALDIVIS

We are welcoming all private inspections, contact Jan Holloway on 0499 955 442 to book a time to view

This large family home is ideally situated on a large 707sqm block. With some modernisations this property would suffice all your growing family's needs..

Comprising a large master suite and three additional good-sized bedrooms with formal lounge room at the front of the house. Open plan living, dining, kitchen, separate dining/games room whilst out the back you will be surprised at the large outdoor entertaining area with nook suitable for an outdoor kitchen, huge gardens and potential for side access.

This home is perfect for a large, growing family, those who love to renovate and add their own stamp or the savvy investor.

Other features include:

- * Huge master bedroom with ensuite and walk-in robe
- * A further 3 generous sized bedrooms with built-in robes
- * Wood look laminate flooring to main
- * Tiled kitchen floor
- * Alarmed
- * Gas bayonets for winter
- * Remote double garage with shoppers' entrance to kitchen

A chance to secure an investment situated in the sought-after Settlers Hills estate of Baldivis located only a short drive from the Baldivis shopping precinct with local eateries, schools, an array of community services and easy access to the nearby freeway.



Jan Holloway
Principal - Lewis Holloway Property
M: 0499 955 442
E: jan.holloway@smileelite.com

Features

Alarm System
Built-In Robes
1 Ensuite
2 Living Areas
Outside Entertaining Area
Remote Garage Door
Evaporative Cooling
Gas Heating

Land size

707.00 Sqm

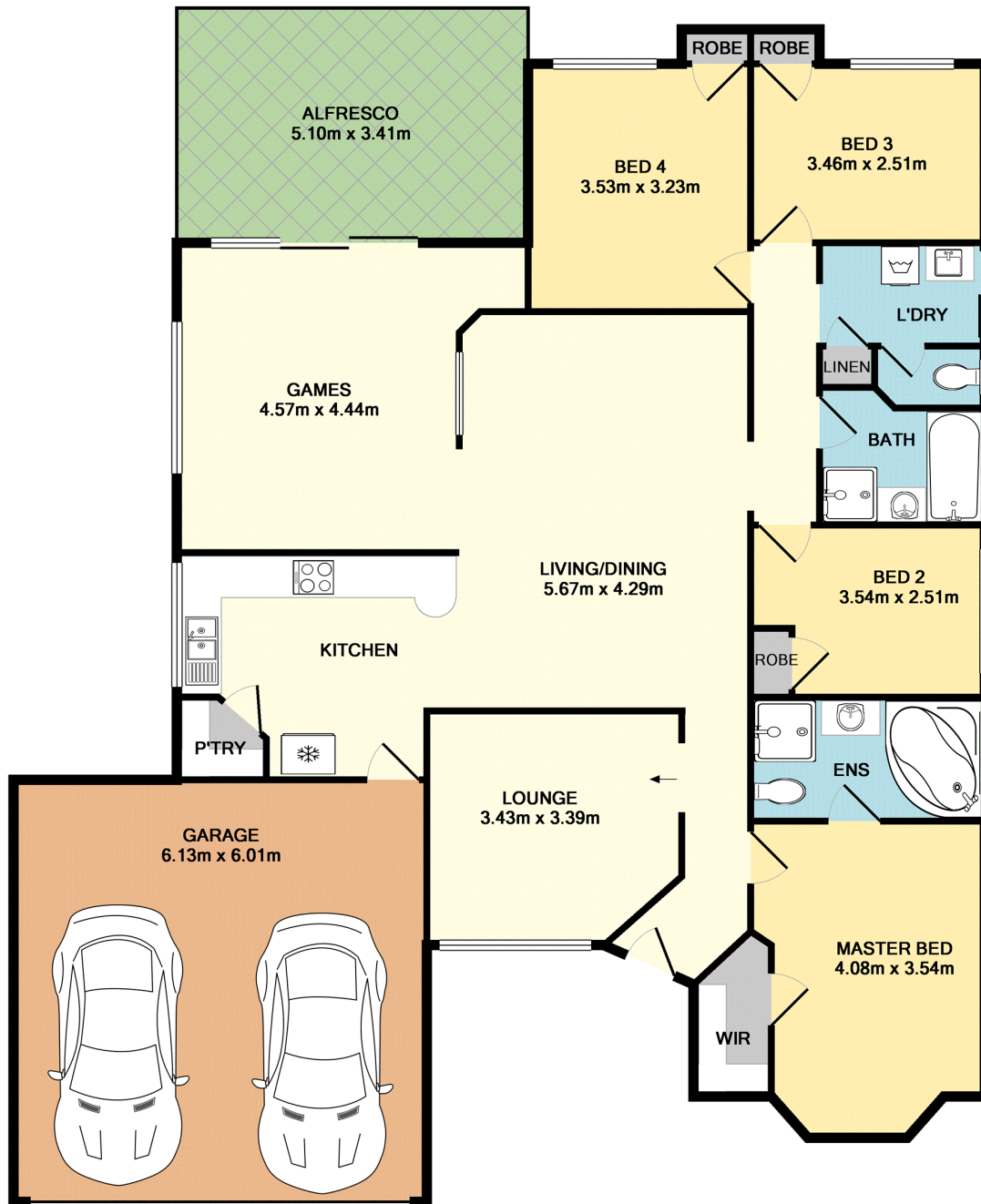


Jan Holloway

Principal - Lewis Holloway Property

M: 0499 955 442

E: jan.holloway@smileelite.com



TOTAL APPROX. FLOOR AREA 176.8 SQ.M. (1903 SQ.FT.)

Whilst every attempt has been made to ensure the accuracy of the floor plan contained here, measurements of doors, windows, rooms and any other items are approximate and no responsibility is taken for any error, omission, or mis-statement. This plan is for illustrative purposes only and should be used as such by any prospective purchaser. The services, systems and appliances shown have not been tested and no guarantee as to their operability or efficiency can be given
 Made with Metropix ©2019

Scale in metres. Dimensions are approximate. All information contained herein is gathered from sources we believe to be reliable, however we cannot guarantee its accuracy and interested persons should rely on their own enquiries.