



200 Pebble Beach Boulevard, MEADOW SPRINGS FOR SALE



Gorgeous Home Just Ready To Move In

Gorgeous Home, Park On Your Doorstep, Ready To Move In.

Purplebricks welcomes 200 Pebble Beach Boulevard to market. A Gorgeous home which won't be around long. Don't miss out, book your private inspection today, call Jan Holloway on 0499 955 442

Entry to this stunning 2014 Summit built home, set on a huge 600m2 elevated block is via single front doors which open onto beautiful porcelain tiles.

The fully fitted exclusive kitchen offers an abundance of stone benchtop work space with high end 900mm stainless steel appliances, dishwasher and cabinetry and with the huge walk in pantry, storage will never be an issue again. The kitchen area, the hub of the family, overlooks the open plan dining area & family room which capture the wonderful views of the wrap around garden.

The master bedroom is at the back of the home. This hugely spacious room with patio door entry onto separate rear courtyard offers his/hers robes, luxury en-suite with double rain shower.

Some Of The Other Features You Will Love include:

- Bench-top to ceiling kitchen cupboard storage
- A further 2 x double and 1 x queen bed
- Stylish main bathroom: bathtub, shower plus separate w.c
- High ceilings
- Ducted and zoned reverse cycle a/c
- 6500kw Solar panels
- Tool shed
- Mains reticulated

The neutral decor, open plan living and lovely outdoor alfresco of this home allows for a real sense of indoor/outdoor living whilst being both low maintenance and easy care. With potential side access to rear courtyard and plenty of room for a pool this property offers all the space, indoors and out for all your growing family needs.



Jan Holloway

Principal - Lewis Holloway Property

M: 0499 955 442

E: jan.holloway@smileelite.com

If the huge wrap around gardens are not enough then pop across the road to Quarry Park Amphitheatre. Also close to several quality public and private schools, major shops and easy access to stunning beaches, freeway, train station and the popular Mandurah Foreshore

Features

ADSL Available
Built-In Robes
Dishwasher
1 Ensuite
1 Living Area
Courtyard
Fully Fenced
Outside Entertaining Area
Remote Garage Door
Shed

Land size

600.00 Sqm

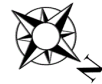
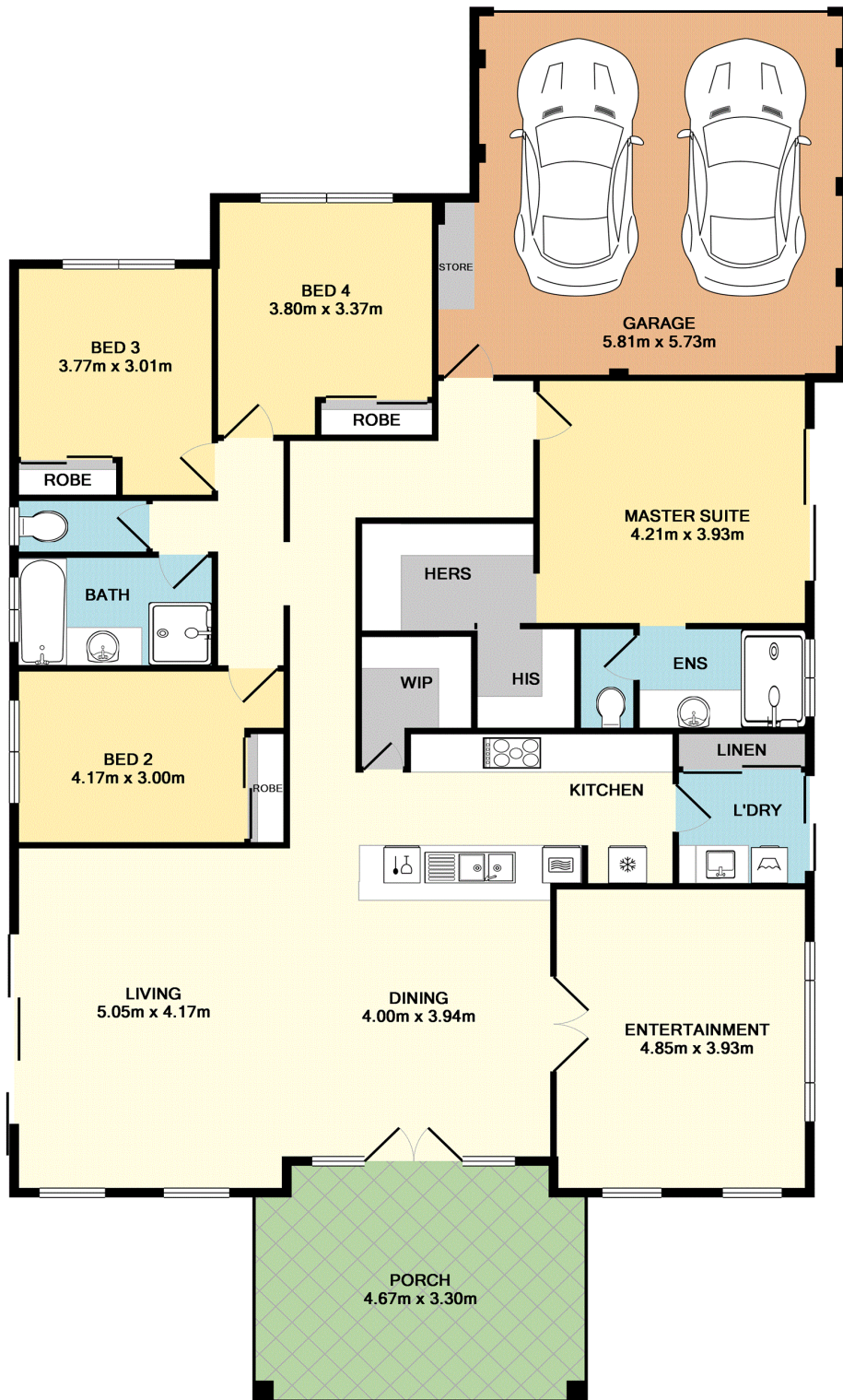


Jan Holloway

Principal - Lewis Holloway Property

M: 0499 955 442

E: jan.holloway@smileelite.com



TOTAL APPROX. FLOOR AREA 204.3 SQ.M. (2199 SQ.FT.)

Whilst every attempt has been made to ensure the accuracy of the floor plan contained here, measurements of doors, windows, rooms and any other items are approximate and no responsibility is taken for any error, omission, or mis-statement. This plan is for illustrative purposes only and should be used as such by any prospective purchaser. The services, systems and appliances shown have not been tested and no guarantee as to their operability or efficiency can be given
 Made with Metropix ©2019

Scale in metres. Dimensions are approximate. All information contained herein is gathered from sources we believe to be reliable, however we cannot guarantee its accuracy and interested persons should rely on their own enquiries.