

## 10 Anfield Court, BALDIVIS FOR SALE

**4 bedroom house**

LIVE THE HIGH LIFE

DON'T DELAY, BOOK A VIEWING TODAY.

Reminiscent of the Hamptons, this impressive residence combines the absolute best of indoor and outdoor living with a stunning alfresco with ceiling fans, down lights and stunning saltwater pool; the ultimate entertainer or urban escape.

Built in 2014 by 101 Residential, this designer two storey home is a class above the rest.

Every inch is styled and finished to perfection with no compromise on space or functionality.

Elevated on the high end of Highbury Estate, this home impresses from the tree-lined street, overlooking a gorgeous, manicured parkland on an oh so quiet street.

Manicured, landscaped gardens and grand portico lead into a welcoming entryway.

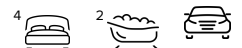
Being elevated ensures views are taken in style with the spacious parents retreat leading up from the grand staircase offering a peaceful escape and picture-perfect views.

With views of the stunning pool you would be forgiven for thinking you were in a 5 star resort.

The king size master suite at the front of the home ensures privacy and a restful abode can be savored with his and her's spacious walk-in dressing room, large en-suite with twin vanities overlooking the pool. All three remaining bedrooms have double mirrored robes.

Downstairs, porcelain floor tiles and a wall of windows capture views from multiple living areas while the central living space seamlessly flows through to the outdoors into a cool verandah overlooking a sparkling 7m oasis style pool.

Jaw-droppingly gorgeous, the open plan gourmet kitchen with central breakfast bar is a stand out with its crisp white and wooden cabinetry, stone bench tops, floor to ceiling cupboards, plumbed double fridge recess and impressive appliance/food walk-in pantry.



**Denise Lewis**

Principal - Lewis Holloway Property

**M:** 0412 877 613

**E:** denise.lewis@smileelite.com

This spacious family residence surrounded by stylish homes in sought after Highbury Estate offers style, class, comfort, peace and relaxing spaces indoors and out.

**Kitchen / Breakfast:** Love entertaining? Your spacious kitchen has not one but two under bench ovens and a 6 burner gas hot plate, perfect for special occasions.

**Surrounding Area:** You will simply fall in love with the style, features and location of this home directly opposite a park from the tree lined entrance to the stunning parks on your doorstep.

Cafes, restaurants, 3 fabulous parks and 2 schools sit under 3 minutes away by car, while the Kwinana Freeway will get you to the CBD within 40 minutes or a short distance to the Wellard train station.

**Landscaped Gardens:** A screen of natural foliage provides privacy from the street front and around the grounds, while manicured gardens offer plenty of space for pets, kids to play or outdoor entertaining all year round.

### Features

- ADSL Available
- Built-In Robes
- Dishwasher
- 1 Ensuite
- 2 Living Areas
- Rumpus Room
- Study
- 2 Carports
- Courtyard
- Fully Fenced
- Inground Pool
- Outside Entertaining Area
- Remote Garage Door
- Secure Parking
- Shed
- Air Conditioning
- Ducted Cooling
- Ducted Heating

### Land size

529.00 Sqm

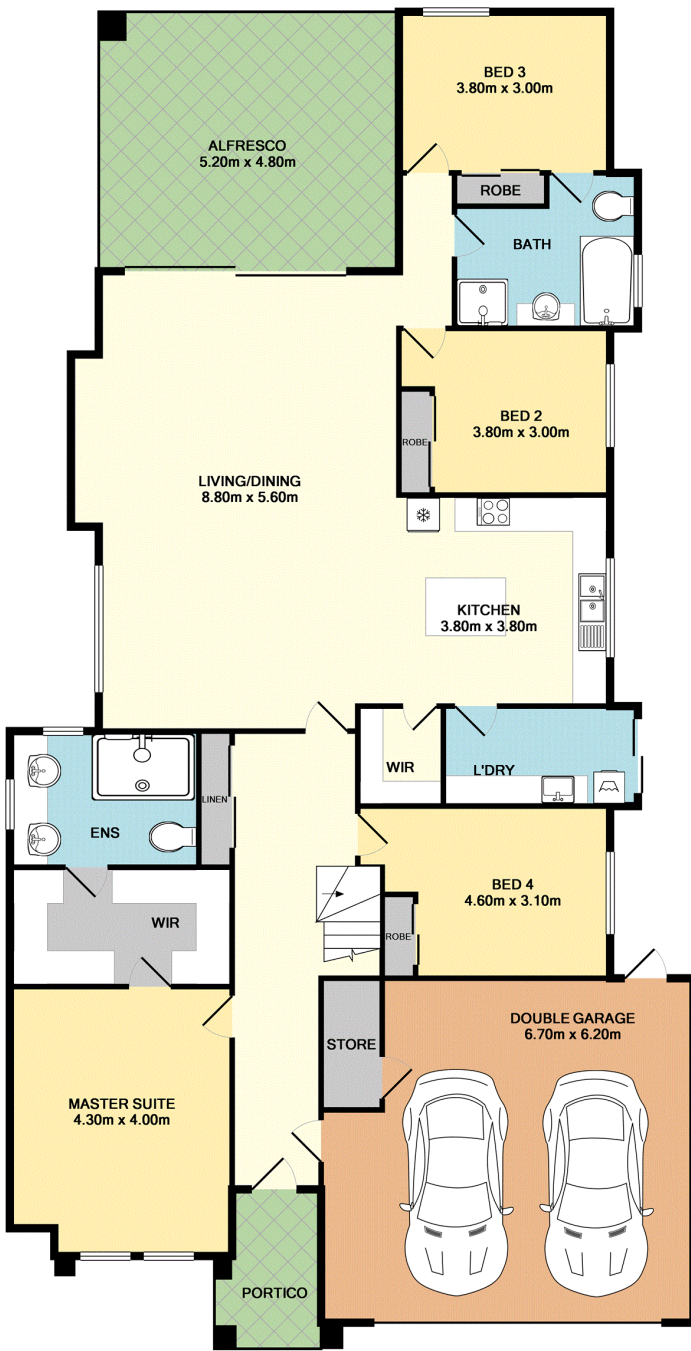


**Denise Lewis**

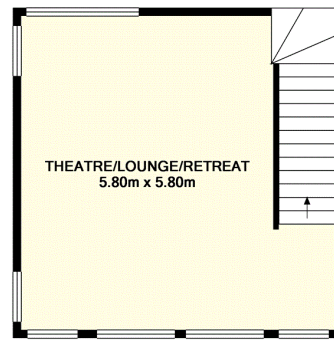
Principal - Lewis Holloway Property

**M:** 0412 877 613

**E:** [denise.lewis@smileelite.com](mailto:denise.lewis@smileelite.com)



GROUND FLOOR



1ST FLOOR

TOTAL APPROX. FLOOR AREA 304.0 SQ.M. (3272 SQ.FT.)

Whilst every attempt has been made to ensure the accuracy of the floor plan contained here, measurements of doors, windows, rooms and any other items are approximate and no responsibility is taken for any error, omission, or mis-statement. This plan is for illustrative purposes only and should be used as such by any prospective purchaser. The services, systems and appliances shown have not been tested and no guarantee as to their operability or efficiency can be given.  
Made with Metropix ©2019

Scale in metres. Dimensions are approximate. All information contained herein is gathered from sources we believe to be reliable, however we cannot guarantee its accuracy and interested persons should rely on their own enquiries.