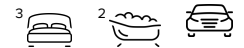




134 Honeywood Avenue, WANDI FOR SALE



3 bedroom house

At this price this 3 bedroom 2 bathroom recently built home is unbeatable value, why build when you can move straight in!

Enjoy the convenience of easy care living whilst also enjoying being close to nature with parklands only a stones throw away.

This home ticks all the boxes with a large private master bedroom and ensuite, a modern neutral toned kitchen to the heart of the home with stainless steel appliances and plenty of storage space. Add to this the kitchen overlooks the spacious living and dining area and opens onto the alfresco area which is perfect for entertaining. The minor bedrooms are generously sized and share a well appointed main bathroom.

Master Bedroom: The large master bedroom located at the front of the property offering plenty of light includes a a generous sized his and hers walk in robe followed by a well appointed ensuite.

Kitchen: Fit for a chef! With plenty of counter space and storage this kitchen is well appointed featuring stainless steel appliances.

Open Plan Living: The large open plan living and dining looking out to the covered alfresco area offers plenty of space and light.

Alfresco: The decked alfresco is a perfect setting for entertaining with family and friends. Easy maintenance, the decked area ensures you can spend your weekends walking through the parklands close by or relaxing.

Home Theatre: The large home theatre situated towards the front of the property is the perfect room to unwind and watch your favourite movie.

Bathroom Two: The well appointed main bathroom is located close to the second and third bedrooms which are both generous in size.

Features

Built-In Robes



Denise Lewis

Principal - Lewis Holloway Property

M: 0412 877 613

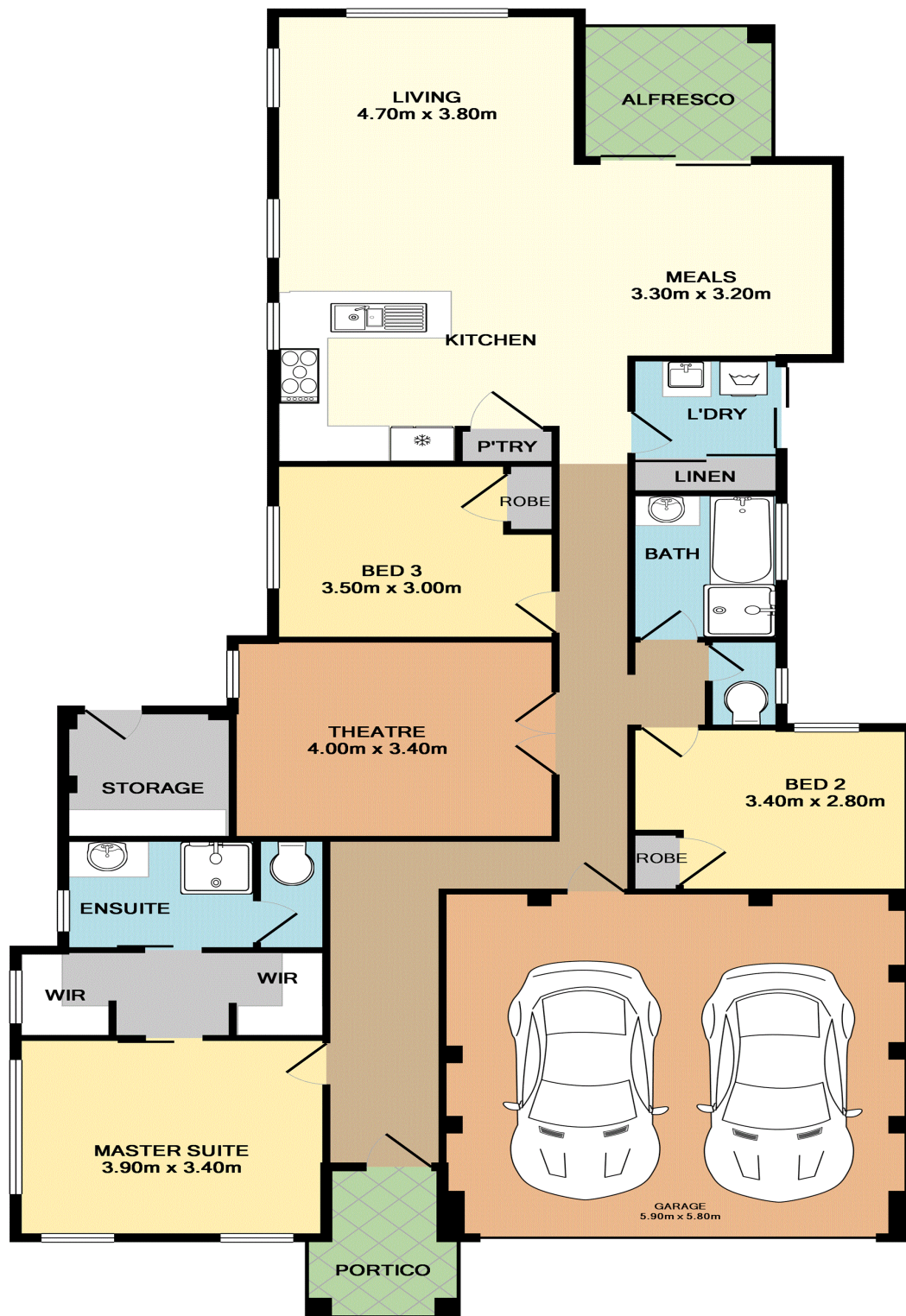
E: denise.lewis@smileelite.com

1 Ensuite
1 Living Area
2 Carports
Deck
Outside Entertaining Area
Ducted Cooling
Ducted Heating

Land size
346.00 Sqm



Denise Lewis
Principal - Lewis Holloway Property
M: 0412 877 613
E: denise.lewis@smileelite.com



TOTAL APPROX. FLOOR AREA 165.7 SQ.M. (1784 SQ.FT.)

Whilst every attempt has been made to ensure the accuracy of the floor plan contained here, measurements of doors, windows, rooms and any other items are approximate and no responsibility is taken for any error, omission, or mis-statement. This plan is for illustrative purposes only and should be used as such by any prospective purchaser. The services, systems and appliances shown have not been tested and no guarantee as to their operability or efficiency can be given
 Made with Metropix ©2017

Scale in metres. Dimensions are approximate. All information contained herein is gathered from sources we believe to be reliable, however we cannot guarantee its accuracy and interested persons should rely on their own enquiries.