



Unit 6/13 Grebe Gardens, YANGETUP FOR SALE



3 bedroom unit

UNIT WITH LARGE GARDEN

Welcome to UNIT 6/13 Grebe Gardens overlooking tranquil Perena Rocchie Reserve.

The largest unit in a small group of 7 and the only one which comes with the option to include some furniture, two undercover alfresco areas, side access and more parking which is a bonus if you are just starting out, have a trailer, camper or more than one car.

Walking through this spacious 3 bedroom unit you will be surprised with the styling, layout, generous light and open plan living area and kitchen which overlooks large manicured gardens and views across the park.

Perfect as an investment or batch pad. Book your inspection today.

Strata Fees: \$650 p.a. Rates: \$1500 p.a.

Open Plan Living: The large open plan living area with designated living and dining areas is the perfect size whether looking to unwind or entertaining all of your family and friends.

Kitchen: The spacious kitchen with plenty of windows overlooking the gardens and park behind is light and bright.

Master Bedroom: The large master bedroom offers plenty of privacy at the rear and ample room for a king size bed with easy access to the main bathroom.

Bedroom Three: The 2 minor bedrooms are both extremely generous in size with plenty of storage.

These two bedrooms are both easily accessible to the large and spacious main bathroom.

Alfresco: The large alfresco area is simply unrivalled. Looking out across the large and spacious gardens through to the parks and trees on the other side of the fence you will notice just how peaceful and relaxing this property is. To book in a private viewing today simply visit purplebricks.com.au!



Denise Lewis

Principal - Lewis Holloway Property

M: 0412 877 613

E: denise.lewis@smileelite.com

Features

Alarm System
Built-In Robes
2 Living Areas
2 Carports
Courtyard
Fully Fenced
Outside Entertaining Area
Remote Garage Door
Secure Parking
Shed
Gas Heating

Land size

107.00 Sqm

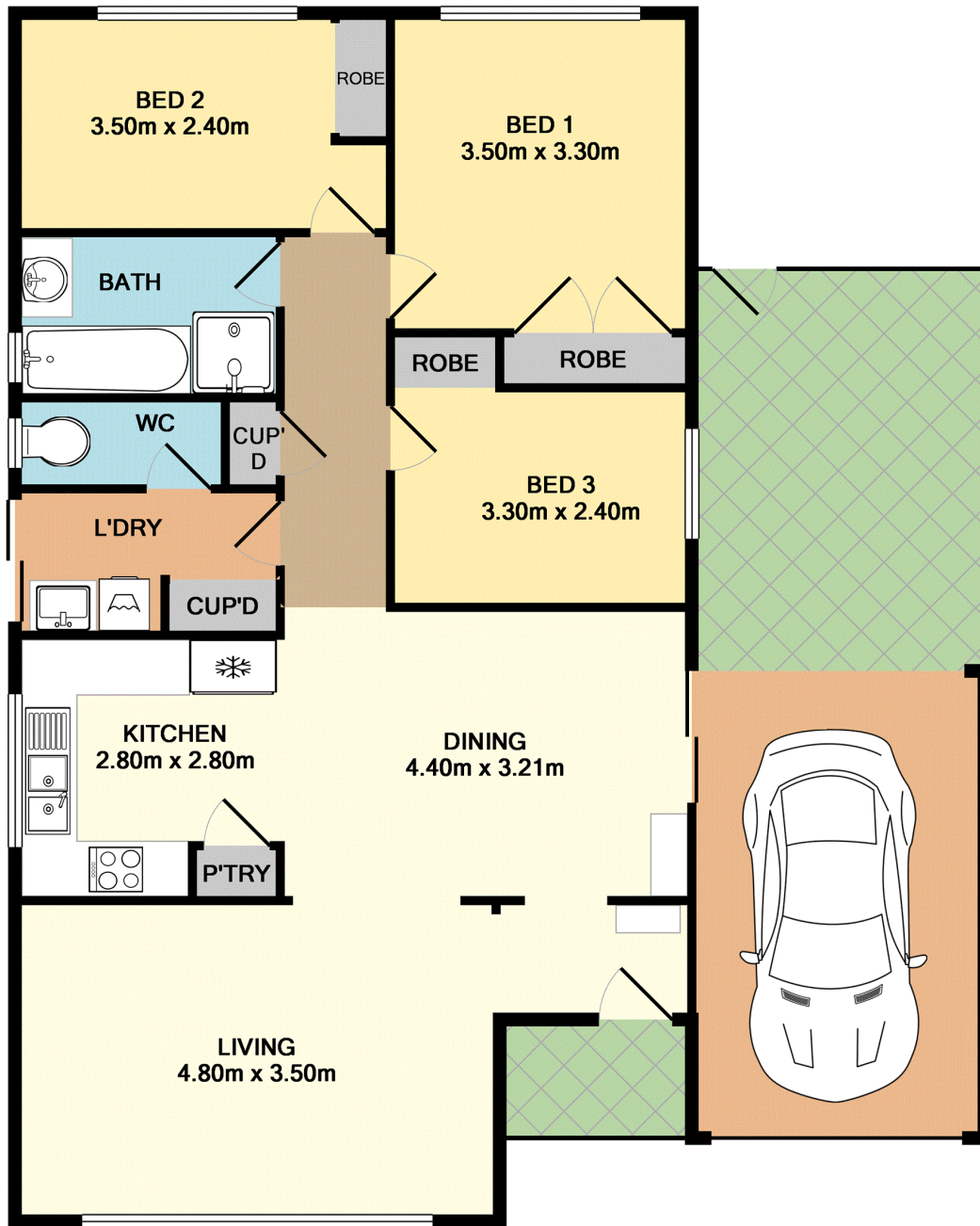


Denise Lewis

Principal - Lewis Holloway Property

M: 0412 877 613

E: denise.lewis@smileelite.com



TOTAL APPROX. FLOOR AREA 109.4 SQ.M. (1178 SQ.FT.)

Whilst every attempt has been made to ensure the accuracy of the floor plan contained here, measurements of doors, windows, rooms and any other items are approximate and no responsibility is taken for any error, omission, or mis-statement. This plan is for illustrative purposes only and should be used as such by any prospective purchaser. The services, systems and appliances shown have not been tested and no guarantee as to their operability or efficiency can be given
 Made with Metropix ©2017

Scale in metres. Dimensions are approximate. All information contained herein is gathered from sources we believe to be reliable, however we cannot guarantee its accuracy and interested persons should rely on their own enquiries.