



1 Sawmill Close, Uralla FOR SALE



Beautiful Family Home

Welcome to 1 Sawmill Close, Uralla! This stunning property offers the perfect investment opportunity with its solid brick construction and desirable features.

Situated on a spacious block, this home boasts three generous bedrooms and two modern bathrooms, providing ample space for comfortable living. The master bedroom includes an ensuite for added convenience and privacy.

The property also features a double car garage, allowing secure parking for two vehicles and additional storage space.

With its solid brick construction, this home offers durability and low maintenance, ensuring a hassle-free investment.

Located in the charming town of Uralla, this property is surrounded by the natural beauty of the New England region. It offers a peaceful and serene lifestyle while still being conveniently close to local amenities, schools, and recreational facilities.

Don't miss out on this fantastic investment opportunity at 1 Sawmill Close, Uralla. Contact us today to arrange a viewing and make this property yours!

Features



Nathan Whitton

Principal – Nathan Whitton Property

M: 0435 252 908

E: nathan.whitton@smileelite.com



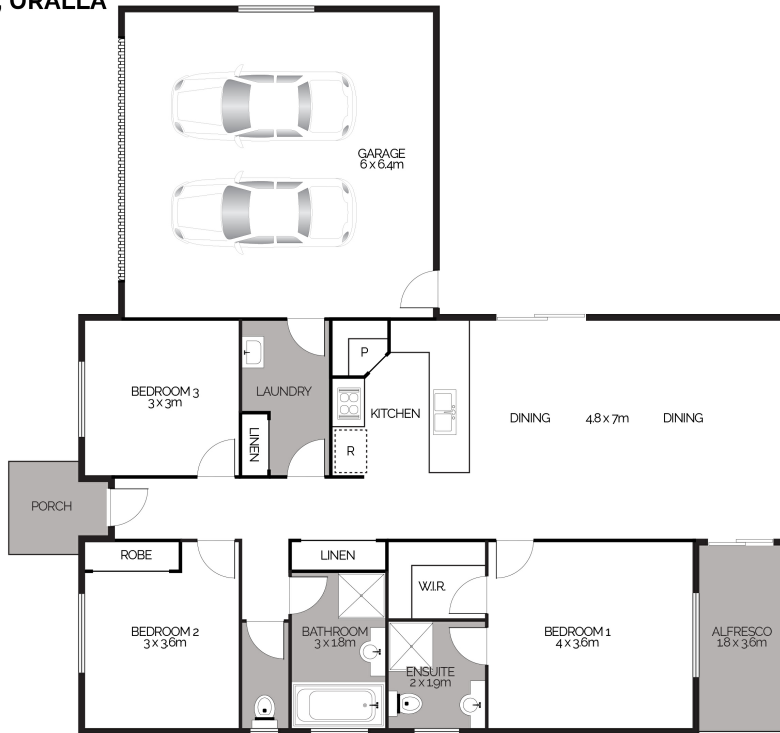
Nathan Whitton

Principal – Nathan Whitton Property

M: 0435 252 908

E: nathan.whitton@smileelite.com

1 Sawmill Close, URALLA



This floor plan is intended as a guide only. Layout dimensions are approximate only. No representations or warranties of any nature whatsoever are given or intended. Any person using this information should rely on their own enquiries. Floor Plans by JP Media.

Scale in metres. Dimensions are approximate. All information contained herein is gathered from sources we believe to be reliable, however we cannot guarantee its accuracy and interested persons should rely on their own enquiries.