



23 Mazari Grove, Stanhope Gardens FOR SALE



Another premium price sold by Irving

Welcome to this immaculately presented, single-level family home positioned on the high side of a quiet and family-friendly cul-de-sac in the heart of Stanhope Gardens. An entertainer's paradise, this residence showcases a spacious and level easy-care backyard with an extensive covered pergola—an ideal setting for hosting gatherings with family and friends.

This east-facing home is conveniently positioned to enjoy all local amenities. It is a brief stroll away from Stanhope Village Shopping Centre, Blacktown Leisure Centre, library, and bus stops with express city bus. This home will be an ideal option for first-home buyer, growing families or investors; it won't last long, and an inspection is a must!

Features

- Three bedrooms, master with walk-in robe and ensuite
- Generous sized living/family area filled with bright natural light
- Modern, spacious kitchen, gas cooktop, 40mm stone benchtops, ample storage and bench spaces
- Main bathroom with bathtub, shower and separate toilet
- Spacious covered pergola area ideal for outdoor entertaining
- Large, fully fenced, level backyard ideal for kids or pets
- Double automatic garage with internal access
- Air-conditioning, downlights, ceiling fans, internal gas points and NBN connection ready
- Short walk to Stanhope Village Shopping Centre, Blacktown Leisure Centre, library and parks
- Bus stops at your doorstep, providing service to City CBD (express service), St Marys, Rouse Hill, Parramatta and Blacktown

Alarm System

Built-In Robes

Dishwasher

NBN Available

Outside Entertaining Area

Remote Garage Door

Secure Parking

Air Conditioning



Irving Gunawan

Principal - Irving G Property

M: 0468 956 677

E: irving.gunawan@smileelite.com



Anik Singh

Sales Agent - Irving G Property

M: 0450 929 679

E: anik.singh@smileelite.com

Land size

372.00 Sqm



Irving Gunawan

Principal - Irving G Property

M: 0468 956 677

E: irving.gunawan@smileelite.com



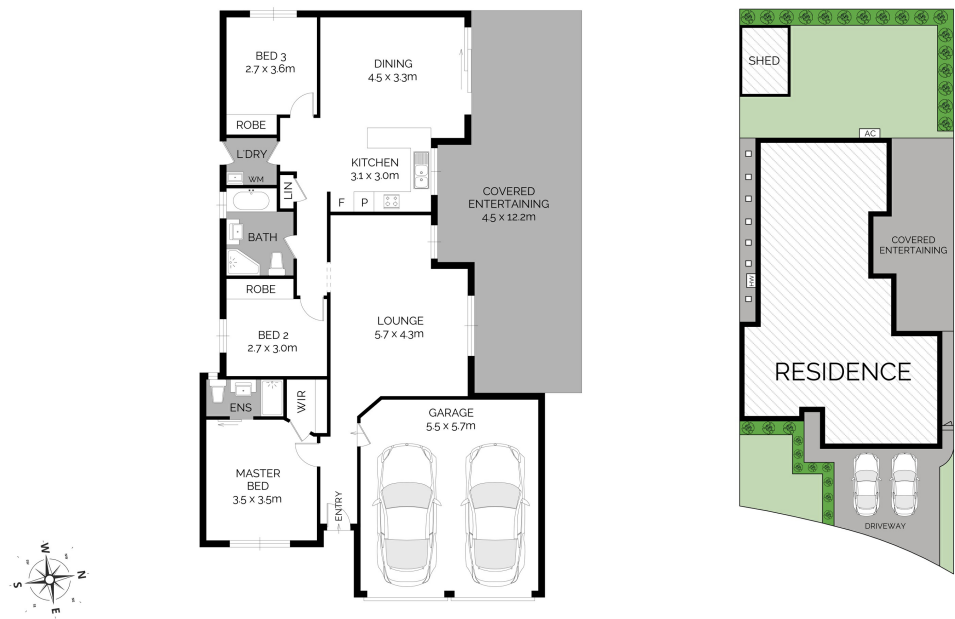
Anik Singh

Sales Agent - Irving G Property

M: 0450 929 679

E: anik.singh@smileelite.com

23 MAZARI GROVE, STANHOPE GARDENS



Scale in meters. Dimensions are approximate. All information contained herein is gathered from sources we believe to be reliable, however we cannot guarantee its accuracy and interested persons should rely on their own enquiries.

Scale in metres. Dimensions are approximate. All information contained herein is gathered from sources we believe to be reliable, however we cannot guarantee its accuracy and interested persons should rely on their own enquiries.