



### 31 Gurton Street, Marsden Park FOR SALE



#### Another SOLD for Premium Result by Irving Gunawan

Built for a growing family and located in one of the most sought-after pockets of Marsden Park, this beautiful contemporary home offers everything a modern family could desire. It boasts generously sized bedrooms, a sleek kitchen featuring a waterfall Caesarstone benchtop, and bathrooms adorned with full-height tiling. Whether you are looking for investment or move-in, don't miss out on this opportunity!

#### Features:

- A spacious living and dining area
- Modern kitchen with Caesarstone benchtop with waterfall edges and 90cm appliances, dishwasher and plenty of storage
- Floor-to-ceiling tiling in the bathrooms
- Large bedrooms upstairs with a balcony in the front bedroom
- Ducted air-conditioning and security system
- Low maintenance front and backyard
- Single automatic lock-up garage with internal access
- Short walk to bus stops with buses going to Rouse Hill Station, Schofield Station, Mount Druitt Station and Blacktown Station via Riverstone and Colebee
- Short walk to Marsden Park Public Schools, St Luke's Catholic College, Elara Village Shopping Centre, playground and parks

A beautiful home awaits a growing family, investor or downsizer. For more information contact us today!

#### Features

- Built-In Robes
- Dishwasher
- Floorboards
- NBN Available
- Pet Friendly
- Courtyard
- Fully Fenced
- Remote Garage Door
- Secure Parking
- Air Conditioning



**Irving Gunawan**

Principal - Irving G Property

M: 0468 956 677

E: [irving.gunawan@smileelite.com](mailto:irving.gunawan@smileelite.com)



**Anik Singh**

Sales Agent - Irving G Property

M: 0450 929 679

E: [anik.singh@smileelite.com](mailto:anik.singh@smileelite.com)

Ducted Cooling



**Irving Gunawan**

Principal - Irving G Property

**M:** 0468 956 677

**E:** [irving.gunawan@smileelite.com](mailto:irving.gunawan@smileelite.com)

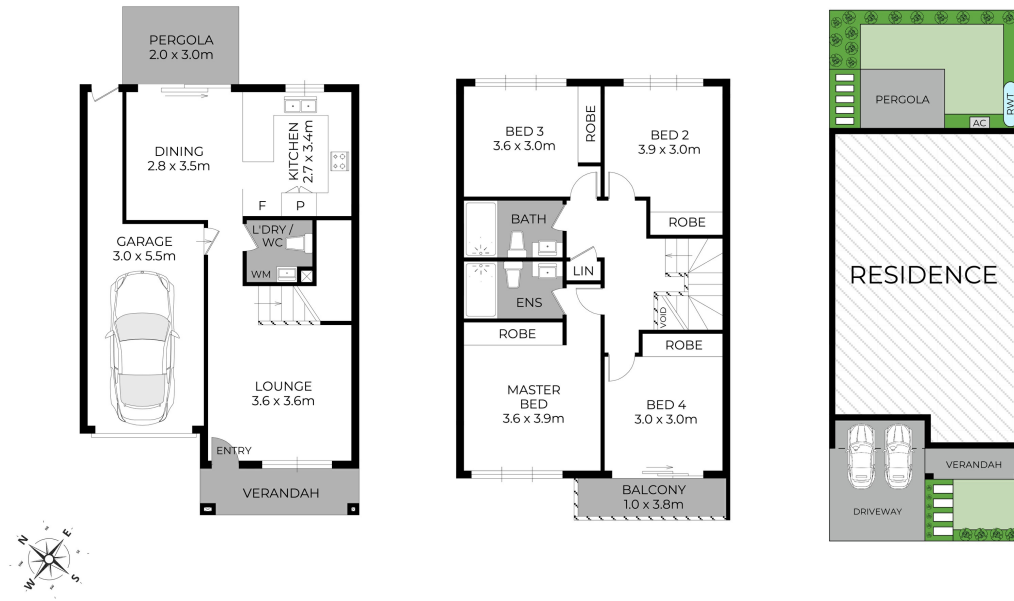


**Anik Singh**

Sales Agent - Irving G Property

**M:** 0450 929 679

**E:** [anik.singh@smileelite.com](mailto:anik.singh@smileelite.com)



Scale in metres. Dimensions are approximate. All information contained herein is gathered from sources we believe to be reliable, however we cannot guarantee its accuracy and interested persons should rely on their own enquiries.