



### 8 Messina Street, Parklea FOR SALE



**Another Suburb Record for house under 400sqm SOLD by Irving Gunawan - 0468 956 677 for Parklea!!**

Move to this four-bedroom east-facing home; it has plenty of space with several living areas, an updated kitchen, and a big covered outdoor space perfect for family BBQs, surrounded by easy-to-maintain yards. This home is just a short walk to bus stops for direct rides to the City CBD, Rouse Hill, St Marys, Parramatta and Blacktown. Primely positioned within the catchment for Quakers Hill East Public and Quakers Hill High Schools and near the shopping centre, sports centre, library and parks. Don't miss out on this family-friendly home – come see the home soon!

- Four bedrooms, master with walk-in robe and ensuite
- Bright living areas throughout, including multiple areas on the ground floor and an additional living area upstairs
- Modern open-plan kitchen, gas cooktop, stone benchtops, ample storage and bench spaces
- Main bathroom with bathtub, shower and separate toilet plus toilet downstairs
- Spacious covered pergola area with kitchenette ideal for outdoor entertaining
- Fully fenced and level backyard ideal for kids or pets
- Convenient automatic double garage with direct house access
- Comforts include ducted air conditioning, downlights, ceiling fans, gas outlets, and NBN-ready
- Close to Quakers Hill East Public, Quakers Hill High Schools, Stanhope Village Shopping Centre, Blacktown Leisure Centre, library and parks
- Bus stops at your doorstep, providing service to City CBD (express service), St Marys, Rouse Hill, Parramatta and Blacktown

Your dream home awaits!

**Disclaimer:** All information contained herein is obtained from property owners or third-party sources which we believe are reliable. We have no reason to doubt its accuracy, however we cannot guarantee it. All interested person/s should rely on their own enquiries.

#### Features

Solar Panels  
3 Toilets  
Built-In Robes  
Dishwasher



**Irving Gunawan**

Principal - Irving G Property

**M:** 0468 956 677

**E:** [irving.gunawan@smileelite.com](mailto:irving.gunawan@smileelite.com)



**Anik Singh**

Sales Agent - Irving G Property

**M:** 0450 929 679

**E:** [anik.singh@smileelite.com](mailto:anik.singh@smileelite.com)

1 Ensuite  
Floorboards  
4 Living Areas  
NBN Available  
Pet Friendly  
Courtyard  
Fully Fenced  
Outside Entertaining Area  
Patio  
Remote Garage Door  
Secure Parking  
Air Conditioning  
Ducted Cooling  
Ducted Heating  
Gas Heating

**Land size**

396.50 Sqm



**Irving Gunawan**

Principal - Irving G Property

**M:** 0468 956 677

**E:** [irving.gunawan@smileelite.com](mailto:irving.gunawan@smileelite.com)

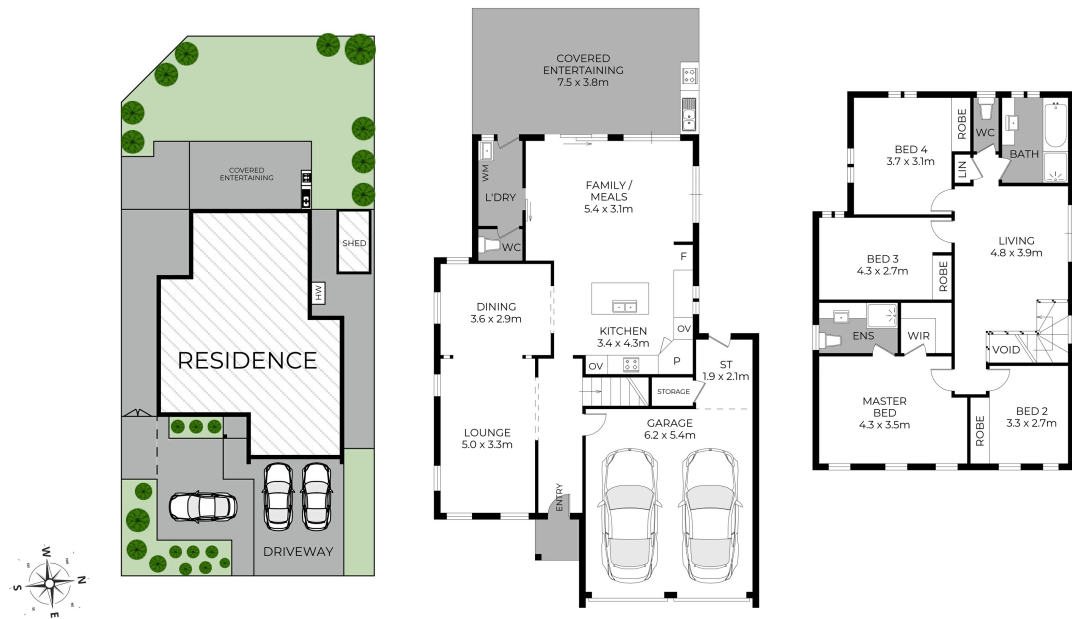


**Anik Singh**

Sales Agent - Irving G Property

**M:** 0450 929 679

**E:** [anik.singh@smileelite.com](mailto:anik.singh@smileelite.com)



Scale in metres. Dimensions are approximate. All information contained herein is gathered from sources we believe to be reliable, however we cannot guarantee its accuracy and interested persons should rely on their own enquiries.