



4 Albion Close, Armidale FOR SALE



Family Home in Charming Neighbourhood

Welcome to 4 Albion CLS, located in the charming neighbourhood of Armidale. This modern property offers a perfect blend of style and functionality. The house features four bedrooms, providing ample space for a growing family or guests. With two bathrooms, getting ready in the morning will be a breeze. The two-car garage ensures convenient parking for your vehicles.

Step into the heart of the home and be greeted by a crisp white modern kitchen. This space is a true culinary haven, with sleek finishes and state-of-the-art appliances that will inspire your inner chef. Whether you're preparing a quick meal or hosting a dinner party, this kitchen is sure to impress.

The property also boasts two spacious living spaces, giving you the flexibility to create separate areas for relaxation and entertainment. Whether you prefer cozy movie nights or lively gatherings, these living spaces will cater to your every need.

Outside, you'll find a beautifully maintained garden that adds a touch of tranquility to the property. Take a leisurely stroll and enjoy the vibrant colors and fragrant blooms. It's the perfect place to unwind after a long day or host outdoor gatherings with family and friends.

Don't miss the opportunity to make this modern oasis your own. Schedule a viewing today and experience the comfort and elegance of 4 Albion CLS, Armidale.

Features



Nathan Whitton
Principal – Nathan Whitton Property
M: 0435 252 908
E: nathan.whitton@smileelite.com



Bek McFarlane
Sales Associate - Nathan Whitton Property
M: 0432 122 421
E: bek.mcfarlane@smileelite.com



Nathan Whitton

Principal – Nathan Whitton Property

M: 0435 252 908

E: nathan.whitton@smileelite.com



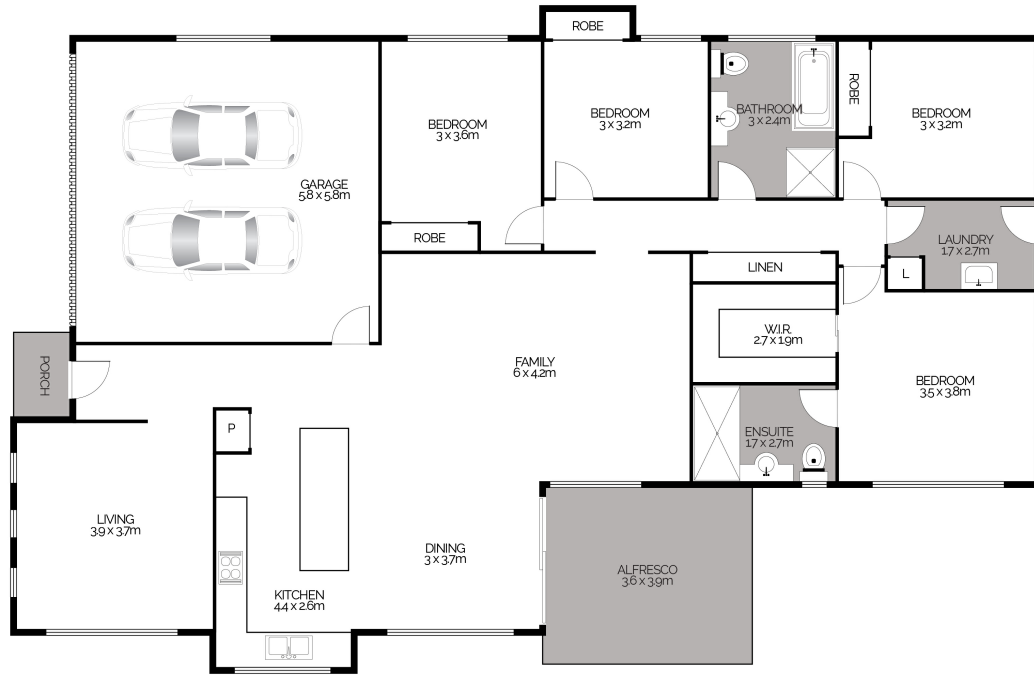
Bek McFarlane

Sales Associate - Nathan Whitton Property

M: 0432 122 421

E: bek.mcfarlane@smileelite.com

4 Albion Close, ARMIDALE



This floor plan is intended as a guide only. Layout dimensions are approximate only. No representations or warranties of any nature whatsoever are given or intended. Any person using this information should rely on their own enquiries. Floor Plans by JP Media.



Scale in metres. Dimensions are approximate. All information contained herein is gathered from sources we believe to be reliable, however we cannot guarantee its accuracy and interested persons should rely on their own enquiries.