



8 Aylsford Street, Stanhope Gardens AUCTION

Another Suburb Price **SOLD** by Irving Gunawan - 0468 956 677 for Stanhope Gardens, Kellyville Ridge & The Ponds!!

Welcome to this immaculately presented family home situated in one of Stanhope Gardens' most convenient locations within the school catchment of Kellyville Ridge Public and Glenwood High School. This recently renovated three-bedroom home is conveniently located within a short walk to Kellyville Metro Station. With three large bedrooms, all with built-in robes, and a spacious living area, this property has plenty to look forward to.

Its proximity to essential amenities enhances its appeal, with Stanhope Village, Stanhope Leisure Centre, bus stops, parks, playgrounds, and schools all within easy access. Adding to this is exclusive access to two nearby private clubhouses with pools, spas, tennis courts, and BBQ areas. This home will be an ideal option for a first-time buyer, downsizer, or investor; it won't last long, and an inspection is a must!

Features:

- Three good-sized bedrooms, all with walk-in robe
- Generous-sized living/family area filled with bright natural light
- Neat kitchen, gas cooktop, dishwasher and ample bench spaces
- Main bathroom with bathtub, shower and toilet
- Spacious covered pergola area ideal for outdoor entertaining
- Large and fully fenced backyard ideal for kids or pets to play
- Air-conditioning, downlights, internal gas points and NBN connection ready
- A single lock-up garage with access to pergola
- School catchment: Kellyville Ridge Public School and Glenwood High School
- Short walk to Kellyville Metro Station, bus stops, Stanhope Village Shopping Centre, Blacktown Leisure Centre, library, parks and schools

Your dream home awaits!

Features

Grey Water System
Built-In Robes
Dishwasher
Floorboards
NBN Available



Irving Gunawan

Principal - Irving G Property

M: 0468 956 677

E: irving.gunawan@smileelite.com



Anik Singh

Sales Agent - Irving G Property

M: 0450 929 679

E: anik.singh@smileelite.com

Auction

7th Apr 2024 12:00PM

Pet Friendly
Courtyard
Fully Fenced
Inground Pool
Outside Entertaining Area
Tennis Court
Air Conditioning
Split System A/C

Land size

390.00 Sqm



Irving Gunawan

Principal - Irving G Property

M: 0468 956 677

E: irving.gunawan@smileelite.com



Anik Singh

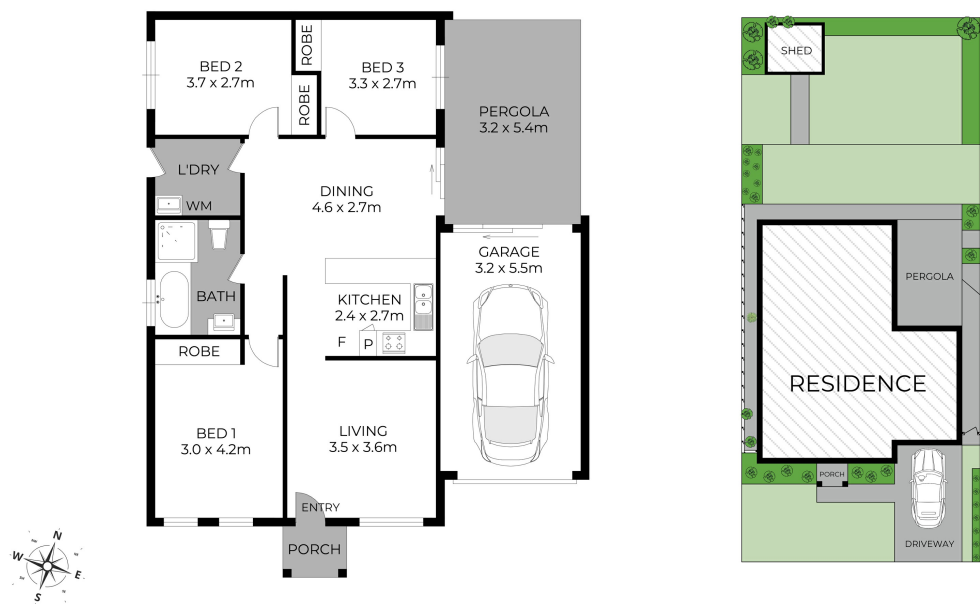
Sales Agent - Irving G Property

M: 0450 929 679

E: anik.singh@smileelite.com

Auction

7th Apr 2024 12:00PM



Scale in metres. Dimensions are approximate. All information contained herein is gathered from sources we believe to be reliable, however we cannot guarantee its accuracy and interested persons should rely on their own enquiries.