



## 14 Gostwyck Street, Uralla FOR SALE



### Charming Property

Welcome to 14 Gostwyck Street, Uralla! This charming property is located in the quiet and family-friendly neighborhood of Woodville, offering a perfect investment opportunity or ideal first home.

Featuring four spacious bedrooms, this home provides ample space for a growing family or the option to convert one of the rooms into a home office or study. The well-appointed bathroom offers convenience and functionality for everyday use.

Situated on a generous block, this property includes a single car garage, providing secure parking for your vehicle and additional storage space.

One of the highlights of this property is its prime location near the footy fields and bike park, making it an ideal choice for families with kids. The kids can enjoy outdoor activities and sports just a stone's throw away from home. Additionally, the property is just a short walk to the vibrant Main Street, where you can find an array of shops, cafes, and amenities.

Whether you're looking for a solid investment opportunity or searching for your first home, 14 Gostwyck Street offers the perfect blend of comfort, convenience, and affordability. Don't miss out on this fantastic opportunity. Contact us today to arrange a viewing and make this property yours!

### Features

#### Land size

763.00 Sqm



**Nathan Whitton**

Principal – Nathan Whitton Property

**M:** 0435 252 908

**E:** nathan.whitton@smileelite.com



**Bek McFarlane**

Sales Associate - Nathan Whitton Property

**M:** 0432 122 421

**E:** bek.mcfarlane@smileelite.com



**Nathan Whitton**

Principal – Nathan Whitton Property

**M:** 0435 252 908

**E:** [nathan.whitton@smileelite.com](mailto:nathan.whitton@smileelite.com)



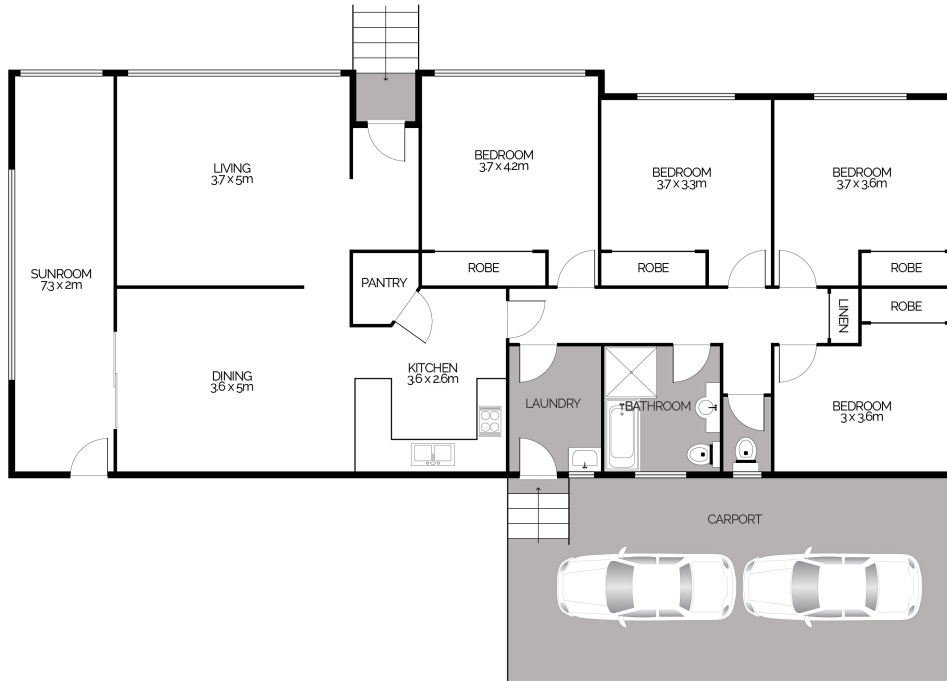
**Bek McFarlane**

Sales Associate - Nathan Whitton Property

**M:** 0432 122 421

**E:** [bek.mcfarlane@smileelite.com](mailto:bek.mcfarlane@smileelite.com)

14 Gostwyck Street, URALLA



This floor plan is intended as a guide only. Layout dimensions are approximate only. No representations or warranties of any nature whatsoever are given or intended. Any person using this information should rely on their own enquiries. Floor Plans by JP Media.



Scale in metres. Dimensions are approximate. All information contained herein is gathered from sources we believe to be reliable, however we cannot guarantee its accuracy and interested persons should rely on their own enquiries.