



16 Panorama Parade, Moruya FOR SALE



Ideal Investment or First home !

Nestled in a cul-de-sac this property is on the market for the first time. Located on the high side of the road with a lovely outlook, this well-presented brick-and-tile residence offers the perfect blend of convenience and comfort. The north-facing open-plan lounge and dining area create a welcoming space, complemented by a well-appointed kitchen which opens onto a charming rear covered entertaining space.

With three bedrooms, each boasting built-in robes and a good-sized bathroom, this home caters to both style and practicality. The garage provides space for the car and also offers room for the tool bench or space for storage.

A large fenced yard becomes a haven for relaxation and play for kids and pets, not to mention the property's proximity to schools and local golf club which creates a seamless lifestyle. Just minutes away, Moruyas restaurants, cafes, specialty shops, supermarkets, and the picturesque Moruya River, create an idyllic setting for family life. This property serves as a great home or a fantastic investment. Call me to arrange your inspection.

Rates: \$2828.30 pa

Features

- 1 Toilet
- Built-In Robes
- Dishwasher
- 1 Living Area
- NBN Available
- Fully Fenced
- Outside Entertaining Area
- Patio
- Secure Parking
- Air Conditioning

Land size

762.00 Sqm



Michelle Cottington

Principal - Michelle Cottington Property

M: 0413 552 519

E: michelle.cottington@smileelite.com

Estimated Rent

\$550-\$600 p/w

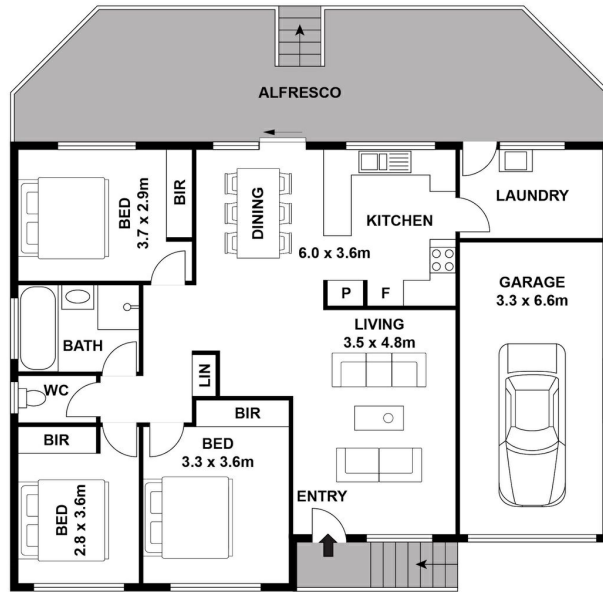


Michelle Cottington

Principal - Michelle Cottington Property

M: 0413 552 519

E: michelle.cottington@smileelite.com



Scale in metres. Dimensions are approximate. All information contained herein is gathered from sources we believe to be reliable, however we cannot guarantee its accuracy and interested persons should rely on their own enquiries.