

### 5 Abeona Parade, Madora Bay FOR SALE

#### Expansive Breathtaking Oceanfront Views

Perched majestically on a generous 900sqm block, this expansive double-storey home offers breathtaking oceanfront views stretching from Mandurah to Rockingham. With four bedrooms, it provides ample space for comfortable living. Step onto the rear balcony to greet the sunrise or unwind on the front balcony while marvelling at the stunning sunsets over Madora Bay Beach.

Rarely found, this property epitomizes coastal luxury and tranquillity, inviting you to embrace the serene beauty of its surroundings.

#### Features included:

- Four large bedrooms
- Front and rear balcony
- Future lift capacity to the first floor
- 3.8kw solar panels
- Expansive 900sqm block
- Large kitchen with ocean views
- Generous-sized master retreat with ocean views
- Ideal dual living residence
- Bore reticulation

Nestled within its well-stocked garden, this coastal retreat boasts an array of native plants and trees, that harmonise effortlessly with the natural landscape. From vibrant flowering shrubs to graceful trees, the garden offers a sanctuary for local wildlife while enhancing the property's eco-friendly allure. Immerse yourself in the sights and scents of native flora, creating a serene oasis where the beauty of the ocean meets the splendour of indigenous plant life.

This truly is a special home and there is every chance the fortunate new owner could secure this home for below replacement value. If you have been searching for a stunningly appointed beachfront home, with accommodation for all but the largest of families, then this property must be on your shopping list.

#### Features

2 Living Areas



**Denise Lewis**

Principal - Lewis Holloway Property

**M:** 0412 877 613

**E:** [denise.lewis@smileelite.com](mailto:denise.lewis@smileelite.com)



**Jan Holloway**

Principal - Lewis Holloway Property

**M:** 0499 955 442

**E:** [jan.holloway@smileelite.com](mailto:jan.holloway@smileelite.com)

**Land size**

900.00 Sqm



**Denise Lewis**

Principal - Lewis Holloway Property

**M:** 0412 877 613

**E:** [denise.lewis@smileelite.com](mailto:denise.lewis@smileelite.com)

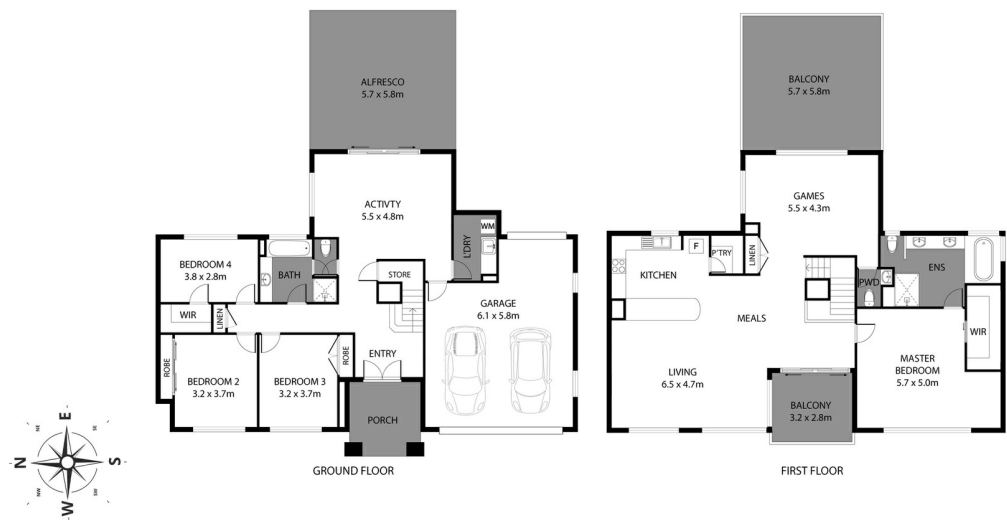


**Jan Holloway**

Principal - Lewis Holloway Property

**M:** 0499 955 442

**E:** [jan.holloway@smileelite.com](mailto:jan.holloway@smileelite.com)



Scale in metres. Dimensions are approximate. All information contained herein is gathered from sources we believe to be reliable, however we cannot guarantee its accuracy and interested persons should rely on their own enquiries.