



25 The Gully Road, Berowra FOR SALE



Sprawling Family Haven

A sprawling family haven capturing breathtaking views of Berowra Valley National Park atop 882 sqm, this versatile home reveals a split-level layout designed to enhance every aspect of daily life. From relaxing in the open plan living/dining zone together to cooking in the gourmet island kitchen or entertaining guests on the huge covered deck that overlooks the sun-drenched pool, it truly caters to a relaxed family lifestyle.

All bedrooms are appointed with built-ins and positioned to maximise privacy including the secluded ground floor parents' retreat that features a walk-in robe, ensuite and patio. Additional highlights such as a media room, home office and guest suite add further appeal.

Located to enjoy a convenient village lifestyle, the property is within walking distance to Berowra Station, Berowra Public School and parks, while moments to the shopping village, cafes and restaurants.

- Move-in ready opportunity with the potential to add value
- Light-filled interiors showcase high cathedral ceilings
- Family-sized bathroom appointed with large spa bath
- Plantation shutters, air conditioning, ceiling fans
- Ample loft storage plus double lock-up garage
- Scope to Airbnb ground floor accommodation

Contact us today and make this home yours.

Features

- Solar Panels
- 3 Toilets
- Built-In Robes
- Dishwasher
- 1 Ensuite
- 2 Living Areas
- Study

Land size



Francesca Parrino

Principal - Francesca Parrino Property

M: 0415 651 740

E: francesca.parrino@smileelite.com



Julia Ferreira

Sales Associate - Francesca Parrino

Property

M: 0448 069 199

E: julia.ferreira@smileelite.com

Open

20th Jul 2024 @ 11:00AM - 11:30AM

882.00 Sqm



Francesca Parrino

Principal - Francesca Parrino Property

M: 0415 651 740

E: francesca.parrino@smileelite.com



Julia Ferreira

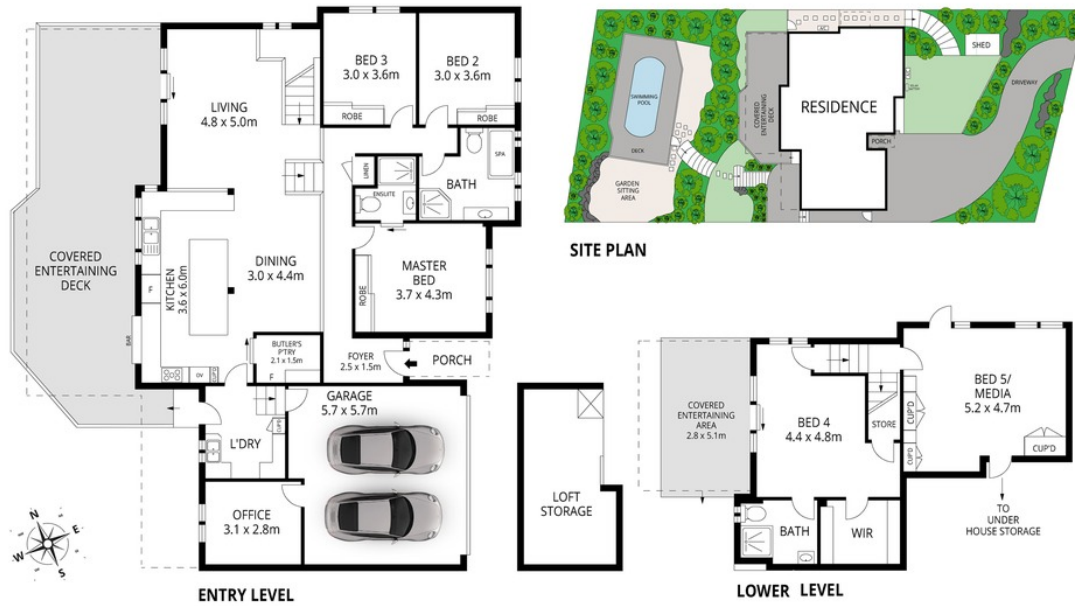
Sales Associate - Francesca Parrino Property

M: 0448 069 199

E: julia.ferreira@smileelite.com

Open

20th Jul 2024 @ 11:00AM - 11:30AM



Scale in metres. Dimensions are approximate. All information contained herein is gathered from sources we believe to be reliable, however we cannot guarantee its accuracy and interested persons should rely on their own enquiries.