



## 59 Donnellys Ridge Road, Moruya FOR SALE



### Your Peaceful Lifestyle Awaits

Live a relaxed, carefree lifestyle at this wonderful rural retreat seemingly miles from anywhere but just minutes from Moruya CBD. Delightfully private and radiating charm and character, this generous three-bedroom home is set on 5 acres of gently rolling, green countryside. This authentic gem delivers space, seclusion and tranquillity and is perfect for families, hobby farmers, horse lovers or city escapes as an idyllic change of lifestyle.

When entering the acreage you are greeted with a lovely entrance that leads you to this hidden and humble abode with expansive acreage views.

There is a selection of generous living areas which offer ample space and versatility to create extra bedrooms for a growing family. The open living and dining area is warmed by a grand fireplace and a large family or rumpus room with a bar.

The home consists of three bedrooms, including the master with its own ensuite and walk-in robe boasting country views from the private veranda.

The property also includes a substantial studio equipped with a bathroom, that could be used for an office or art studio, sewing room, or kids retreat.

#### Other inclusions;

- Double garage with workshed
- Extensive paddocks, shedding and fencing – perfect for horses
- Pretty, easy-to-maintain garden with established hedges and trees

Promising a leafy and enviable lifestyle of contentment, privacy and freedom, this peaceful, country estate is far enough away from the busyness of life but just on the edge of town, what are you waiting for this large home is just begging for new owners to make it their own. Call me today to arrange your inspection.

#### Features

- Grey Water System
- 2 Toilets
- Built-In Robes
- Dishwasher



**Michelle Cottington**

Principal - Michelle Cottington Property

**M:** 0413 552 519

**E:** michelle.cottington@smileelite.com

1 Ensuite  
2 Living Areas  
Open Fireplace  
Rumpus Room  
1 Carport  
Deck  
Fully Fenced  
Secure Parking  
Shed  
Reverse Cycle A/C

**Land size**

5.00 Ac

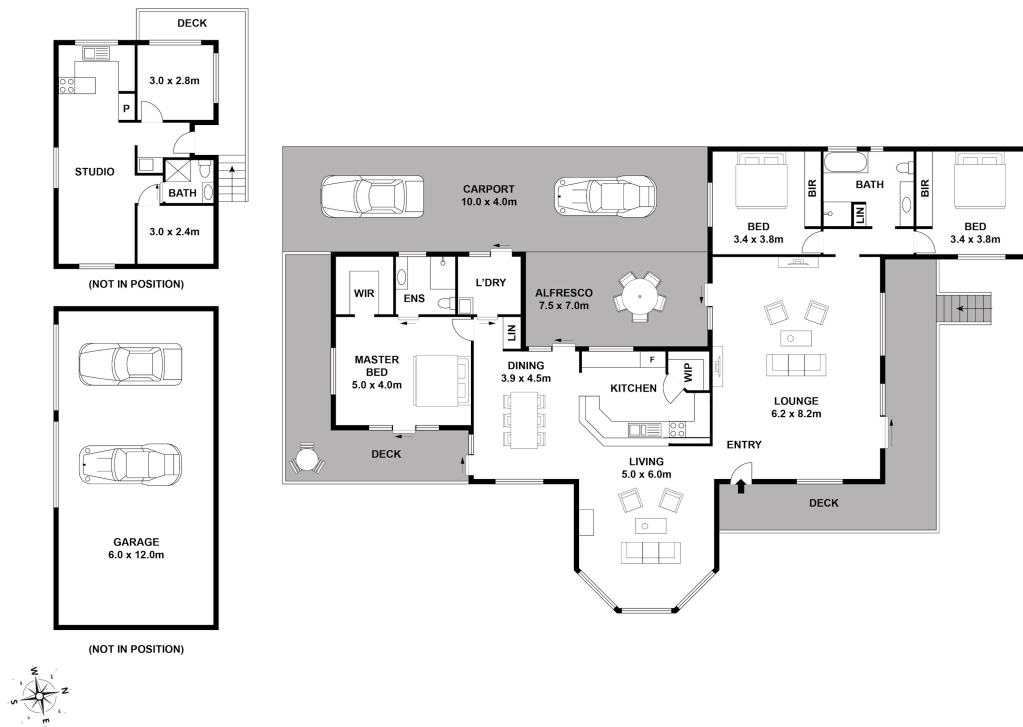


**Michelle Cottington**

Principal - Michelle Cottington Property

**M:** 0413 552 519

**E:** michelle.cottington@smileelite.com



Scale in metres. Dimensions are approximate. All information contained herein is gathered from sources we believe to be reliable, however we cannot guarantee its accuracy and interested persons should rely on their own enquiries.