



11 Leece Road, Uralla FOR SALE



Comfort and Sustainability

Discover the perfect blend of comfort and sustainability in this beautiful brick home, nestled on a generous 1445m² block in a serene, private location of Uralla. Featuring three spacious bedrooms, a dedicated study, and a contemporary bathroom plus an ensuite, this home is designed for both relaxation and productivity.

Energy efficiency is at the forefront with installed solar panels, ensuring reduced utility costs and a smaller carbon footprint. The property includes a double garage and an additional large double shed at the rear, providing ample space for vehicles and storage.

Experience the peace of mind that comes with living in a quiet, secluded area, while still enjoying easy access to local amenities. Whether you're a growing family, a professional working from home, or someone looking for that perfect lifestyle balance, 11 Leece Road offers an exceptional living experience. Don't miss out on this unique opportunity to own your dream home.

Disclaimer: All information contained herein is obtained from property owners or third-party sources which we believe are reliable. We have no reason to doubt its accuracy, however we cannot guarantee it. All interested person/s should rely on their own enquiries.

Features

2 Living Areas

Land size

1,445.00 Sqm



Nathan Whitton

Principal – Nathan Whitton Property

M: 0435 252 908

E: nathan.whitton@smileelite.com



Bek McFarlane

Sales Associate - Nathan Whitton Property

M: 0432 122 421

E: bek.mcfarlane@smileelite.com



Nathan Whitton

Principal – Nathan Whitton Property

M: 0435 252 908

E: nathan.whitton@smileelite.com



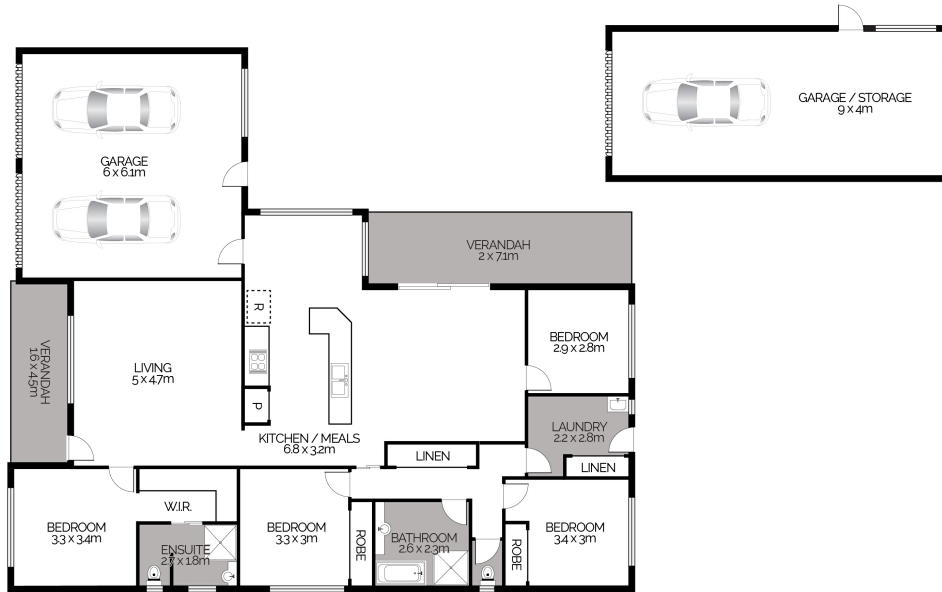
Bek McFarlane

Sales Associate - Nathan Whitton Property

M: 0432 122 421

E: bek.mcfarlane@smileelite.com

11 Leece Road, URALLA



This floor plan is intended as a guide only. Layout dimensions are approximate only. No representations or warranties of any nature whatsoever are given or intended. Any person using this information should rely on their own enquiries. Floor Plans by JP Media.



Scale in metres. Dimensions are approximate. All information contained herein is gathered from sources we believe to be reliable, however we cannot guarantee its accuracy and interested persons should rely on their own enquiries.