



2009 Sofala Road, Peel FOR SALE



Countryside Retreat

Located in the tightly held village of Peel, just a pleasant 15-minute country drive from the centre of town, this property presents a terrific opportunity to enjoy the benefits of picturesque rural living, all within an easy commute to town.

Property Features include:

- Three generous bedrooms, two with large built-in wardrobes and an open plan kitchen, dining and living with a cozy wood burner and ceiling fans
- A stylish, newly refurbished kitchen, renovated family bathroom with separate toilet, a refreshed internal laundry, attractive vinyl floors, with carpet in bedrooms, quality window coverings and a charming, covered verandas that enjoy a sunny aspect and peaceful outlook
- A fantastic cost saving 6 kw solar system and 9.8 kw battery, with the grid connected, convenient concrete driveway, double garage as well as a double carport
- A 20 foot shipping container, terrific useable land featuring retained gardens, an enclosed chook yard, raised veggie beds, established trees, separate, fully fenced horse yard, near new water pressure pump purchased this year, great water storage with 2x 22,500l water tanks and separate garden tank, large dam that enhances the outdoor ambience, solar hot water, recently upgraded Colorbond roof, upgraded power board with safety switches, school bus available from the front gate, excellent privacy, with no visible neighbours, good wireless internet from NBN tower, ideal for working from home, all set on 1.05HA approx. ten mins drive to Trinity Heights shopping centre

Features

Water Tank
1 Toilet
Built-In Robes
Dishwasher
1 Living Area
Open Fireplace
Outside Entertaining Area
Remote Garage Door

Land size

1.05 Ha



Jay Cleary

Principal - Cleary Fairbrother Property

M: 0439 891 872

E: jay.cleary@smileelite.com



Sandy Fairbrother

Principal - Cleary Fairbrother Property

M: 0438 436 161

E: sandy.fairbrother@smileelite.com

Council rates

\$252 per qtr



Jay Cleary

Principal - Cleary Fairbrother Property

M: 0439 891 872

E: jay.cleary@smileelite.com

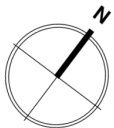
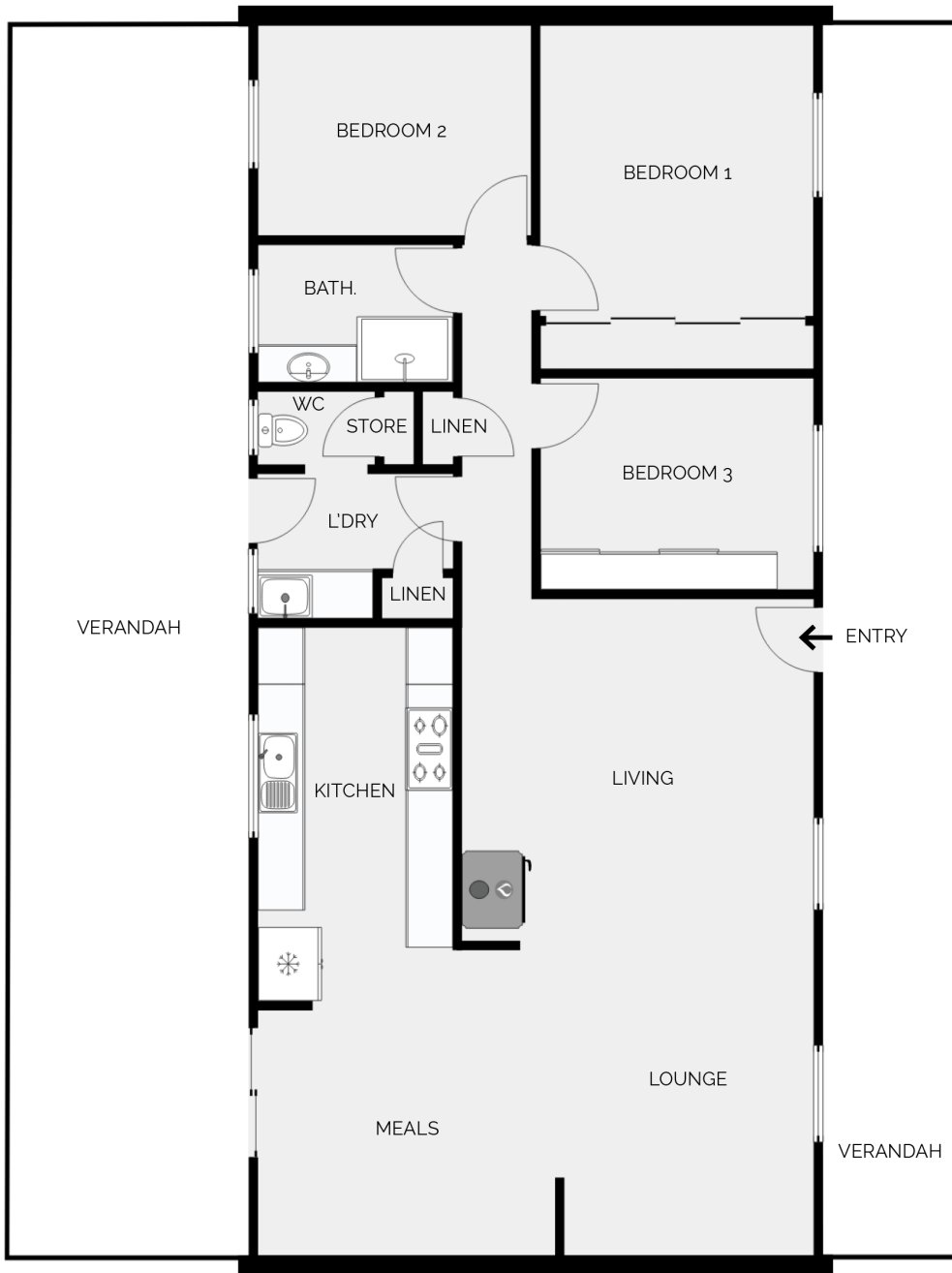


Sandy Fairbrother

Principal - Cleary Fairbrother Property

M: 0438 436 161

E: sandy.fairbrother@smileelite.com



Scale in metres. Dimensions are approximate. All information contained herein is gathered from sources we believe to be reliable, however we cannot guarantee its accuracy and interested persons should rely on their own enquiries.